

TAMBO RAMBLER

Bruthen and District Newspaper
Produced by Bruthen and District Citizens Association

December 2025

NUMBER 314



GIPPSLAND
Community
Foundation

GCF proudly
supports the Tambo
Rambler
Community Paper

The Tambo Rambler is proudly sponsored this month by Shoreside Real Estate Lakes Entrance

The Tambo Rambler would like to acknowledge the Gunai Kurnai People, the Traditional Owners of the land on which we gather, and pay our respects to their Elders both past, present and emerging.



Meet The Team



03 5155 3133

1/521 Esplanade, Lakes Entrance VIC 3909

shoresidere.com.au

admin@shoresidere.com.au

Bruthen and District Neighbourhood House's Annual Community Carols Christmas Party!

On a warm summers evening, Friday, December 5th, our Community descended upon the beautiful main street gardens of Bruthen, we came together to celebrate the magic of Christmas at the Bruthen and District Neighbourhood House's (BDNH) Annual Community Carols Christmas Party. The event, which drew approximately 250 attendees of all ages was a vibrant celebration of community spirit, featuring performances, yummy food, and a special visit from Santa Claus.

The night shone brightly, thanks to the courageous performances of multiple locals, amongst these acts were Brent and Auntie Di, who took to the stage during open mic slots. Their heartfelt and uplifting energy captivated the crowd, earning them the title of two of the "brightest stars" of the night. Their bravery and talent added so much warmth and magic, created by everyday heroes with a passion. Thank-you so much for sharing your talent.

Added carols highlights included the dazzling performance by the "little legends" of Tambo Upper Primary School and surrounding areas. The young performers dazzled with their singing voices, jingle bell choreography, and festive dance moves, leaving the audience in awe. We would like to thank parents and teachers for their support in preparing for the show and showcasing the true spirit of community.

As the night progressed, festivities continued with carol singing, mouthwatering sausages (snags) from the BBQ, drinks, popcorn, fairy floss, and a lively raffle. The night reached its pinnacle with the arrival

of Bruthen Santa, who charmed over 100 children by hearing their Christmas wishes, handing out lolly bags, and posing for photos. The local Bruthen CFA (Country Fire Authority) assisted Santa's journey to the event, ensuring a safe arrival and departure while his reindeer rest up for the big run on December 24th.

The success of the event would not have been possible without the tireless efforts of our valued volunteers, Santa himself and all the generous donors who contributed to setup, food stalls, raffles, and clean-up. BDNH extended heartfelt thanks to all who helped, emphasising that the community's generosity and teamwork are the true magic behind anything we achieve. We are always blown away by just how truly generous and kind you all are!

The BDNH family wishes everyone a Merry Christmas and a safe and prosperous new year. Here's to celebrating the bonds that make our neighbourhood shine. The Bruthen and District Neighbourhood House remains a cornerstone of community engagement in the region, and this event was a testament to the power of community spirit.

If you missed out on the fun, don't worry!

You can stay up to date with upcoming events by visiting the BDNH or following our social media page.

The BDNH family would like to thank the community for their support throughout 2025 and wishes you a joyous holiday season, filled with love, laughter, and all the things that bring you joy. Merry Christmas from our Mob to Yours!

Nikki W



Bruthen General Store Amendment to Trading Hours

Due to a sharp decline in evening trade, The Bruthen General Store will begin closing at 6pm every night, effective Monday, December 15, 2025.

This decision has not been an easy one as they have already amended their hours of trade this year. However, the ever increasing costs of running a business, combined with the decline in foot traffic has meant that hours of trade must be decreased.

They are aware this may cause an inconvenience to some customers and they sincerely apologise for this.

Welcome to the new owners at the Bruthen Local Post Office

The Bruthen Local Post Office, always a cheerful hub of local activity, welcomed new owners/operators Kelsey and Nathan Schueler in November. Well known in the local community, both Kelsey and Nathan are experienced 'posties'. Kelsey grew up locally and was introduced to postie tasks at a young age, accompanying her mum on district mail deliveries from 5 years of age. The Schueler family bought the Bruthen district mail contract in 2020, with Nathan doing the Buchan delivery round and following up with the Bruthen mail delivery on his bike since 2021, a familiar sight around the streets in the early mornings. Kelsey and Nathan have four young daughters: Maddi, Penny, Libby and Berni who like to help in the PO and are keen cyclists like their dad. The family have two cats, Tux and Max who are also settling into their new PO home base.

Bruthen LPO is open Monday – Friday in business hours 9am – 5pm and offers an extended service for parcel collection between 7am-8.30am.

Customers who cannot attend in usual business hours can collect parcels at the side door which has a bell to alert staff someone is there for mail collection.





DANIEL CALABRO New Homes - Renovations - Extensions

Mob. 0407 524 256 calabrobuiders@aussiebb.com.au 

Specialising in new home builds – extensions – renovations – bathrooms – pergolas & decks.

Registered with over 35 years of experience – your local & trusted builder.

Obligation free quote – call Daniel on 0407 524 256.

Art & Information Centre Update



More volunteers coming.

A recent volunteer recruiting drive was successful in attracting more volunteers, which means more days that the Centre can be open. Watch out for the flags. If fluttering out the front we are open, come in and say hello.

Shopping for Christmas?

When looking for treasures to give to family and friends this Christmas don't forget to check out the Art and Information Centre. The Centre management group concentrate on stocking local, handmade gift items ranging in price from \$4 to \$600. From knits to barbed wire, eco-dyed table runners to handmade cards, mosaic Bee water bowls to paintings by local artists there are lots of choices.

Choose from cute little paintings, fragrant smelling soaps, earrings, necklaces, tiny art books, wooden bowls, mounted fossils and walking sticks. Or you might be buying for a reader in which case we stock a range of books by regional authors and poets which have been popular.

Our Challenge to You This Summer.

Explore some of Bruthen's history.

1. If you have not stepped inside the Art and information Centre why not make it a goal this summer. Bring your guests along to check out the 3 Heritage buildings. Start with the Art and Information Centre, which at over 120 years is oldest the oldest wooden shop in Bruthen. Restored to suit it's current purpose, while retaining the original character of the building, it is well worth a look.
2. Visit the Fettle's Hut, see the old photos and read the stories about our history from pre-European settlement days to the arrival of automobiles.
3. Step into the Police Lock-up to get a sense of what it must have felt like to spend a day in the prison. Delivered to Bruthen in the mid 19th century as a flat pack of pieces labelled with roman numerals, which are still visible, this is an interesting little building from which there was no escape.

Creatives – think of Bruthen Arts and Information Centre.

There is room on our walls and display shelves for more, so if that sounds like you please get in touch. Email: bruthenartandinfo@aussiebroadband.com.au

Bruthen Arts and Events Council Inc group : Finally up and going!

It has been so exciting to finally have a home and to be welcoming creatives of various genres to Art Collective sessions every Friday Evening this term. Some people are learning new skills, mentored by more experienced artists, while some are bringing their current projects along to work on and others just drop in for a chat with like minded people.

The first four week beginners course began on November 19th with a keen group of 10 people learning about Water Colour Painting. It is hoped to run at least one course in various mediums and skill levels each term. There have been lots of ideas put forward so watch out for more information on our Facebook page, in the Rambler or on notice boards. Drop in and see what we are doing.

Fridays at 5pm during school terms, at the rear of the Community Health Building in Main Street.

Membership of \$15 (\$10 concession), which includes membership of the Arts and Events Council Inc. \$2 per session to cover incidentals and room use.

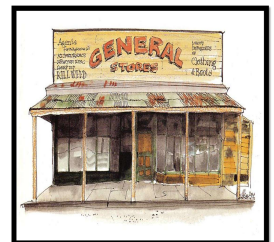
Contact: bruthenartcollective@gmail.com



**54 Main Street,
Bruthen.**

Open 7 days

Ph: 03-51575 415



- Supplier of groceries, fresh fruit & vegies, hardware, fishing supplies and basic newsagency.
 - Beer, wine, RTD cans and ice.
 - Swap & Go BBQ Gas bottles.
- Shop local – support local employment**
email: BruthenGeneralStore@gmail.com

Old Views of East Gippsland: A Calendar To Keep



The fascinating photos shown here come from the recently printed 2026 calendar 'Old Views of East Gippsland', compiled by the extraordinarily accomplished and highly productive local historian Debra Squires.

It features a great variety of photographs from Ensay, Orbost, Lakes Entrance, Bairnsdale, Cobbannah, Paynesville and Deptford as well as Bruthen.

Deb grew up in the Mallee, and moved to Omeo in 1971, to Bruthen in 1975 and later to Bairnsdale. She is editor of the Black Sheep, the combined newsletter of the East Gippsland Family History Group and East Gippsland Historical Society. She also edits The Standard, the newsletter of the Omeo

Historical Society which is a member of the Heritage Network East Gippsland. For anyone interested in regional history these publications offer a diverse range of articles and pictures for a small subscription fee.

The calendar is now available at the Bruthen General Store, as well as a number of other outlets including Schoolworks and The Book Orchard in Bairnsdale.

Our thanks to Deb for the use of these photographs.

Above: View from the verandah of the Bruthen Inn, 1888. **Below:** This photo, taken in 1905, shows two ladies driving their horse and buggy from the east toward Bruthen via the Tambo River bridge.



Sarsfield Hall build making impressive progress

The long-awaited Sarsfield Hall is taking shape, marking an exciting milestone for the local community. After years of determination and effort, the people of Sarsfield have seen their hard work pay off as construction continues to advance steadily.

Local company Brooker Builders has been hard at work since June, delivering high-quality craftsmanship and keeping the project on track. In recent weeks, the hall has reached several key milestones: the doors and windows are in place, brickwork is complete, the roof is on, and internal works such as plastering are now underway.

If construction continues at its current pace, the community can look forward to the official opening of the new Sarsfield Hall in April 2026. The finished facility promises to become a vibrant hub for events, gatherings, and local activities for many years to come.





**Anglican Parish of Tambo
Bruthen and Swan Reach
2025 Christmas Services**

Friday, 19 December 2025

6:30 pm - Lessons and Carols, St Matthew's, Bruthen

Wednesday 24 December (Christmas Eve)

7:00 pm – Eucharist, St Matthew's Bruthen

10:30 pm – Midnight Mass, St Matthew's Bruthen

Thursday 25 December (Christmas Day)

10:00 am – Eucharist, St Columb's, Swan Reach

For further information contact:

Reverend Brian Norris: 0418 633 446

Why drive to Bairnsdale?

We'd love you to join us!



Bruthen Inn Hotel



Kitchen is open 7 days

Lunch 12-2pm (excl. Tues) Dinner 6-8pm

Tuesdays open from 5pm

Friday night raffles supporting local sporting clubs—10 draws.

Catering for private functions and community meetings

Courtesy bus operates Wed, Fri, Sat nights only

For enquires or bookings contact Bruthen Inn Hotel.

Cheers and beers, Stretch

Phone (03) 51575201

Air Force Toys

A load of toys was delivered to the Bruthen Neighbourhood "warehouse" on December 3 by St Matthew's Church who had received the toys from the RAAF Base at East Sale. The toys had been collected by Lockheed Martin Company staff at the base. The company is supported in this activity by RAAF personnel generally.

The toys were presented by the Rev'd Brian Norris and Kerrie Schmidt of St Matthew's Church to Nikki, Martyne and Cheryl of the Neighbourhood House. It is expected that a similar delivery will be made next year around Christmas time.

Christmas gathering

Rev Brian Norris busy at the BBQ put on to thank all the Volunteers who work in the Op Shop .





Darren Chester

Putting Locals First

#lovegippsland



100% AUTHENTIC
GIPPSLANDER
GIPPSLANDER COUNTRY
MARTINDALE - WELLINGTON - EAST GIPPSLAND

iNATIONALS for Gippsland

www.darrenchester.com.au

Authorised by Darren Chester MP, Member of Parliament for Gippsland South, Victoria



Students begin exploring the Great Outdoors

Bruthen Primary School's Grade 5 and 6 students recently enjoyed an unforgettable Outdoor Education Camp at Buchan, packed with hands-on experiences that strengthened resilience, teamwork, determination, and a lifelong appreciation for the outdoors.

Across four nights and five days, students tackled a range of exciting challenges, from rafting down the Tambo River and surfing at Cape Conran to exploring the depths of Wilsons Cave near Buchan, and trying their luck at fishing. Each activity encouraged problem-solving, co-operation, and the confidence to step outside their comfort zones.

Students also developed practical outdoor living skills, including setting up tents, cooking over an open fire, and spending technology-free time exploring local creeks. Evenings were spent sharing and reading their own campfire stories, adding creativity, connection, and plenty of laughter to the experience. In addition, students learned vital safety skills such as DRSABC and basic first aid for snake bites, building their capacity to stay safe in the outdoors.

This camp was made possible through the generous support of Alyson, Paul, Michael and Sam from the Bruthen Recreation Organisation, whose assistance in planning and running activities was invaluable. Warm thanks also go to Bruthen Primary staff Susie Grinter, Katrina Hersey and Michelle Young, for providing this rich and memorable learning opportunity.

The 2025 Outdoor Education Camp was far more than a school trip, it was a week of growth, challenge, friendship, and memories that students will carry with them for years to come.



Bruthen Discount Pharmacy

Caring for Our Local Community

Prescriptions • Health Checks •
MedsCheck • NDSS Webster
Packs • Vaccinations & Injection
Services • Health & Beauty
Ranges • Local Delivery

Mon–Fri: 8:30am–5pm | Sat: 9am–12pm

60 Main Street, Bruthen Ph: 5157 5224

Email: bruthenpharmacy@outlook.com

Bruthen Primary School Graduation Class of 2025

Jack Bittner: As Jack completes his primary school journey, we celebrate the mature, thoughtful and hands-on learner he has become. Throughout his time at Bruthen Primary School, Jack has developed a clear understanding of both his strengths and the areas he wants to continue growing. He loves learning through doing and always engages deeply when tasks connect to real-life situations.

Jack is at his best when working with his hands. Whether he's fixing things, taking on those "get your hands dirty" jobs, or eagerly volunteering to help with gardening or repairs around the school, Jack tackles every task with enthusiasm and pride. His interests span across Science and Physical Education, and he brings a wonderfully creative flair to his Art work.

Looking ahead, Jack aspires to be a harvesting farmer, combining his practical skills, love of working outdoors, and problem-solving abilities in a rewarding and hands-on career.

We wish Jack all the very best as he begins his new learning journey at Secondary School. We know he will shine in whatever path he chooses and continue to impress others with his determination, creativity and willingness to give everything his best effort. To give things a go.



Pippa Callow: As Pippa completes her primary school journey, we celebrate the dedicated, self-aware and motivated learner she has become. Throughout her time at Bruthen Primary School, Pippa has developed a clear understanding of how she learns best and the behaviours that allow her to take true agency over her learning. She consistently activates these qualities, demonstrating persistence, determination and a positive mindset when approaching new challenges.

Pippa loves to learn with others and brings enthusiasm, energy and teamwork to every classroom setting. Whether working in Reading, Writing, Mathematics, Art, Science or PE, she actively engages and contributes, making the learning experience richer for everyone around her.

Looking ahead, Pippa aspires to be a teacher, sharing her love of learning and inspiring others just as she has been inspired. Her strong sense of self as a learner ensures she is well-placed to pursue this path with confidence.

We wish Pippa all the very best as she begins her new learning journey at Secondary School. With her determination, collaborative spirit and thoughtful approach to learning, we know she will continue to shine in everything she does.



Marlowe Columbus: This year, Marlowe has truly discovered a love for learning. His curiosity, deep thinking and thoughtful questions lead him into rich explorations and inspire those around him. An avid reader, he is especially drawn to fantasy realms, which also influence his imaginative and detailed writing. Marlowe has a natural flair for performance and has taken on several lead roles in our school productions. This year, he shone as the "vegan-friendly dragon," delighting the audience with his humour and confidence on stage.

Marlowe aspires to work in the field of science, either as a scientist or biologist, where he can explore, investigate and make new discoveries about the world around him.

We wish Marlowe all the very best as he begins his new learning journey at Secondary School. With his curiosity, creativity and determination, we know he will continue to thrive and make a difference.

Noah Cooke: Noah brings a quirky sense of humour and a wonderful sense of fun to every classroom he enters. His joyful energy lifts others, and he thrives when learning through conversation, sharing ideas and exploring new understandings with his peers.

Noah has a strong Mathematical mind and quickly picks up new concepts. He enjoys learning through games and loves using technology to represent his thinking and deepen his understanding.

His creativity and problem-solving skills shine when he is experimenting, building or exploring digital tools. Looking ahead, Noah aspires to be a YouTube creator or an engineer, combining his imagination, tech-savvy skills and love of problem-solving to build and create in exciting ways.

We wish Noah all the very best as he begins his new learning journey at Secondary School. With his humour, curiosity and passion for technology, we know he has an exciting future ahead.



Bruthen Primary School
Proudly Presents
"Dragon"

Join us for an enchanting story about a misunderstood dragon and the quest to clear his name.

Date: Tuesday, 16th December 2025

Venue: Bruthen Mechanics Hall

Time: 6:00 pm – 7:00 pm



Everyone is welcome to come along to celebrate the year that was at Bruthen Primary, watch our students shine in this year's production, and honour our graduating Grade 6 students. Don't miss this magical evening!



Lileyarnah Davies: Lileyarnah is a kind and caring student who is always looking out for others. She is a diligent learner who takes great pride in her work, approaching every task with focus and a strong desire to do her best.

Lileyarnah's strengths shine brightest in her creative pursuits. She loves Art and has a particular passion for designing and crafting new outfits and jewellery from recycled materials. Her imagination, attention to detail and creative flair make her work truly unique. Looking to the future, Lileyarnah aspires to be a singer, artist or fashion designer, dreams that beautifully reflect her creativity and expressive spirit.

We wish Lileyarnah all the very best as she begins her new learning journey at Secondary School. With her kindness, creativity and determination, we know she will continue to shine.

Jack Hollier: Jack is a man of few words, but his kind and caring spirit shines through in everything he does. He goes about his day quietly and confidently, always doing things in his own thoughtful way.

Jack's strengths lie in Mathematics, he loves working with numbers, spotting patterns and tackling challenging problems. He also thrives in the great outdoors and enjoys keeping busy using his hands. Outside the classroom, Jack is a social butterfly who enjoys spending time with his mates, especially when shooting hoops and playing basketball at school.

Looking ahead, Jack aspires to become an electrician, building on his love of practical work, his hands-on skills, and his determination.

We wish Jack all the very best as he begins his new learning journey at Secondary School. With his calm confidence and strong sense of self, we know he will thrive in the years ahead.



Taya Jones: Taya has only been with us a short time, but she has fitted in as though she has been here since Prep. She is a diligent learner who consistently puts in her best effort and approaches each task with positivity and determination.

In her time at Bruthen Primary School, Taya has learnt a great deal about herself as a learner. She understands the importance of staying focused, using her time efficiently, and taking responsibility for her learning, skills that will serve her well as she moves into secondary school.

Looking ahead, Taya hopes to pursue a career in teaching, using her passion for learning to guide and encourage others on their own educational journeys.

We wish Taya all the very best as she begins her new learning journey at Secondary School. With her determination, kindness, and strong work ethic, we are confident she will continue to thrive.

Matilda Kennedy: Matilda is a curious, self-regulated and confident agent of her own learning. She loves to share her thinking with others, using discussion to deepen and clarify her understandings while also supporting the learning of those around her. Matilda is highly self-aware and consistently demonstrates empathy, kindness and emotional understanding. She goes out of her way to make sure everyone feels safe, included and valued, a true role model for her peers.

Looking ahead, Matilda aspires to become either a singer or a physiotherapist, two pathways that reflect both her creativity and her desire to help others.

We wish Matilda all the very best as she begins her new learning journey at Secondary School. With her curiosity, empathy and strong sense of responsibility, we know she will continue to shine.



Alice Kermac: Alice is a thoughtful and enthusiastic learner who approaches each day with curiosity and a positive attitude. She listens carefully, asks great questions and always gives her best effort.

Alice works well with others, offering kind support and contributing her ideas with confidence. Her calm, friendly nature helps create a welcoming classroom environment where everyone feels comfortable.

She takes pride in her work and shows persistence when challenges arise, demonstrating responsibility and quiet leadership.

Looking ahead, Alice dreams of becoming a marine biologist, caring for the Great Barrier Reef or protecting the waterways near Geelong, aspirations that reflect her love of nature and her desire to make a positive difference.

We wish Alice all the very best as she begins her new learning journey at Secondary School. With her kindness, determination and love of learning, she is sure to thrive.



Lily Nation: Lily quietly goes about her learning with focus and determination, taking on each task with steady confidence and little fuss. She enjoys being challenged and shows a real passion for both Mathematics and creative writing, especially when crafting her own stories.

Lily is meticulous in tracking her thinking and confidently expresses her ideas, even when her opinions differ from those around her. This thoughtful approach strengthens both her own learning and the learning of others.

Lily aspires to become a vet one day, combining her love of animals with her caring and considerate nature.

We wish Lily all the very best as she begins her new learning journey at Secondary School. With her dedication, curiosity and strong sense of self, we know she will continue to thrive.

Poppy Nation: Poppy highly values her friendships and places great importance on activities that help build and strengthen these connections. She especially enjoys performing gymnastics tricks and handstand competitions with her friends—always shared with plenty of laughter.

Poppy has embraced many lead roles in our school productions, performing with confidence, poise and flair. She brings characters to life with energy and expression, captivating her audience every time she steps on stage.

Poppy looks ahead to Secondary School with a clear sense of who she is and what she hopes to achieve. Her strong belief in herself, along with her determination to pursue her passions, will no doubt guide her toward exciting opportunities in the performing arts and beyond. Wherever her path leads, Poppy's drive and confidence will help her turn her dreams into reality.



Lucy Parker: Lucy has grown enormously in confidence this year and approaches her learning with a strong determination to improve and achieve her goals. She takes responsibility for her learning and shows great resilience, continuing to try even when things don't go as planned at first.

Lucy has also stepped into leading roles in our school productions, showing a newfound confidence and a willingness to express herself in different ways. Her growth in self-belief has been wonderful to see, both on stage and in the classroom. Looking ahead, Lucy aspires to become a Karate Instructor and dreams of one day opening and running her own Karate School, an ambition that reflects her passion, discipline, and commitment to achieving her personal best.

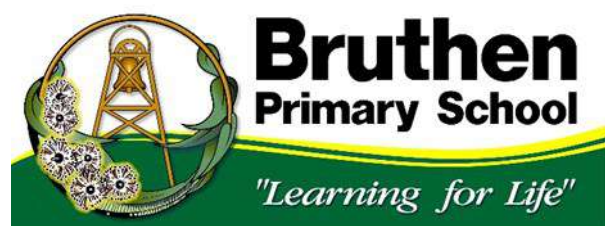
We wish Lucy all the very best as she begins her new learning journey at Secondary School. With her growing confidence and strong work ethic, she is ready for every opportunity ahead.

Lachlan Rogers: Lachie is a quiet achiever who leads by example, showing respect for others and helping make both the classroom and playground safe and welcoming for everyone. His thoughtful approach ensures that all his peers have the opportunity to learn and shine.

Lachie's strengths lie in his photographic memory, which helps him excel in spelling and mathematical thinking. He applies his skills with focus and confidence, quietly achieving great results.

Lachie aspires to be a mechanic, combining his practical skills with his natural curiosity and problem-solving abilities.

We wish Lachie all the very best as he begins his new learning journey at Secondary School. With his dedication, thoughtfulness and strong abilities, he is sure to succeed in whatever path he chooses.



Tambo Upper Grade 6 students

Another year has come and gone and with that comes saying goodbye to our Grade 6 class. With plenty of charisma, humour and energy, they have taken everything in their stride from learning to sporting events and everything in between. Some of their highlights included camp to Canberra with Metung PS, Winter and Summer sports and their Grade 6 Big Day Out at Lakes Entrance. At school, they worked hard, challenged themselves and learnt to be out of their 'comfort zone' showing great

resilience and perseverance. It has been a pleasure to watch them grow into the young men and women they have become, we look forward to celebrating their graduation in the coming weeks. Congratulations to our class of 2025! We wish you all the best for your future years of learning at high school, may all your dreams come true and remember you can always call Tambo Upper PS 'home'.



BRUTHEN INN HOTEL

NEW YEARS EVE
DECEMBER 31ST
8.30PM TIL LATE

BOJANGLES
A BLEND OF COUNTRY & ROCK



For bookings & further enquiries
Contact Jason - 0401 346 283

HALF BROTHERS BOOKING + THE BRUTHEN INN PRESENTS

BLUES INN BRUTHEN

FEB 20TH - FEB 22ND - 2026

SOUTHBOUND SNAKE CHARMERS - SAFARI MOTEL

THE HEAVY KICKS - CONQUEROR ROOT

BRETT WOOD [BAND] - JOSHUA BATTEN

AARON POLLOCK - KATHLEEN HALLORAN [BAND]

THE PIANO WIZARD ANDREW FARRELL

**SCAN
FOR
TICKETS**



**WEEKEND \$135
FRIDAY \$25
SATURDAY \$70
SUNDAY \$55**



Blues Inn Bruthen returns Feb 2026

The excitement is building at our favourite local pub as the line-up for the Blues Inn Bruthen is confirmed. Trading hours over Christmas are as follows, Christmas Day the bar and bottleshop open 11am till 1pm, Boxing Day business as usual, kitchen open and the cricket will be on the TV.

Open Mic will be on Sunday 28th, starting at 2.30pm, all are welcome and it's always a great afternoon. The music is not too loud so you can catch up easily while enjoying the vibes and delicious bar menu all afternoon.

On New Year's Eve, country rock artist Bo Jenkins (see poster) is playing from 8.30pm till late. There's no cover charge, so it's a great way to bring the New Year in. New Year's Day, it's business as usual, the kitchen is open for lunch and dinner. Now the amazing, something for everyone program for the Blues Inn Bruthen Festival on 20-22 February next year.

Safari Motel(Soul Funk Blues big band) and crowd favourites Southern Snake Charmers (Swamp Rock) fire up on Friday night. The George Macfloyd Blues Band plays a free show of raw and honest blues on Saturday afternoon. They were a hit of the 2022 Bruthen Blues Festival and promise a lively afternoon with a twist on classic songs. Gotta love that harmonica and electric piano.

Saturday night kicks off with the Heavy Kicks (Blues Rock), Conqueror Root (dirty Blues, Funk and Soul), then the Brett Wood Band (Aussie grit and Texas Soul) headlining.

A huge afternoon on Sunday opens with Joshua Batten (Roots Rocker). Next up is Aaron Pollack, a finalist in the 2020 International Blues Challenge, who combines singing, songwriting and guitar-picking for his Blues, Country and Folk sound. Then the well-known singer/songwriter Piano Wizard, Andrew Farrell (Australian Blues, Boogie Woogie, jazz) followed by Kathleen Halloran and band to finish the weekend. Stretch has been trying to book Kathleen, a virtuoso singer, songwriter and guitarist for a long time so she's rapt to have secured her and her rockin' band for next year. Ticket prices are similar to last year's. Use the qr code on the posters or Facebook to book tickets. Camping is available through the Bruthen Caravan Park.

Finally, best wishes to everyone for a safe and merry Christmas, and hope you all enjoy spending time with family and friends over the festive period. Thanks also for supporting the pub throughout the year and looking forward to an awesome 2026. Keep safe everyone, cheers and beers from Stretch and the crew at the Bruthen Inn Hotel.

Pamela B

East Gippsland Rail Trail completed

The final 11.46-kilometre section of the East Gippsland Rail Trail between Simpsons Creek and Prestons Road has now been resurfaced and officially opened, completing the upgrade of the full 96-kilometre trail.

Nationals Member for Gippsland East, Tim Bull, said the works were an outstanding achievement for the small volunteer Committee of Management, who delivered the project on time and on budget, an outcome the government could well take notice of.

Mr Bull said the Regional Tourism Investment Fund grant concluded more than \$5.5 million in upgrades to the trail since the Black Summer Bushfires.

"Out of disaster, the committee has renovated an asset that delivers significant economic and social benefits across the region.

"The Committee of Management engaged local contractors, used local materials and kept the funding in our region, which is exactly what we want to see."

Mr Bull said the trail was now in the best condition it had ever been and would continue to grow as a major tourism asset for East Gippsland.

"The East Gippsland Rail Trail draws visitors to our towns, supports local businesses and encourages people to stay longer and explore more of what we

have to offer," he said.

Mr Bull noted the ongoing challenge of maintenance, with East Gippsland Shire Council contributing less than \$600 annually despite the trail requiring a minimum of \$600 per kilometre to maintain to current standards. In comparison, Wellington and Latrobe City Councils contribute a combined \$1,200 per kilometre towards rail trail maintenance.

"With the trail now fully resurfaced, it's vital that we secure the ongoing support needed to protect this investment," Mr Bull said.

He encouraged locals and visitors to get out and enjoy the trail.

"Whether you want to ride the whole trail or just take on a popular section like Bairnsdale to Nicholson, now is the perfect time to experience it."

Left: State Member for Gippsland East, Tim Bull, with East Gippsland Rail Trail Committee of Management at its official opening of the newly upgraded section east of Simpsons Creek.

Pictured L-R: Tim Bull MP, Michael Oxer (former EGRT Chair) and current committee members Frank McShane, Trish Fox, Gaynor Rettino and Al Campbell.

Open Mic returns December 28 at Bruthen Inn

Kye Jones was up first on this stormy, rainy day charming all with her bluesy soulful renditions of crowd favourites Landslide by Stevie Nicks, Mira (an original) and Waterfall by Rory Ellis.

Short Long Way was next with Glen Bury on full drums, Darren Robinson on vocals and lead guitar and Surfie on bass with all indie-flavoured originals by Darren. Wake In Fright, Sandstone Hotel, All Day Every Day, Concorde 2025 and Evaporation. It was great having the drum kit to back up these great songs.

Jesse played acoustic guitar with a powerful voice to match.

First-timer Jaxon Scionti (nephew of Anna) on acoustic did a great set with Knocking On Heaven's Door, Folsom Prison Blues and Kicking Stones by Brad Cox.

Mark McCord and his American friend Maggie started beautifully with "That's The Way" by Gillian Welch, Tom Waits's Come On Up To The House and a blue-grass style What Am I Doing Loving You Again (Dale Ann Bradley). Maggie's voice is strong and commanding, harmonising well with Mark and both guitars were fantastic.

Wazz sang a more Stone Sour version of Chris Isaacs's " Wicked Game" (I Don't Want To Fall In Love Again), followed by Alcohol And Pills (Todd Snyder). Finishing with The Stable Song by Gregory Allen Isakov. His playing and singing confidence grows every month.

Malcolm jauntily played The Beatle's "I Saw Her Standing There", and lulled us with the popular standard "Dream A Little Dream Of Me" and Sweet Baby James by James Taylor.

Az, Wayne and (Uncle) Pete ripped it up with The Fray's How To Save A Life, Save Me , (Jelly Roll) and Something In The Orange (Jack Bryan). Tyson Clague's acoustic set gave us a lovely

version of Rose Of Alabama (Traditional), Whitehouse Road (Tyler Childers) and Menindee by Neil Murray.

Keith from Bairnsdale with his deep baritone and shades of Nick Cave gave us In Your Eyes (Peter Gabriel), What's a Few Men (Hunters & Collectors), and She Loves Me by Tonic.

Sue and son James (who was appearing for the first time) charmed us with Blackbird, Dream A Little Dream Of Me and Yellow by Coldplay.

Wayne's Save Us was a dramatic original, with his typical strong strumming and heartfelt singing, followed by another original. Az singing and Glen Lamperd on cajon then joined him for crowd favourite Pricetag by Jessie J.

Newcomer Carol George (Rap An Gel) sang clearly and beautifully without accompaniment and the room fell silent to savour her lovely, powerful R&B voice so reminiscent of Whitney Houston's especially when she sang I Will Always Love You. A soulful Think On by Leticia Lee and Star of the Show also by Leticia. She so impressed Jay Wagstaff that he immediately asked her if she'd be interested in collaborating.

Metung John sang The Harder They Come as a tribute to Jimmy Cliff who sadly left us that week. A rockin' take on Watching The Detectives by Elvis Costello and a lively version of London Calling by the Clash completed his set, Jay Wagstaff on acoustic, Glen Lamperd on cajon and Pete on bass finished the afternoon. Be Yourself (Audioslave), then a groovy bass-laden take of The Letter by the Box Tops but more known through Joe Cocker's version that I think of as Ticket for an Aeroplane.

The Open Mic is on again at 2pm on December 28. It's a fabulous afternoon of music and conviviality so give it a go. A delicious snack menu is available all afternoon including pizzas, duck spring rolls and Thai fish cakes among the offerings.



Remembrance Day - Lest we forget

As Australians paused at the eleventh hour on the eleventh day of the eleventh month, we united in solemn reflection to honour the men and women who have served our nation in times of war, conflict and peacekeeping.

Remembrance Day is a time to acknowledge the courage, sacrifice and enduring legacy of those who have worn our uniform with pride.

Shadow Minister for Veterans and State MP for Gippsland East, Tim Bull, said Remembrance Day remains one of the most significant dates on our national calendar.

"While it marks the time the guns fell silent on the Western Front to end WWI, it is a day to honour all those who have not only made the ultimate sacrifice, but those who returned home carrying the physical and emotional scars of service," Mr Bull said.

Mr Bull said it is also important to recognise current serving personnel alongside veterans.

"Today's servicemen and women stand ready to protect our freedoms and uphold our values. Their dedication deserves our deepest respect and ongoing support."

"We must ensure that those who have served in any theatre are never forgotten. It's a responsibility we owe to every veteran."

Mr Bull said it was pleasing to see the Bairnsdale Chamber of Commerce and RSL-Sub Branch combine to have commemorative flags flying in the Main Street of Bairnsdale and thanked all for attending their local service.

Lest we forget.

Tiny Town grants open

The Nationals' Member for Gippsland East, Tim Bull, is encouraging local communities to apply for the latest round of the Victorian Government's Tiny Towns Fund.

This fund offers grants ranging from \$5,000 to \$50,000 to support projects that enhance tourism, liveability, and community pride in towns with populations of 5,000 or fewer residents.

Incorporated not-for-profit community organisations can apply and there is a co-contribution required which can be a combination of financial and in-kind support.

Mr Bull emphasised that this is an invaluable opportunity for small communities within the electorate to access grant funding for key local projects.

"These grants have already made a positive impact on various community-driven initiatives, and I'm eager to see more proposals from the Gippsland East electorate this year," Mr Bull said.

"This is a wonderful opportunity for our towns to secure funding that can make a real difference in their communities."

For more information go to www.rdv.vic.gov.au/grants/tiny-towns-fund.

BRUTHEN ANGLICAN OP SHOP VOLUNTARY POSITION AVAILABLE OP SHOP CO-ORDINATOR

The Anglican Parish of Tambo is seeking a volunteer to take on this important position.

Duties include managing all aspects of the op shop activities including recruitment and rostering of voluntary staff, presentation of goods, the safety of staff and customers and reporting to parish council on shop operations.

Enquiries may be directed to the Rev'd Brian Norris on 0418 633 446.

Applications may be sent to the Rev'd Brian Norris at PO Box 29, Bruthen 3885 or by email to briannorris1@bigpond.com. Please provide details of relevant experience and contact details.

**Nominate
someone great
2026**

**EAST GIPPSLAND SHIRE COUNCIL
AUSTRALIA DAY AWARDS**

This is your opportunity to nominate someone who makes an important contribution to our local community or a community group that's held an outstanding event that deserves recognition. Award categories are:

- **Citizen of the Year**
- **Young Citizen of the Year**
- **Community Event of the Year**

A copy of the nomination form can be found on our website or at any of our Service Centres.

NOMINATIONS CLOSE SUNDAY 7 DECEMBER 2025

For enquiries call 5153 9500
or email civicevents@egipps.vic.gov.au


Scan the
QR Code


Australia Day
Respect. Respect. Celebrate.


EAST GIPPSLAND
SHIRE COUNCIL

**DO YOU HAVE
DEVELOPMENT IDEAS?**

TALK TO THE TEAM AT DSV!

Our team is highly experienced, passionate and ready to help you make your project dreams a reality, from concept development to completion.

Call us today for all your planning needs.



admin@dsvc.vic.com.au | 45 Bailey Street, Barmah | 03 5152 4858

**DEVELOPMENT
SOLUTIONS**

Bruthen - Bairnsdale Bus Timetable Dysons Bus Lines Ph: 5152 1711

Bruthen to Bairnsdale Morning	Monday & Friday AM	Tues, Wed, Thurs AM
Bruthen (opp) General Store	08:10 am	09:50 am
Bairnsdale, Corner Main & Bailey St	08:30 am	10:20 am
Bairnsdale Train Station	08:35 am	10:30 am
Bairnsdale to Bruthen Afternoon	Mon to Thurs PM	Friday PM
Bairnsdale Train Station	1:25 pm	3:40 pm
Corner Chemist (Service & Main Street)	1:30 pm	3:45 pm
Bruthen, Station & Great Alpine Rd	2:00 pm	4:15 pm

EAST GIPPSLAND
SHIRE LIBRARIES

Mobile Service Centre / Library Bruthen (Main St)



What can you do at this mobile service centre?

- Borrow books, CD's, DVD's, audio books and more.
- Pick up a Council newsletter and subscribe
- Lodge a report or request
- Pay an account / make electronic payments
- Make enquiries, collect and lodge application forms
- Register your dogs and cats
- Access and complete surveys
- Learn about and provide feedback on projects in your community
- Use a computer with free internet access
- Have a chat and much more

**Wednesdays
Fortnightly
11.15am - 12.30pm
Fortnightly**

Jan 7th & 21st
Feb 4th & 18th
Mar 4th & 18th
Apr 1st, 15th & 29th
May 13th & 27th
Jun 10th & 24th

Phone 5153 9500 with
any queries about
the service.

Libraries
Change Lives



GLCH

Services @ Bruthen

GP Clinic

- Available Wednesdays by appointment only.
- Ensure your appointment is scheduled in Bruthen.

Community Health Nurse

- Available Mondays and Wednesdays.
- Fees apply, but no one will be denied service due to inability to pay.

Maternal & Child Health

- Available once a month on a Tuesday by appointment only.

Pathology Collection

- Open Mondays and Wednesdays, 8:30 AM to 11:00 AM.
- Nurse fees apply.

Room & Bus Hire

- Available for bookings.

Booking and Contact Information

Call 5155 8300

- For GP Clinic and Community Health Nurse appointments, select Option 1.
- For Room and Bus Hire, speak with our Customer Service team.

Learn More

- Visit: glch.org.au
- Follow us on social media!



Tim BULL MP

MEMBER FOR GIPPSLAND EAST

*Servicing Bruthen and
district community.*



143 Main Street, Bairnsdale VIC 3875
03 5152 3491
tim.bull@parliament.vic.gov.au

Funded from Parliamentary Budget



Bruthen Licensed Post Office

Photocopying
Scanning /
Emailing
Documents



(Est.1893)

Fax
Service

Bill payments, Banking deposits & withdrawals, Western Union, Stationery, Wrapping Paper, Gift & Greeting Cards, PostPak & Australia Post Postal Services.

Nathan & Kelsey Schueler Phone/Fax (03) 5157 5209

END OF YEAR THANKYOU

Bruthen Arts and Events Council members are looking forward to a rest over January and time to re-energise in preparation for 2026, which is promising to be another full year of activities. Nothing that we do happens without a lot of work in the background and I would like to thank our committee members and the team of wonderful volunteers who put in so much to bring art and cultural events to Bruthen for all to enjoy.

Make sure you all watch out for our program of events for 2026 and please support us by coming along.

Joy Manley
President

AED



IN AN EMERGENCY

AED



Bruthen has Heart Start Defibrillators

Located at:

Bruthen Bowls Club:

On the Veranda. Accessible 24/7 (under video surveillance)

Bruthen General Store:

7 days a week during business hours

Bruthen Recreation Reserve:

For Sport Events / Caravan Park.

Bruthen & District Neighbourhood House:

During business hours.

Bruthen Fire Brigade:

On responding appliances and in the station.

Mossface Hall:

On the front veranda.

AED



AED



TRADES AND SERVICES

Bruthen Garden Supplies

NOW OFFERING WATER CARTAGE

• 13,000L WATER CARTAGE.

• DOMESTIC & GENERAL 7 DAYS

Tip-trucks 6m³ & 10m³, Bobcat, Excavator,
Post Hole Boring, Trenching, Slashing.
SUPPLIERS OF SAND, SOIL & MULCH



WE NOW SELL CHOOK PELLETS

ALL AREAS



**76 Main St, Bruthen
M: 0429 944 297**



C13151

Bird of the Month: Scarlet Honeyeater

The Scarlet Honeyeater is a small vivacious honeyeater found along the east coast and hinterland from Cooktown in north QLD to south-east Victoria. Resident in the north of its habitat range, breeding occurs on the east coast of NSW and QLD. It is seasonally migratory in the south seeking flowering food plants, typically arriving in late spring and staying through summer before heading north for the winter. Prior to 2020, sightings of Scarlet Honeyeaters in Victoria were mostly in East Gippsland. In recent years they have been recorded further west with sporadic sightings in areas like Morwell, Melbourne and beyond. The attached photo was taken in a garden in Walhalla in West Gippsland in late October, where the bird was feasting on a flowering Waratah in the company of several other honeyeater species.

The name of this honeyeater reflects the distinctive red colour of the adult male, notable for its brilliant scarlet face, breast and back, with wings and tail a contrasting black. Adult females and immature birds are uniformly pale brown/grey with a faint blush of red on the face and chin. Both sexes have a dark eye area, a relatively short tail and a strongly curved bill. Scarlet Honeyeaters have a pleasing lilting song, surprisingly loud, the male singing from a high exposed branch. Contact calls are high pitched with a somewhat mournful tone.

This small honeyeater is usually seen alone or in pairs, occasionally in flocks gathering to feed in flowering trees, often in the upper canopies. They feed mainly on nectar, also fruit and insects. Preferred habitat for the Scarlet Honeyeater includes forest, heath and swamp, parks and gardens, sometimes in higher altitudes in the northern reaches of their range.

Scarlet Honeyeaters breed in pairs, the small cup nest suspended from a horizontal branch or in a fork, concealed in dense foliage. The nest is made from fine bark and grass bound with spider web and lined with fine plant materials. The female incubates the eggs alone but both parents feed the young. Up to three broods may be produced in a season.

While the Scarlet Honeyeater population is considered stable across a large geographic range, they face significant threats. Logging and land clearing reduce availability of food and nesting sites, and agricultural expansion results in habitat loss, particularly impacting ground and understorey vegetation. With habitat changes, there is increased competition from larger more aggressive honeyeaters like the Red Wattlebird, Noisy Miner and Friarbirds, as well as predation by introduced species. Land clearing also fragments woodlands and disrupts connecting habitats, making it harder for birds to move between sites. The impact of a changing climate poses a longer-term risk to food and habitat security, with sharp declines in



Male Scarlet Honeyeater by Chris Healey.

populations noted after drought, fire and flood crises.

Birdlife East Gippsland welcomes visitors and newcomers

Birdlife East Gippsland meets weekly from 9am to 12pm on Mondays, including a tea break.

New members and visitors are always welcome. The annual schedule of outings across the region ensures diverse locations and interesting bird observing.

The records collected are submitted to the national database.

BYO refreshments & water; wear appropriate clothing, boots and sun protection. Binoculars are handy. Planned outings may be affected by regional weather and emergency warnings. If unsure, please check via Birdlife East Gippsland Facebook page or email.

eastgippsland@birdlife.org.au



TAMBO RAMBLER

Tambo Rambler Advertising Costs

BLACK AND WHITE Advert Options

- ⇒ 9 x 5 cm - Cost \$15.00
- ⇒ 9 x 8 cm - Cost \$20.00
- ⇒ 1/4 page - Cost \$25.00
- ⇒ 1/2 page - Cost \$50.00
- ⇒ Full page - Cost \$100.00

COLOUR Advert Option 1: Full Page

- ⇒ One full page, full colour feature / advert placed on the inside cover of the Tambo Rambler
- ⇒ Plus acknowledgement as the major sponsor for that month's edition of the Tambo Rambler
- ⇒ Cost - \$165 per edition

COLOUR Advert Option 2: Half Page

- ⇒ One half page, full colour feature / advert placed on the inside cover of the Tambo Rambler
- ⇒ Plus acknowledgement as the sponsor for that month's edition of the Tambo Rambler
- ⇒ Cost - \$100 per edition

COLOUR Advert Option 3: Quarter Page Full Colour Promotional Package

- ⇒ One quarter page, full colour feature / advert placed on the inside cover of the Tambo Rambler
- ⇒ Plus acknowledgement as the co-sponsor for that month's edition of the Tambo Rambler
- ⇒ Cost - \$65 per edition

Closing date for February issue is January 25.

Please send your articles by e-mail only to:

tamborambler@gmail.com

(Word, Publisher, JPG or PNG format with photos please
PDF format will also be accepted.)

Tambo Rambler is distributed across East Gippsland via email and on the web page at

<https://bruthendistrict.org.au/tambo-rambler/>

We also distribute to Government representatives, Bairnsdale Library, Victorian State Library, and local Historical Societies

Hard copies are available in Bruthen at the P.O, General Store, Oppe Shoppe, Bakery, Bruthen Hotel and Neighbourhood House for a gold coin donation.

December exhibition at Bruthen Village Maker

Ingrid Smith-Rijneveld is a self-taught artist and has been painting for over forty years.

"I live in the beautiful East Gippsland area in Bairnsdale which provides continuous inspiration as landscape, seascape and botanical subjects are my preferred subjects," Ingrid said.

"I work mostly in soft pastels but also do quite a bit of acrylic painting and mono printing."

"I have won several awards for my work which can also be found in the East Gippsland Gallery shop. I am a member of the Bairnsdale Art Society as well."

"As well as paintings, I will be showing my archival prints which

can then be framed to the buyer's taste and a selection of original cards which make great gifts when wrapped together."



The Tambo Rambler Committee and BDCA do not take responsibility for opinions expressed by contributors to the Tambo Rambler. The Editors reserve the right to reject articles and advertisements and to edit submissions if necessary

All submissions must carry the author's full name, address and phone number. They may be published anonymously if preferred.



