

TAMBO RAMBLER

Bruthen and District Newspaper
Produced by Bruthen and District Citizens Association

November 2025

NUMBER 313



Bruthen CFA Open Day



GIPPSLAND
Community
Foundation

GCF proudly
supports the Tambo
Rambler
Community Paper

The Tambo Rambler is proudly sponsored this month by Shoreside Real Estate Lakes Entrance

The Tambo Rambler would like to acknowledge the Gunai Kurnai People, the Traditional Owners of the land on which we gather, and pay our respects to their Elders both past, present and emerging.

Bruthen Arts & Events Council Inc. President's annual report

The vision for Arts and Events is:- *Enriching our local community through creative, inclusive, sustainable and fun volunteer-led arts and events initiatives.*

In 2023 we all got together in a facilitated workshop to identify what we as a group want to achieve during 2024/25 and we produced a comprehensive plan of activities and targets many of which we have achieved. Earlier this year we checked back in on the plan to see how we were going and noted some areas that need some work including engaging youth. It is time to look at the plan again for 2026/27, which will be on our agenda at our next few meetings, so this is great time to hear what others in our community would like to see us doing.

I should also point out that we are only a small group of people and although we have a number of great helpers we could do with more people to make all these wonderful events happen.

Looking back it has been a busy 12 months once again.

- September we hosted the incredible **Casting Off circus show**. A troupe of women who truly amazed the audience with their circus skills, all done while chatting and making jokes. It had to be one of the best shows we have had in Bruthen.
- August was all about kids with **You're an Instrument**, a mixture of some science and comedy which kept the school kids enthralled and very engaged.
- October saw visual arts back on the agenda with **Mixed Bag Revival**, proving that artists were keen to see an art exhibition in Bruthen.
- December was all about us with our annual Christmas breakup.
- January was the 2nd **Eat Drink Explore** food and wine festival for Bruthen which we were very pleased with. It included more than just food and wine with an art component and regional live music. Although a success it showed that we cannot do it without grants and it is therefore, unfortunately, not sustainable as an ongoing event.
- March. The Bruthen Art Collective ran a series of come and try events at the hall. After searching for a suitable venue for the Art Collective we have finally come to agreement with the Neighbourhood House to use the back room of the CH Centre. Drop in on a Friday evening from 5pm.
- April. We combined efforts with the Forge Theatre to add onto the '**Evening without Kate Bush**', show which was a delightful mixture of comedy, song and dance. Amanda King ran several dance training days culminating with the Red Dress run down the hill to Kate Bush music, and of course we provided dinner before the show started. We hope to work with Forge Theatre on more collaborative events next year.
- June was busy! **Bruthen Has Got Talent**,

attracted young people wanting to show off their talents, there was some more dance training, medieval this time, and the big event was the **Medieval Winter Fire Festival**. Attracting many visitors to the region, the festival saw over 2100 people coming through the gates. It has become the feature event for the East Gippsland Winter Festival. And it goes on, with grant applications in progress to hopefully bring a show for kids and a one woman comedy show to town next year, plus an international folk music performer from the Woodford Fold Music festival, to the Mossiface/Wiseleigh Hall. The **Medieval Winter Fire Festival** will be back as will the **Mixed Bag** art exhibition.

But we want to know what our community want to see happening in Bruthen so please let us know what your ideas are. Talk to us, message us or email bruthenaande@gmail.com. We promise to look at them and discuss them and if do-able, do them.

Bruthen Arts and Events Council Inc held its annual meeting at the Skate Park on Sunday, October 19. Elections for executive positions were held with all incumbent members being retained. Attendees enjoyed catching up over a barbecue meal afterwards.

President – Joy Manley

Secretary – Eva Grunden

Vice President – Lesley Czulowski

Treasurer – Jeff Wagstaff

Catering Coordinator – Amanda King

Ordinary Members – Jane Cooper, Marg Pearson, Merewyn Davis, Tanja Hennekham, Heather Rose.

Joy Manley, President

Meet The Team At



03 5155 3133

1/521 Esplanade, Lakes Entrance VIC 3909

shoresidere.com.au

admin@shoresidere.com.au

Community turns out for Bruthen CFA Open Day

The Bruthen CFA Fire Brigade threw open its doors on October 25th, for their annual Open Day and the community came out in force to show their support. Locals of all ages dropped by to meet the volunteers, check out the trucks, and pick up some practical fire safety tips ahead of the summer season.

Both the tanker and the brigade's ultralight were on display, drawing plenty of curious looks (and a few wide-eyed kids). Lieutenants Mike and Bryce, along with Firefighter Jon, gave demonstrations and answered questions about how the vehicles are used during different types of incidents. Visitors were able to climb aboard, take a closer look at the gear, and see what it takes to keep the community safe when things heat up.

Throughout the day, short info sessions covered everything from writing a fire plan to understanding the Fire Danger Ratings. Firefighters Bob and Neil were kept busy at the information stand, chatting with locals about how to get their properties ready, and even how to sign up as CFA volunteers themselves.

No one went hungry thanks to Marj, Alan and Shane, who kept the barbecue sizzling with

sausages and onions. Kids were well looked after too, with fun activity packs keeping them entertained while parents took in the safety sessions.

All up, it was a great community day, plenty of smiles, sunshine, and a real sense of local pride. The Bruthen brigade would like to thank everyone who came along and helped make the day a success.

With the fire season fast approaching, the message from the brigade is simple: stay prepared, stay informed, and stay safe.

Kylie Martin



Photos: Lieutenant Mike with the tanker, and Marj and Alan at the BBQ.



Bruthen Licensed Post Office

(Est.1893)

Photocopying
Scanning /
Emailing
Documents



Fax
Service

Bill payments, Banking deposits & withdrawals, Western Union, Stationary, Wrapping Paper, Gift & Greeting Cards, PostPak & Australia Post Postal Services.

Phone/Fax (03) 5157 5209

AED



IN AN EMERGENCY

AED



Bruthen has Heart Start Defibrillators

Located at:

- Bruthen Bowls Club:**
On the Veranda. Accessible 24/7 (under video surveillance)
- Bruthen General Store:**
7 days a week during business hours
- Bruthen Recreation Reserve:**
For Sport Events / Caravan Park.
- Bruthen & District Neighbourhood House:**
During business hours.
- Bruthen Fire Brigade:**
On responding appliances and in the station.
- Mossiface Hall:**
On the front veranda.

AED



AED



Insurance worry for Halls over 2025/26 Year

Many people will have heard that in July East Gippsland Shire had notified 38 public halls and recreation facilities built on Crown land and managed by a committee officially appointed by DEECA, that they were no longer insured by council. This decision applied to Bruthen Mechanics Hall, Mossiface & Wiseleigh Memorial Hall and Bruthen recreation reserve, meaning that they have not been insured since June. DEECA provides Public Liability Insurance and continue to do so.

This decision was made without any consultation, contrary to the Council's own policies, and notified to Management Committees after the insurance had lapsed.

A meeting of affected facilities was called by Sarsfield Community group where attendees, including those attending online agreed that none could afford to pay insurance which would be much more than the Shire pays. Sarsfield had quotes of \$14,000pa to insure their new facility and EG Shire paid \$47,000to insure 38 facilities! It was decided to attend a Council meeting to state our case, submit a press release to the Advertiser and to write letters to all councilors and local politicians.

You can imagine the relief when we saw an article in the monthly Shire newsletter to see an article written by the Mayor saying that the insurance will be paid this year and reviewed for following years. Committees of Management are very please to know that their efforts were successful and will continue to push for an ongoing solution that results in all 38 buildings being insured every year.

WHO RUNS OUR HALLS?

- Community halls are an important space in all communities. They are managed by volunteer

committees of management who are responsible for coordinating bookings, managing finances, maintenance and improvements.

- Established in 1883 the Bruthen Mechanics Hall has regular Tai Chi classes, weekly church services and numerous meetings, social gatherings, cooking classes using the great kitchen, music performances, live shows, an annual art exhibition and more. It is also a designated Assembly Site in the case of an emergency.
- Mossiface & Wiseleigh Memorial Hall is the only public meeting place in Mossiface currently being used several times a week for martial arts classes, occasional social event and meetings
- As with all volunteer run organisations in our District it has been difficult to maintain viable committees for both halls so some innovation had to be used. For a number of years the same people have been on both committees of Management with both meetings taking place on the same day and alternating between venues. Meetings are held second monthly unless some urgent business comes up.
- Funding to run the halls comes from rental fees, grant application writing and an annual Council Allocation. Bruthen receives \$2,200 annually and Mossiface & Wiseleigh ???

Anyone interested in supporting the halls in anyway can contact us on Ph 0490819507 or email

bruthenhall@gmail.com or
mossiface.wiseleigh.hall@gmail.com.

FULL LIST OF IMPACTED COMMUNITY FACILITIES:

| | | |
|--|--|---|
| Bemm River Recreation Reserve | Benambra Recreation Reserve | Benambra Public Hall |
| Bengworden Hall | Bonang Hall | Bruthen Mechanics Institute |
| Bruthen Recreation Reserve | Buchan Mechanics Hall | Buchan Recreation Reserve |
| Bullumwaal Mechanics Institute | Cabbage Tree Creek Hall | Cann River Hall and Recreation Reserve |
| Cassilis Recreation Reserve | Clifton Creek Hall and Recreation Reserve | Club Terrace Community Reserve |
| Combienbar Hall | Ensay Mechanics Institute | Ensay Recreation Reserve |
| Fernbank Public Hall Reserve | Flaggy Creek Hall and Recreation Reserve | Gelantipy Hall Reserve |
| Glen Valley Hall | Glenaladale Hall Reserve | Goongerah Hall Reserve |
| Hinnomunjie Recreation Reserve | Johnsonville Public Hall | Lakes Entrance Recreation Reserve |
| Lindenow Memorial Hall Reserve | Lindenow South Recreation Reserve | Mossiface Hall |
| Noorinbee Public Purposes Reserve | Nowa Nowa Public Hall | Sarsfield Recreation Reserve |
| Swifts Creek Recreation Reserve | Tubbut Hall | Wairewa Hall and Recreation Reserve |
| Wulgulmerang Recreation Reserve | Wy Yung Hall and William McBriar Reserve | |



Volunteers join Parks Victoria to reopen seasonally closed road and track network

Over four productive days this October, four clubs from Four Wheel Drive Victoria and volunteers from the Friends of Errinundra teamed up with Parks Victoria rangers across Bendoc, Cann River, Mallacoota and Orbost to restore access to some of Victoria's most remote and rugged landscapes in the Snowy River and Errinundra national parks.

This annual community effort – now in its 19th year – supports the reopening of the seasonally closed road and track network across the state.

The closures, which run from June each year, help protect drivers, track conditions and the environment from harm during the wet and snowy months.

A highlight for both volunteers and Parks Victoria crews, the teams worked together to prepare impacted areas for their reopening from October 31.

Key achievements included:

Opening seasonal closure gates across key 4WD tracks that make up the Snowy Icon Drive in the Snowy River National Park and scenic routes through the Errinundra National Park

Clearing fallen trees from roads and access points


Restoring walking tracks to improve visitor access and safety.

"Our partnership with Four Wheel Drive Victoria and the Friends of Errinundra shows what's possible when community comes together," said Dave Burton, Parks Victoria Area Chief Ranger.


"These volunteers bring not only skill and equipment, but a genuine passion for preserving and protecting these remote landscapes for everyone to enjoy.

Through collaboration, we ensure our parks remain accessible, safe and welcoming for all, and it's a great reminder of the vital role volunteers play in helping us look after Victoria's natural treasures."





DANIEL CALABRO New Homes - Renovations - Extensions

Mob. 0407 524 256 calabrobuiders@aussiebb.com.au 

Specialising in new home builds – extensions – renovations – bathrooms – pergolas & decks.

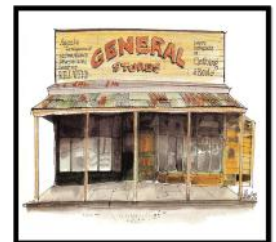
Registered with over 35 years of experience – your local & trusted builder.

Obligation free quote – call Daniel on 0407 524 256.

**54 Main Street,
Bruthen.**

Open 7 days

Ph: 03-51575 415



- Supplier of groceries, fresh fruit & vegies, hardware, fishing supplies and basic newsagency.
 - Beer, wine, RTD cans and ice.
 - Swap & Go BBQ Gas bottles.
- Shop local – support local employment**
email: BruthenGeneralStore@gmail.com

D T Y K C H Y P B L P G T B Y
 Q U C I D D E O A A V P Z L R
 N J S R O D L C N N S S Y U T
 I U U L A F I B K A O S K E N
 M M E L T S E W Z J I T P S U
 T M B K S W O I X Z R P E R O
 R J F A J A B X R I Z N Y S C
 E E L H A R M O N Y P A F M V
 B C D Q F V F Z J V N H J K I
 L D R A O B Y E K G O X Y N O
 E N O H P O X A S L L I C U L
 B W S I U K U L E L E H C P I
 U L W V W P L D R Y O D Q E N
 T U Z G U I T A R I B Y W J G
 W Q J K F F I R R Z B J E A P

MUSIC
SAXOPHONE
BASS
COUNTRY

NOTES
PIANO
TREBLE
MELODY

GUITAR
PUNK
PEDAL
HARMONY

BLUES
CLASSICAL
RIFF
VOICE

CHOIR
UKULELE
JAZZ
VIOLIN

DRUM

KEYBOARD



Darren Chester
 Putting Locals First

#lovegippsland



THE NATIONALS for Gippsland

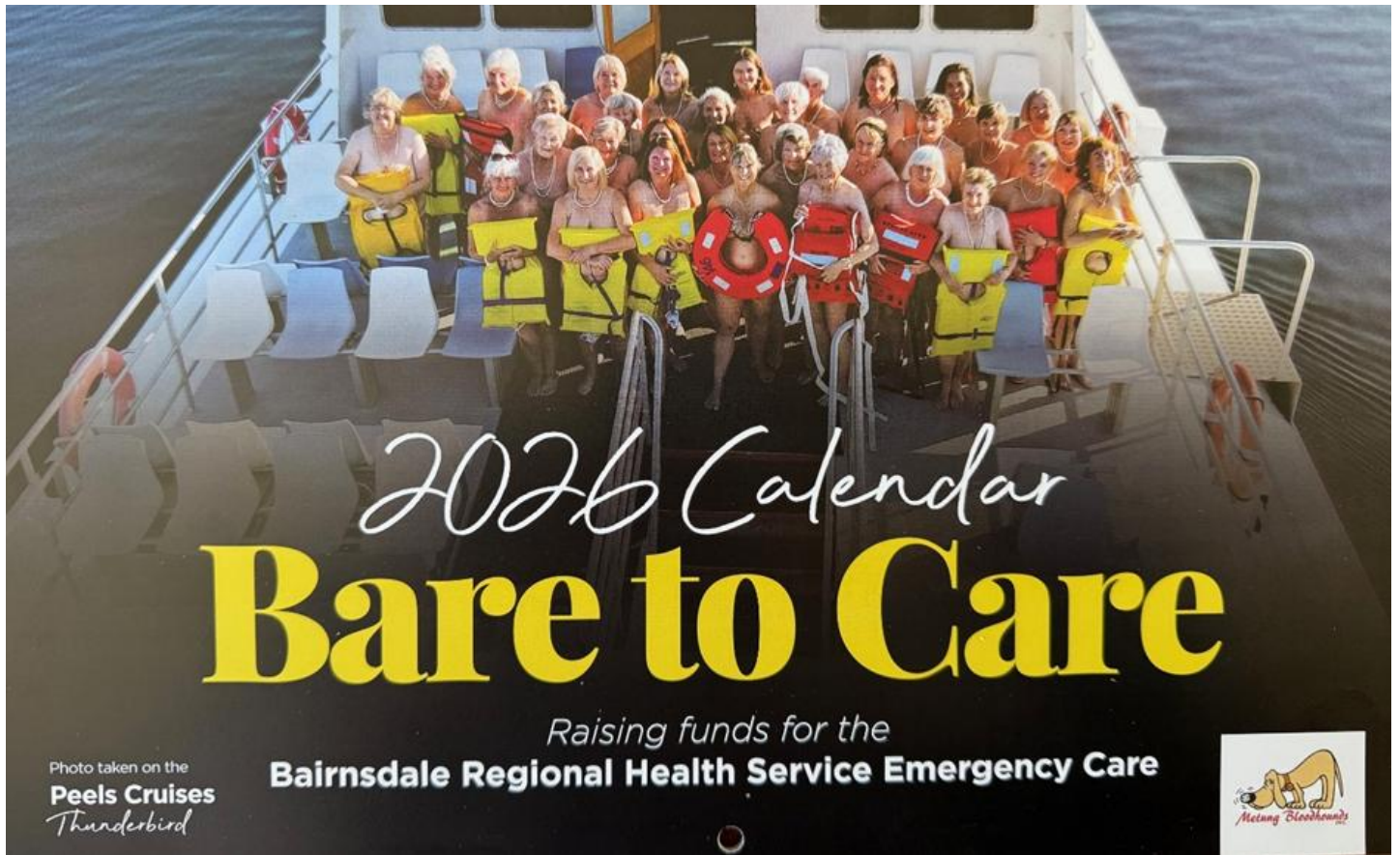
www.darrenchester.com.au

Authorised by Darren Chester MP, Nationals Party of Australia, Level 1, 69-81 Round Street, Sale VIC 3850

Target Words

| | | |
|----------|----------|----------|
| C | I | O |
| N | A | D |
| O | C | R |

How many words of four or more letters can you find? Every word must use the centre letter, and each letter can only be used once. And what is the 9-letter word?



Established in 1996, the Metung Bloodhounds are a volunteer organisation dedicated to supporting community initiatives throughout East Gippsland and raising significant funds for local causes.

This year, they have launched a new fundraising initiative; the 2026 'Bare to Care Calendar'; for Bairnsdale Regional Health Service (BRHS), with proceeds supporting vital improvements to its Emergency Care facilities.

The 2026 calendar is a true community effort, with local businesses providing picturesque backdrops and donating initial costs for printing and production services to ensure that every dollar from each sale goes directly to upgrading the Emergency Ward.

Calendars can be purchased:

At every Lakes Entrance, Metung, Paynesville and Howitt Park market between now and Christmas.

In Bruthen: Honey Cafe, Discount Pharmacy, Ye Olde Opp Shoppe and the Bruthen General Store.

In Metung: Aroma, the Metung Hotel, Chez Joe and The Metung General Store.

In Bairnsdale: Lucke's, The Book Orchard, Cooper's Travel, Potted Pear and the Hospital gift shop.

In Lakes Entrance: Peels Cruises, the Aquadome, Cunninghame Arm Medical Centre and Matt's Hair Factory.

Calendars can also be purchased online at Trybooking at the link below:

<https://www.trybooking.com/DDXID>

Don't really want to buy a calendar but would love to support the Bairnsdale Hospital initiative

Donations can be made at Trybooking at the link

below:

<https://www.trybooking.com/au/donate/bloodhoundsdonations>

Every dollar of your donation or your calendar purchase will go towards improving your BRHS Emergency Care facilities. Every donation made or calendar sold makes a difference for our community. Support us and get your calendar or make your donation today!!

Be part of something special!!!!

Bruthen Inn Hotel



Kitchen is open 7 days

Lunch 12-2pm (excl. Tues) Dinner 6-8pm

Tuesdays open from 5pm

Friday night raffles supporting local sporting clubs—10 draws.

Catering for private functions and community meetings

Courtesy bus operates Wed, Fri, Sat nights only

For enquires or bookings contact Bruthen Inn Hotel.

Cheers and beers, Stretch

Phone (03) 51575201

Local band sings to the birds

The Welcome Back The Birds event, held at the Eagle Point Foreshore on Friday 10 October, was a terrific day of varied activities much appreciated by a very engaged crowd that included a good number of Bruthen and district locals in a range of roles.

The occasion celebrated the return of migratory birds from the Northern Hemisphere and gave the chance for young and old to learn through displays and activities put on by a diverse range of local groups and organizations. Two of the key organisers were Lisa Wilson from EGCMA (East Gippsland Catchment Management Authority) and Martin Potts from Greening Australia. And one of the highlights of the day was a performance by local band The Rufous Whistlers led by Todd Cook (vocals and acoustic guitar), Martin Potts (double bass and backing vocals), Brent Hodgkins (ukulele, drums and backing vocals) and Kobey Dorber (banjo). They were backed by the Alleycats Community Choir led by Eva Grunden.

The band and choir performed Todd's song *Shorebird*, inspired by his meeting with Melbourne-based author Harry Saddler. Harry had attended the Stories of Influence gathering at Lake Tyers in 2019, to discuss his book *The Eastern Curlew: the extraordinary life of a migratory bird*, which was shortlisted for the Queensland Literary Awards that year.

The Eastern Curlew is one of 37 species of shorebirds that undertake the amazing journey through the East-Asian-Australasian Flyway from the Northern Hemisphere, from places such as Siberia, Alaska and Japan, to Australia and New Zealand, and back again. Other species include the Bar-tailed Godwit, the Latham Snipe, the Comon Greenshank, the Great Knot, and the Sharp-tailed Sandpiper, just to mention a few. Millions of birds are involved in these epic flights southward before the onset of winter. Bar-tailed Godwits get top honours for non-stop flights. One, which had been tagged, broke the record by flying 13,560 kilometres from Alaska to Tasmania in just 11 days in 2022 without stopping for food or rest. It probably lost more than half its body weight on the journey.

How do migratory shorebirds do it? Obviously they need to fuel up before setting off, or at stopover points such as coastal mudflats and wetlands. They build up vital fats and flight muscles, while with some their digestive organs and leg muscles shrink, their blood thickens and their heart grows larger. And it's essential that they have healthy, productive habitats awaiting their arrival.

Sadly, many of our shorebirds are declining in numbers, with some species critically endangered due to habitat destruction, pollution, disturbance of sites, predation by introduced species, and climate change. Over the last 30 years some species have undergone population declines of up to 80%. There are however moves by a range of groups and



management bodies to work together to protect these miraculous birds. See <https://birdlife.org.au/programs/migratory-shorebirds/>

It's worth noting too that there are other migratory bird species that travel shorter distances that also deserve our concern, such as the critically endangered Orange-bellied Parrot and the Swift Parrot that fly across Bass Strait from Tasmania to Victoria.

EGCMA CEO Bec Hemming commented that the event at Eagle Point "was the perfect place for people to learn about inspiring initiatives across the Gippsland Lakes and surrounding catchments, and to discover how habitat restoration projects are helping support the migratory birds that visit our region."

"People discovered the vital role Australia plays in the East Asian-Australasian Flyway and how simple actions, like observing signage and keeping dogs on leads, can help protect these vulnerable species."

"The enthusiasm leading up to and on the day helped create a friendly and welcoming space for everyone – and reminded us how powerful it is when people come together to talk and share ideas and knowledge," added Bec.



BAR-TAILED GODWIT
Image by David Young



Todd Cook commented “Hopefully the song (Shorebirds) gives the birds and their habits some due credit to help create some awe surrounding their amazing feats and people can truly respect and feel deeply about this special part of the world. The Alleycats Choir collaborated not just at ‘Welcome Back The Birds’ but also for the launch of our album Heal Plant Grow at the Bruthen Mechanics Hall for the EGwinterfest, bringing passionate caring voices into the fold. The song was recorded at the Bruthen Music Recording Studio and features Martin Potts on Bass, Brent Hodgkins on Ukulele and drums, Alex Burkoy on Violin. You can listen to the song on all streaming platforms. But bandcamp is definitely preferred.”

As the song concludes: “You’ve got to love where you live.”

(<https://www.youtube.com/watch?v=UJqxITK6fOY>)

Jenny C



Bruthen

Discount Pharmacy

Caring for Our Local Community

Prescriptions • Health Checks •
MedsCheck • NDSS Webster
Packs • Vaccinations & Injection
Services • Health & Beauty
Ranges • Local Delivery

Mon–Fri: 8:30am–5pm | Sat: 9am
–12pm

60 Main Street, Bruthen Ph: 5157 5224

Email: bruthenpharmacy@outlook.com

A cat named Lily

I adopted Lily in 2012 from the RSPCA in Burwood. I was set on getting a small kitten, but some unknown force persuaded me to look through the area with the larger cats. Lily, or Jessie as she was named, was the very last cat I met. She headbutted me, and in that moment I knew she had chosen me. It felt like destiny.

In all the years I've had Lily as my companion, she's lived in 11 different houses with me, with various housemates, cats and dogs.

She was always rather skittish, never the cat to greet people. She'd rather run away and hide when meeting new people! Especially kids.

When I was pregnant with my firstborn, Lily often sat on and around my growing belly. We birthed my son at home, and Lily sat there next to me during the labour, especially the final stage. She watched the birth, like a guide or a protective energy. She's always had a special bond with my son. It's surprised me over the years how well she has adapted to the family expanding. She's welcomed both of my kids into our house and home, and she's tolerant and even affectionate with them both, like she knows they're an extension of me, of us.

She's slowed down a lot in the last few years, too much jumping in her youth has her joints aching, so she chooses the comfort of the couch, or wherever the sunshine is. Even if the door is open and outside calls, she much prefers the comfort of home.

She doesn't like feet at all, and will attack you if you touch her with your feet.

We have to hide sticky tape and adhesive tapes, she will eat them and vomit them up somewhere inconvenient.

Jess S.

Birdlife East Gippsland Walk

Picnic Point, Mitchell River

Bairnsdale

Sunday 23 Nov.
9am -10.30am.
 Meet in Picnic Point
 Carpark, beside Mitchell
 River (Bredt Street).
 Approx 2-3 km walk.
 BYO Binoculars.
 No toilets nearby.
 More information;
 Text: 0427281445



EASTERN YELLOW ROBIN
 Photo by David Young

Birdlife East Gippsland are having a **FREE** educational bird walk on Sunday 23 Nov. 9am -10.30am. Part of a Citizen Science project: **BIRDATA**.

Join us to learn about and monitor local birds in the area....



Get Ugly & Jolly To Join Us for the Ultimate
UGLY FESTIVE OUTFIT & CRAZY CHRISTMAS HAIR COMPETITION

Carols in the Gardens

If you would like to perform a Festive Tune or Christmas Carol for your community on the night please contact B&DNH today!
 0497544490



Eat, Drink, Sing & be Merry

Community Carols Christmas Party

5TH DECEMBER 2025 @ 6PM



GOLD COIN BBQ, POPCORN & FAIRY FLOSS

MAIN STREET GARDENS BRUTHEN
CAROLS | MUSIC | FOOD | FUN | RAFFLES | PHOTO BOOTH WITH SANTA

info@bdnh.org.au
 0497 544 490



Facebook

Bruthen & District Neighbourhood House

Bruthen - Bairnsdale Bus Timetable Dysons Bus Lines Ph: 5152 1711

| Bruthen to Bairnsdale Morning | Monday & Friday AM | Tues, Wed, Thurs AM |
|---|-----------------------|------------------------|
| Bruthen (opp) General Store | 08:10 am | 09:50 am |
| Bairnsdale, Corner Main & Bailey St | 08:30 am | 10:20 am |
| Bairnsdale Train Station | 08:35 am | 10:30 am |
| Bairnsdale to Bruthen Afternoon | Mon to Thurs PM | Friday PM |
| Bairnsdale Train Station | 1:25 pm | 3:40 pm |
| Corner Chemist (Service & Main Street) | 1:30 pm | 3:45 pm |
| Bruthen, Station & Great Alpine Rd | 2:00 pm | 4:15 pm |

EAST GIPPSLAND
SHIRE LIBRARIES

Mobile Service Centre / Library Bruthen (Main St)



What can you do at this mobile service centre?

- Borrow books, CD's, DVD's, audio books and more
- Pick up a Council newsletter and subscribe
- Lodge a report or request
- Pay an account / make electronic payments
- Make enquiries, collect and lodge application forms
- Register your dogs and cats
- Access and complete surveys
- Learn about and provide feedback on projects in your community
- Use a computer with free internet access
- Have a chat and much more

Wednesdays
Fortnightly
11.15am - 12.30pm
Fortnightly

Jan 8th & 22nd
Feb 5th & 19th
Mar 5th & 19th
Apr 2nd, 16th & 30th
May 14th & 28th
Jun 11th & 25th

Phone **5153 9500** with
any queries about
the service.

LIBRARIES
Change Lives



GLCH

Services @ Bruthen

GP Clinic

- Available Wednesdays by appointment only.
- Ensure your appointment is scheduled in Bruthen.

Community Health Nurse

- Available Mondays and Wednesdays.
- Fees apply, but no one will be denied service due to inability to pay.

Maternal & Child Health

- Available once a month on a Tuesday by appointment only.

Pathology Collection

- Open Mondays and Wednesdays, 8:30 AM to 11:00 AM.
- Nurse fees apply.

Room & Bus Hire

- Available for bookings.

Booking and Contact Information

Call 5155 8300

- For GP Clinic and Community Health Nurse appointments, select Option 1.
- For Room and Bus Hire, speak with our Customer Service team.

Learn More

- Visit: glch.org.au
- Follow us on social media!



Tim BULL MP

MEMBER FOR GIPPSLAND EAST

*Servicing Bruthen and
district community.*



143 Main Street, Bairnsdale VIC 3875

03 5152 3491

tim.bull@parliament.vic.gov.au

Funded from Parliamentary Budget

Dear Local Legends,

As the festive season approaches, we're thrilled to invite you to be a special part of our annual Community Christmas Carols! Last year, it was truly amazing to see so many local children and groups involved and performing, and we're determined to make this year's event even bigger and better!

We're looking for local groups like yours to share your festive spirit by performing one or two carols of your choice. It's a wonderful opportunity to

DO YOU HAVE DEVELOPMENT IDEAS?

TALK TO THE TEAM AT DSV!

Our team is highly experienced, passionate and ready to help you make your project dreams a reality, from concept development to completion.

Call us today for all your planning needs.

admin@devsolvic.com.au | 48 Bailey Street, Barmuda | (08) 5152 4858



Sing Your Heart Out This Holiday Season!

BRUTHEN'S CHRISTMAS CAROLS

seeking performers

If you would like to perform a Festive Tune or Christmas Carol for your community on the night please contact B&DNH today!

0497 544 490

DECEMBER 5TH 6PM

- Perform Your Holiday Favorites
- Solo, Duet, & Group Performances Welcomed

Sign up early to assist with planning

showcase your talent and help us usher in the Christmas cheer for our entire community.

Our Community Christmas Carols will take place on Friday, December 5th at 6:00 PM in Main Street Gardens.

This year we are wanting to mix things up, so we're asking locals or community groups to band together (or perform solo) and practise a carol to perform on the night (in the style of your choice!)

Following a sing-along carols concert, we'll be hosting a BBQ, complete with sweet treats like fairy floss and popcorn. There will be exciting raffles, and of course, a very special visit from Santa himself!

And for those who love a bit of extra festive flair, don't forget we're also hosting an 'Ugly Festive Outfit' and 'Crazy Christmas Hair' competition – start planning your masterpieces now!

If your group is interested in being a part of this wonderful community celebration, please contact Nikki or Marty at Bruthen and District Neighbourhood House (BDNH). Let us know your preferred song choices and if there's any way we can support your performance. We supply everything electronic you need & we're here to help make your performance shine!

Let's make this year's Community Christmas Carols one to remember for young and old alike!

Contact: 0497 544 490.

TRADES AND SERVICES

Bruthen Garden Supplies

NOW OFFERING WATER CARTAGE

- 13,000L WATER CARTAGE.
- DOMESTIC & GENERAL 7 DAYS

Tip-trucks 6m³ & 10m³, Bobcat, Excavator, Post Hole Boring, Trenching, Slashing.
SUPPLIERS OF SAND, SOIL & MULCH



WE NOW SELL CHOOK PELLETS

ALL AREAS



76 Main St, Bruthen
M: 0429 944 297



C13151

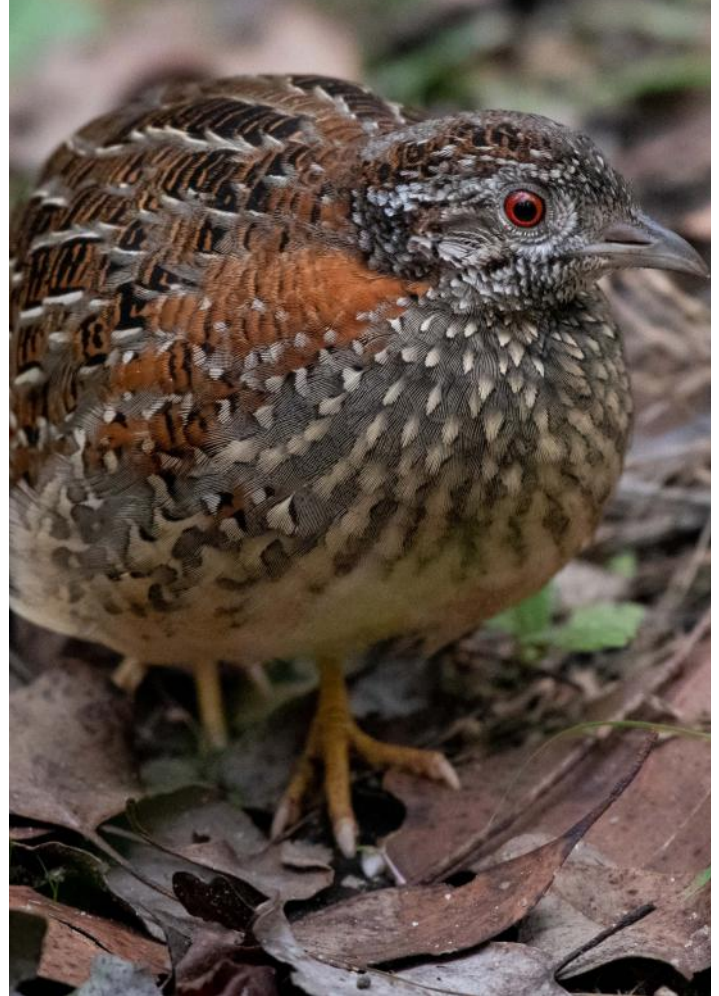
Bird of the Month: Painted Button Quail

Button-quails are cryptic ground-dwelling birds. While superficially similar to true quails, they are unrelated. Shy and elusive, they are usually encountered when they are disturbed and flushed from their cover. They burst from almost underfoot with a startling whirr of wings, flying fast a metre or so above the ground before dropping and running for cover. The attached photo of a Painted Button-quail was taken on the Bruthen Walking Trails, a pleasant surprise on a morning walk.

Painted Button-quails are large woodland button-quails with a slender bill and a rufous-brown blaze on the shoulder. They have a grey breast and belly with a dense overlay of buff, drop-shaped spots and white spotting on forehead. The adult Button-quail has grey-brown upperparts with fine black and rufous barring and white streaking. The female is brighter than the male with larger rufous shoulder patch, a blacker forehead with cleaner white spots and longer buff spots on breast.

The Painted Button-quail has an unusual resonating booming call like the Common Bronzewing. The booming call is used in courtship and between pairs that have lost contact while foraging. They are found in dry open forests and woodlands, especially eucalypts, with abundant leaf litter and an adequate understorey of grass, small shrubs and fallen timber. Seen singly, in pairs or small groups, the Painted Button-quail will forage on the ground by spinning about on alternate legs to expose seeds and insects, making saucer-sized depressions known as platelets. Noticing these platelets on the forest floor may be the first hint of their presence.

The female lays 3-4 eggs in a saucer shaped domed nest of leaves, sticks and grasses built on the ground beneath a tuft of grass, small bush or at the base of a tree or rock. She is polyandrous and after laying her eggs she moves on, making her booming call to attract a new male to mate with. She may do this 3-4 times in a breeding season. The male incubates and feeds the young for 7-10 days after they hatch, closely attending the foraging chicks. The chicks can fly 10 days after leaving the nest.



Painted Button-quail. Photo by Sue Allison

Threats faced by the ground dwelling Painted Button-quail include clearance and grazing of woodland habitats and predation by introduced and feral predators. While areas burnt by bushfires are often quickly re-colonised if there is dense regeneration of seeds, low intensity, controlled burns may not encourage this seed regeneration so may be detrimental to this foraging species.



November 2025 Outings Schedule

| DATE | LOCATION | 9AM MEETING PLACE |
|----------|--|---|
| Nov 10th | Munday Property. | 170 Bellbird Rd. Granite Rock/Clifton Creek. |
| Nov 17th | Buchan Caves Reserve. | Buchan Caves Reserve Carpark. |
| Nov 24th | Oriental Claims/Cassilis Recreation Reserve. | Oriental Claims Carpark, off Gt. Alpine Rd. Omeo. |

TAMBO RAMBLER

Tambo Rambler Advertising Costs

BLACK AND WHITE Advert Options

- ⇒ 9 x 5 cm - Cost \$15.00
- ⇒ 9 x 8 cm - Cost \$20.00
- ⇒ 1/4 page - Cost \$25.00
- ⇒ 1/2 page - Cost \$50.00
- ⇒ Full page - Cost \$100.00

COLOUR Advert Option 1: Full Page

- ⇒ One full page, full colour feature / advert placed on the inside cover of the Tambo Rambler
- ⇒ Plus acknowledgement as the major sponsor for that month's edition of the Tambo Rambler
- ⇒ Cost - \$165 per edition

COLOUR Advert Option 2: Half Page

- ⇒ One half page, full colour feature / advert placed on the inside cover of the Tambo Rambler
- ⇒ Plus acknowledgement as the sponsor for that month's edition of the Tambo Rambler
- ⇒ Cost - \$100 per edition

COLOUR Advert Option 3: Quarter Page Full Colour Promotional Package

- ⇒ One quarter page, full colour feature / advert placed on the inside cover of the Tambo Rambler
- ⇒ Plus acknowledgement as the co-sponsor for that month's edition of the Tambo Rambler
- ⇒ Cost - \$65 per edition

Closing date for December issue is November 25.

Please send your articles by e-mail only to:
tamborambler@gmail.com
 (Word, Publisher, JPG or PNG format with photos please
PDF format will also be accepted.)

Tambo Rambler is distributed across East Gippsland via email and on the web page at
<https://bruthendistrict.org.au/tambo-rambler/>

We also distribute to Government representatives, Bairnsdale Library, Victorian State Library, and local Historical Societies

Hard copies are available in Bruthen at the P.O, General Store, Oppe Shoppe, Bakery, Blue Bee, Hotel and Neighbourhood House for a gold coin donation.

The Tambo Rambler Committee and BDCA do not take responsibility for opinions expressed by contributors to the Tambo Rambler. The Editors reserve the right to reject articles and advertisements and to edit submissions if necessary

All submissions must carry the author's full name, address and phone number. They may be published anonymously if preferred.

BRUTHEN BOWLING CLUB NEWS IT'S BACK!

Following the huge success of the event last year, Bruthen's three major sports clubs (Football Netball, Cricket & Bowls) are again clubbing together (pun intended!!) to hold a combined FAMILY FUN DAY @ BRUTHEN BOWLING CLUB on SUNDAY, 7th DECEMBER from 12 midday onwards. Costs will be the same as last year - \$10 per person, or \$30 per family.

As well as some CHRISTMAS spirit, there will be food, drink, raffles, live music (courtesy Todd Cook), and of course - bowling! If you've not played before, you'll have a chance to see how much fun it is.

BAREFOOT BOWLS is on every THURSDAY from about 5pm onwards throughout Daylight Savings. As well as bowling (for all ages and abilities, including beginners), there will be food, drink and lots of chat! Our bar prices are very reasonable too!

A reminder that the clubhouse and green are also available for celebrations of all kinds, especially with Christmas approaching. We have a large and well-equipped kitchen, seating area and bar.

For all enquiries, as always, see us on Facebook, email (bruthenbowls@gmail.com) or contact Len Hooton on 0427 188188, or Don Cameron on 0409 608782.



Full line-up for October's Open Mic

The last Sunday of the month always brings a sense of excitement, camaraderie and connection to Bruthen Inn, thanks to the Open Mic's welcome resurrection more than a year ago. Tony and Amanda are committed to ensuring its ongoing success with nurturing encouragement and equipment. Thirteen musos filled the line-up and provided a rich and varied mix of originals, favourites and obscurities.

First up was Charles Northcote (Pete Snell on a gig-playing weekend from South Gippsland) with old skool bluesy songs and guitar. Glen Lamperd, as usual on cajon throughout the afternoon provided his usual impeccable beats. Johnny Cash's Folsom Prison Blues kicked things off.

Then a couple of originals - Perfect Picture of Health and the Froggy song were very entertaining. Mark McCord was up next with his wild twin-necked guitar and unique stylings. Mark likes to mix things up with changed melodies, phrasing and timing like his interpretation of Springsteen's I'm on Fire. He followed up with fairly authentic renditions of the Ozarks "Dark skies" (Everything that you do and nothing that you did) and Cosmic Debris (Mystery man) by Frank Zappa - such hilarious lyrics! Finished with a gorgeous version of Can't Get Next To You by the Temptations.

Malcolm played soulful ballads with a smooth mellow voice. Little Darlings was a highlight.

Regular Wayne was next - two originals - Save Us being the opener. Wayne's nerves have gone and his confidence and expertise have really grown over the months since he first had the courage to get up and have a bash. He has a beautiful, deep resonant voice, complementing strong, masterful guitar-driven songs. His last song was the heartfelt Brother by Tyler Braden.

Crowd favourite Az was joined by Wayne and Pierre on guitars and Glen as usual for fabulous heartfelt renditions of Save Me by Jelly Roll and How To Save A Life by The Fray. He rounded it off with the popular Pricetag by Jessie J. His strong tenor voice filled the vast space and he told me most singers are told to get closer to the mic whereas he's asked to move away!

Lyle, a professional muso who I've seen before at Kalimna, burst out of the blocks with the Doors' Roadhouse Blues. His well developed and powerful voice, excellent playing and stage presence filled the room.

An original with chopped guitar called The Line and this year's Rein Me In by Sam Fender completed his awesome set. Lyle is available for gigs and you can check out his website for upcoming gigs and booking details. <https://linktr.ee/LyleMcLoughlin> (<https://linktr.ee/LyleMcLoughlin>)

Pete, George and Glen belted out Christopher Cross's Ride Like The Wind and Billie Jean. Az then joined them to rap to The Message by Grandmaster



Flash and the Furious Five (Don't push me 'cos I'm close to the edge).

Bill travelled from Eagle Point and his guitar and vocal expertise perfectly complemented the Backslider's Down By The Riverbed and Country Road by James Taylor. On the last song he swapped his guitar for a tiny one and sang Stephen Still's Love The One You're With.

The ever-reliable John from Metung sang great versions of Little Feat's Dixie Chicken and Tripeface Boogie and Dylan's Man In A Long Black Coat, all of which did real justice to the originals.

Pierre soothed with two melancholy originals - Hold Back The Tears and another unnamed one, which he may call Unnamed! All Of Me by Willie Nelson rounded off his set and suited his professional laid-back style.

Keith finished up the final individual sets with his incredibly distinctive deep, bass voice booming In The Air Tonight by Phil Collins. Hoodoo Guru's What's My Scene followed. Nothing Else Matters by Metallica proved a popular choice to join in with.

For the final sing-along, Az joined Mark Svetlik, Pierre and Glen to play Sweet Home Alabama, Last Dance by Tom Petty and the Heartbreakers and All Over Now by The Stones.

It really is worth the effort to check out Bruthen's Open Mic sessions to encourage our local musicians and support Tony, Amanda and Stretch's endeavours to showcase the extraordinary talent out there. Supporting the venues that provide fantastic local entertainment, mostly for free or at little cost to us fortunate music-lovers, is vital. Please check out both fb pages.

Pamela B



First Birthday Celebrations

Penny Unsworth celebrated a year in Bruthen with cake and champagne on November 1, coinciding with the new art work by students of Rhonda Gray showing at Bruthen Village Maker

Kath G