

TAMBO RAMBLER

Bruthen and District Newspaper
Produced by Bruthen and District Citizens Association

June

2025

NUMBER 308



Councillor John White (Mayor EGSC), Brenda Streeter and James Nicholas (Rec Reserve Committee of Management), Celeste Calvert & Kiah Hood (Bruthen FNC), Linda Dillon (RR CoM), Judy Buhagiar (Netball Victoria), Tom Hardy (RR CoM) Gags Gallagher (ODFNL President)



Councillor John White (Mayor EGSC), Tom Hardy (Committee Member Rec Reserve), Neil & Brenda Streeter, James Nicholas (President Rec Reserve Committee of Management)



GIPPSLAND
Community
Foundation

GCF proudly
supports the Tambo
Rambler
Community Paper

The Tambo Rambler is proudly sponsored this month by Shoreside Real Estate Lakes Entrance

The Tambo Rambler would like to acknowledge the Gunai Kurnai People, the Traditional Owners of the land on which we gather, and pay our respects to their Elders both past, present and emerging.



Meet The Team At



03 5155 3133

1/521 Esplanade, Lakes Entrance VIC 3909

shoresidere.com.au

admin@shoresidere.com.au

Bruthen Recreation Reserve Facilities – opened and operational

On May 17 the new facilities at the Bruthen Recreation Reserve were officially opened. To start proceedings Kiah Hood, one of the local Bruthen Netball players, gave the Welcome To Country. Chair of the Committee of Management for the Recreation Reserve James Nicholas welcomed all those present, and thanked them for braving the blustery and wet conditions. He acknowledged some of the invited guests who played a role in the development of the new facilities. Official guests present included:

- Megan Dennet (from Emergency Recovery Victoria, Senior Recovery & Resilience Officer),
- Tracey West (Recreation Reserve Land Manager at DEECA).
- Representatives from the East Gippsland Shire Council: CEO Fiona Weigall, Mayor Councillor John White and Councillor Arthur Allen.
- Lara Capylin from the Gippsland Community Foundation.
- Bob Yeates from East Gippsland News
- Luke Priestley representing Built QA (the building contractors)
- Ray Gallagher from the ODFNL and
- Judi Buhagair from Netball Victoria

The history of the project started with Lucy Leeming from the Bruthen Netball Club approaching the Reserve Committee of Management to see about the possibility of converting the old tennis courts to another Netball surface due to the expansion of teams in Bruthen. The additional Netball Courts were certainly needed – but just as important were change and shower facilities to match court redevelopment. Hence the project was born in its infancy. It was the 2019/20 bush fires that would be a catalyst for the funding that would lead to the new facilities.

Bruthen was fortunate enough to be allocated funding from the Local Economic Recovery Program with funds from the State Government through Emergency Recovery Victoria. With input from the clubs and the Committee of Management a concept was developed for facilities that would not only serve the clubs during the normal passage of time – but allow for surge capacity to be realised if ever required again for emergencies. To achieve this the Committee had to ensure facilities were multi-faceted. Apart from providing for home and visiting sports teams, facilities could be switched to accommodate CFA Strike Teams or Forest Fire Management Fire Fighters when the need arose.

When the project commenced, the funded total faced challenges relating to increased costs associated with materials for the project (a result of pandemic-induced building inflation). The change facilities which were originally costed by engineers at about \$650,000.00, saw increases of

approximately \$340,000.00. Project rationalisation was undertaken with local contractors BuiltQA and the Reserves Building Design Engineer Tom Hardy (also on the Committee of Management), to ensure that key project outcomes could be delivered. With project rationalisation, one of the key items initially to be placed on the back burner was the construction of the Community Storage Sheds (which would double as storage for emergency service organisations when required). But Gippsland Community Foundation came to the fore and ensured that the Community Storage Sheds were able to be completed. The entire project totalled just over \$1.279 million dollars. Pleasingly, the project will be delivered under budget by about \$5-600.00. Finally, the role of East Gippsland Shire Council was acknowledged. As part of ensuring resilience and preparation for future emergencies (bushfire or drought) the EGSC facilitated the placement of a refillable 100,000-litre water tank connected to a bore, a project run by Southern Rural Water. This tank equates to about 33 CFA tankers worth of water for bush fire contingencies, and in times of declared drought the water can also be used by local farmers for livestock.

Mayor, Cr John White acknowledged the work undertaken for the community-run project and what it means for the future of small towns such as Bruthen and the surrounding district.

To conclude proceedings the Mayor officially opened the newly-named *Brenda and Neil Streeter Tennis and Netball Courts*. This was in recognition of the Streeters' contribution of over 40 years involvement and committee work undertaken at the local clubs that use the Reserve (Football, Netball, Cricket and Tennis); as well as their tireless work on the Recreation Reserve Committee of Management.

Bruthen Inn Hotel



Kitchen is open 7 days

Lunch 12-2pm (excl. Tues) Dinner 6-8pm

Tuesdays open from 5pm

Friday night raffles supporting local sporting clubs—10 draws.

Catering for private functions and community meetings

Courtesy bus operates Wed, Fri, Sat nights only

For enquires or bookings contact Bruthen Inn Hotel.

Cheers and beers, Stretch

Phone (03) 51575201

Festive Winter Happenings in Bruthen

Winter brings on the cold short days and it's here! Join the Bruthen Arts and Events Council crew at one or all of the great events we have planned for Bruthen.

June 7 9.30-12 and June 12 5pm-9pm:
Lantern Making workshops. Mechanics Hall.
Come and make a lantern to be paraded at the Medieval Winter Fire Festival or Lakes Lights.

June 14 11am:

Bruthen's Got Talent is back — and it's going to be bigger, brighter, and more inspiring than ever!

A talent quest with a special focus on supporting young people and inexperienced performers, giving them a safe, positive environment to build confidence, express their creativity, and connect with the community. Hosted by our home-grown MC, good 'ol Mrs. Ropplebottom who is sure to give the audience some laughs, this is a fun event that encapsulates the renowned Bruthen creative spirit. Participants of all ages and backgrounds are encouraged to step on stage and "strut their stuff" — whether it's singing, dancing, reciting poetry, or playing an instrument. Age categories ensure that everyone is celebrated, with fabulous trophies and

prizes.

There's more than just talent on show — attendees can enjoy a FREE BBQ, lively entertainment, and a true sense of Bruthen's resilient community spirit. Entry is by gold coin donation, and performers \$5.

June 21: 3pm to 9pm

Medieval Winter Fire Festival is on again.

Community members are encouraged to rug up in their best Medieval costumes and come on down to enjoy a chance to step back in history. Lots of sword fighting, skill demonstrations, indoor and outdoor games, live music, a medieval dance performance, an exciting fire act, costume competition and great food. \$10 for adults and kids under 18years free.

July 14:

The Passion of Saint Nicholas cabaret show.

7pm at the hall or 5.30pm if you book for the Christmas in July dinner. Dinner and Show \$55 or show only \$20.

July — date to be confirmed.

Art Collective launch

We can't announce where the Art Collective is going to be but we can tell you that it will be starting up with one session per week being a social evening where you will be able to come along to create and enjoy the company. A second session each week will be for beginners to learn some basic skills with practicing artists. More news soon.

Keep an eye on the Bruthen Presents facebook page for updates to any of these activities. The Art Collective has it's own facebook page. Web page www.baec.com.au



DO YOU HAVE DEVELOPMENT IDEAS?

TALK TO THE TEAM AT DSV!

Our team is highly experienced, passionate and ready to help you make your project dreams a reality, from concept development to completion.

Call us today for all your planning needs.

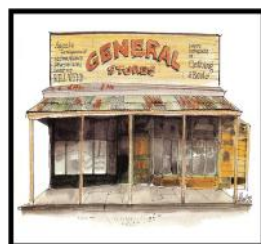
admin@devsolvc.com.au | 48 Bailey Street, Barmstade | (08) 5152 4858

DEVELOPMENT SOLUTIONS

**54 Main Street,
Bruthen.**

Open 7 days

Ph: 03-51575 415



- Supplier of groceries, fresh fruit & vegies, hardware, fishing supplies and basic newsagency.
 - Beer, wine, RTD cans and ice.
 - Swap & Go BBQ Gas bottles.
- Shop local – support local employment
email: BruthenGeneralStore@gmail.com

CALABRO BUILDERS P/L

DANIEL CALABRO New Homes - Renovations - Extensions

Mob. 0407 524 256 calabrobuiders@aussiebb.com.au REGISTERED Building Practitioner

Specialising in new home builds – extensions – renovations – bathrooms – pergolas & decks.

Registered with over 35 years of experience – your local & trusted builder.

Obligation free quote – call Daniel on 0407 524 256.

Volunteering at the Bruthen Op Shop

My name is Tess Roach and I am in Year 6 this year. During term 1 and 2 this year I have been volunteering at the Bruthen Op Shop every Saturday as part of my community service for the Junior Rotary Award.

The Rotary Award is open to all students in year 6. To achieve the community service part of the award I needed to volunteer my time for an hour a week for 10 weeks helping others in my community and learning about volunteering and community service. Every week I wished I could stay longer, as an hour was not long enough and 10 weeks was too short.

During my time at the Op Shop the volunteers taught me a lot about what they do, and I was surprised to see the same people there most Saturdays helping out and they were always happy to see me. I met many of the volunteers past and present and regulars dropping off items. It is a very busy place on a Saturday at lunchtime.

I learnt all about what was good to resell and what was not and why. After a couple of weeks of volunteering I was shown how to use the till and help customers which was scary but exciting at the same time. I was so surprised when someone wanted to pay with their watch as I had not seen that before.

One of the surprising things about the Bruthen Op Shop was how they send items they do not need, or that aren't selling to other Op Shops that need items of a particular type. Clothing is very seasonal and there was even a pop-up Op Shop at Buchan and a Jumble sale as the season changed from summer to autumn to move items on. They get so many donations and it is really great that what they cannot use gets shared with others who need it.

The volunteers hate throwing things out but occasionally they get dirty items or clothing that are not in a condition to sell. Even I had to throw a few items away which I did not like doing. The items would have been okay if they had been donated in better condition. The shop has good recycling programs for shoes and other items. Some items that can't be sold get picked up by others in the community for reuse and recycling.

I have really enjoyed volunteering at the Op Shop and I think more people should give it a try. Volunteering is fun, you can meet many new people, and help the community. When I finish the other parts of my Rotary Award and have some spare time I hope to come back and help the volunteers again.



Bruthen Explores Community-Owned Assets: A Bold Step Toward a Stronger, Self-Sustaining Future

Bruthen is stepping into a new era of possibility, one where locals take the lead in shaping the town's future through community ownership of land and buildings. In an inspiring move, the Bruthen and District Citizens' Association, in collaboration with the Bruthen Community Recovery Committee, has launched a free community program aimed at exploring opportunities for community asset ownership — with the much-loved Bullant Brewery as the initial focus.

At the heart of the initiative is the belief that communities thrive when they have control over the assets that matter most to them. Whether it's a town hall, green space, pub, or cultural venue, community-owned assets can act as engines of local enterprise, pride, and resilience.

The program is being hosted by the Australian Centre for Rural Entrepreneurship (ACRE), a national leader in supporting rural communities to build sustainable futures. ACRE brings extensive experience to the table, having successfully led the community-led purchase of the Old Beechworth Gaol in 2016 — a landmark project that transformed a historic site into a hub for innovation and community enterprise.

Join the Conversation

Community members are invited to get involved in two key events:

Online Meet & Greet – Tuesday, June 10, 6 to 6:45pm

Join ACRE for an online introduction to the program and its potential for Bruthen. Hear what locals have already shared, and learn how you can play a part in shaping what comes next. Zoom ID: 845 5359 5601 | Passcode: 897165 Can't attend? Request a recording by emailing evagrunden@bigpond.com

FREE Community Workshop – Sunday 29 June, 10am–1pm at Bruthen Hall.

ACRE will host a free in-person workshop exploring how community asset ownership works, the different models available, and real-world examples from across Australia and beyond. A light lunch will follow, giving locals a chance to connect and continue the conversation.

RSVP to evagrunden@bigpond.com

Why Community Ownership?

The idea of community asset ownership has gained traction globally, particularly in the UK and Europe, where governments have enacted legislation and funding schemes to support communities in taking charge of the buildings and spaces that shape their everyday lives. In Australia — and especially in rural areas — the movement is still in its early days.

That's where ACRE comes in. Their "Exploring Community Asset Ownership" program is designed to help towns like Bruthen understand what's

possible, assess their readiness, and make informed, community-led decisions. Through virtual conversations and place-based workshops, ACRE helps communities reflect on their unique character, strengths, and vision.

Backed by Local and Government Support

This project is proudly supported by East Gippsland Shire Council, and jointly funded by the Victorian Government and Commonwealth Government under the Commonwealth-State Disaster Recovery Funding Arrangements. It aims to support disaster-impacted communities in building long-term resilience through new and inclusive economic models.

Be Part of the Future

This is more than a consultation — it's an invitation to shape Bruthen's future. Whether you're passionate about preserving local heritage, creating new opportunities for young people, or simply want to see Bruthen flourish, your voice is needed.

To learn more or get involved, reach out to Eva Grunden at evagrunden@bigpond.com. Let's explore what's possible — together.



BRUTHEN'S GOT TALENT

Saturday 14th June 2025

Bruthen Hall

11am

**AGE
CATEGORIES**

**Inclusive,
friendly event
for EVERYONE!**

**GREAT
TROPHIES
AND PRIZES**

FREE BBQ

**Gold
Coin
donation**

Enter at the Bruthen Arts & Events Council website - baec.com.au



This Event was generously funded by the State of **Victoria** through Emergency/Recovery **Victoria's** grant program in response to the Black Summer Bushfires which impacted Victorian communities in East Gippsland.





Bruthen artists featured at Lindenow Art Exhibition

This exhibition showcased 52 artists with over 150 multi-media exhibits – painting, sculpture and textile art, together with a multitude of craft stalls filling the Lindenow Hall, with other stalls in the car park.

I am sure the beautiful autumn weather helped promote this wonderful event as it was so well attended and the atmosphere was one of such enjoyment, accentuated by music provided by a harpist and 'Crescendo', a group of young musicians.

Bruthen was well represented with works by Elena Dickman, Lauren Manley, Heather Rose and Jon Whitfield being exhibited.

It is hard to believe that this biennial art experience,

which has been going in one form or another for over 20 years, is organised and run by just four dedicated volunteers. This is an event worth keeping a look out for in 2027.

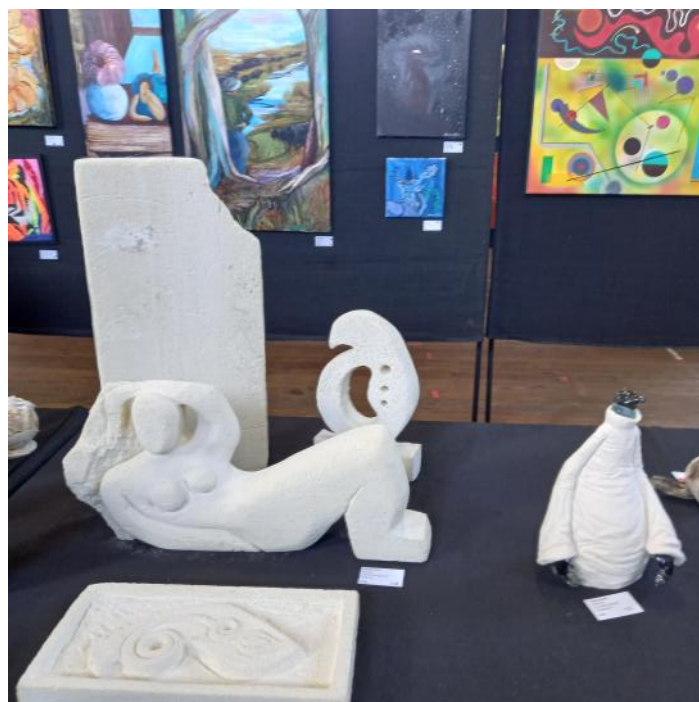
Heather R

Top Left: Elana Dickman.

Top Right: Margaret Lomas.

Bottom Left: Lauren Manley.

Bottom Right: Heather Rose.



Penny Carruthers & Scott Sheil showcased at Briagolong Art Gallery

A fantastic exhibition well worth the trip to Briagolong is currently running at the Art Gallery, showcasing works by well known multi-disciplinary artist Penny Carruthers of Cowra and local Tambo Upper sculptor, Scott Sheil.

Penny's beautiful works in graphite and charcoal on paper and canvas from the 1980s to 2000 express her empathic connection to portraiture and figurative drawing. Scott has delivered elegant, abstract limestone sculptures based on nature, together with 'The Sleeper Series' - Seven imaginative, stylised works which explore the complexities of sleep.

Immediately on entering this natural light-filled gallery I was aware that the limited palettes of black, white and limestone link the two artists harmoniously,

allowing the eye to wander easily between the works without the distraction of colour. Form, line and subject flow.

I attended the opening on May 18, which was a relaxed, friendly occasion attended by about 50 people and again a few days later, when I enjoyed the opportunity to view without distraction and I did not want to leave!

(If you do go please make sure to read each artist's statement on the wall as you enter - enlightening)

Thoroughly recommended.

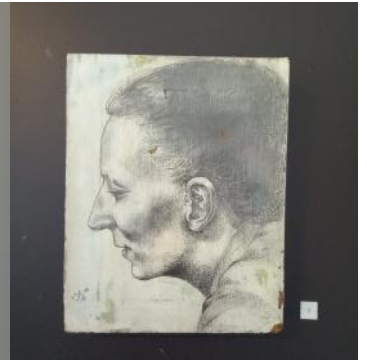
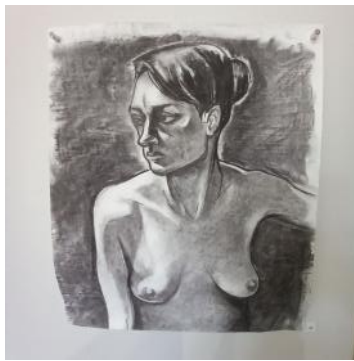
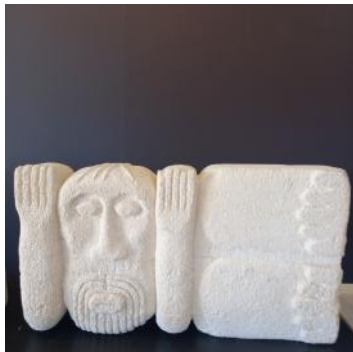
Open Sat & Sunday 10am – 3pm

Briagolong Arts Gallery until June 22 this year.

Cnr Avon & Forbes Rd

See selected works below.

Heather R



New art at the Bruthen Village Maker and Gallery in June

Local artists Blazenka Lesinger and Ingrid Smith-Rijneveld are exhibiting in soft pastels, acrylic and some archival prints with a selection of original mono print cards.

Ingrid is a Bairnsdale artist who takes inspiration from the East Gippsland landscape, seascape and botanical subjects and has won several awards for her work which can also be found in the East Gippsland Art Gallery shop. She opens her studio to the public every few years and is a member of the

Bairnsdale Art Society.

Blazenka Lesinger is a contemporary artist from Paynesville. Art, design and the love of beauty in its many forms have always been constant and she takes her inspiration from flowers and natural forms.

All welcome to view in the gallery space Thursday - Sunday 10am - 4pm at Bruthen Village Maker, 61 Main Street, Bruthen.

Some snapshots of Bruthen History from The Weekly Times December 1897

MESSRS JOHN MITCHELL AND CO'S COACH LINE

Messrs John Mitchell and Co.'s coach line is one of the best coach services in the colony of Victoria. The journey covered is that from Bairnsdale to Omeo, a distance of 81 miles. To accomplish this three stage coaches are kept on the road, and 46 horses are in work. The horses are changed four times between Bruthen and Omeo. There are stables and grooms at each stage, and three drivers are on the road at one time. Tourists who travel the colony over have frequently remarked on the fine stamp of horses kept on this road. The road to Omeo forms the direct route to Glen Wills, while coaches leave the track for Buchan and Orbost. At Bruthen Messrs Mitchell and Co. keep a staff of farriers and coachbuilders busily at work shoeing horses and building and repairing coaches. The whole business is excellently managed, and the passenger who has the horror of a long journey by coach will find the 81 mile track from Bairnsdale to Omeo, on Mitchell and Co.'s line, is one of the most enjoyable drives obtainable in Victoria.

MR SAMUEL E. TERRILL

Mr Terrill is a saddler, who has been in business in Bruthen for about five years, and is doing well. He has been in the saddlery trade in the same district for about 15 years, and has, while in the employ of other tradesmen, turned out work which has gained first prizes at several agricultural shows. He keeps a fine and attractive stock of saddlery and harness, and superintends the manufacture of the whole of it, for he explains that he has not to depend upon the patronage of storekeepers, but has to turn out bona fide work which he can depend upon to gain him a good name.

FREGON'S STAR HOTEL

The Star Hotel, at Bruthen, is on the main road, 16 miles from Bairnsdale. The traveller to Omeo or Glen Wills mounts the coach at Bairnsdale in the evening, and the Star Hotel is the conclusion of the first stage of his journey. The coach pulls up at the hotel, and a good dinner is always ready for the traveller, as well as large, well ventilated, and comfortable rooms. The hotel is a brick two storied building, with a balcony, and containing 25 rooms, which are at the disposal of travellers. Two dining rooms are kept, and two scales of charges are made. There are accommodation paddocks for travelling stock,



horses, etc., and special buggies or coaches are supplied if required. The Omeo coach leaves every day, and the Buchan and Orbost coach also call.

O'KEEFE'S ROYAL MAIL HOTEL

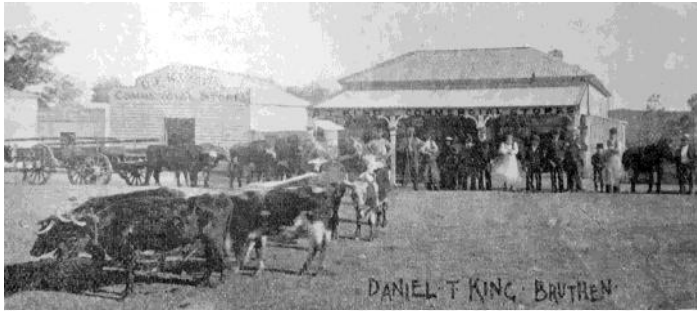
The Royal Mail Hotel is a well-kept and convenient establishment, situated in the main street of Bruthen, at the far end of the town. Coaches from Orbost, Buchan and Omeo to Bairnsdale pass the door. Mr O'Keefe, the proprietor, has been a resident of the district for 24 years, and for four years he drove the Buchan coach, so that he is well primed with information both concerning the mining and agricultural resources of the district, and is a useful man for prospectors and visitors to meet. The Orbost and Buchan coaches leave the Royal Mail Hotel.

MR DANIEL T. KING

Mr King is a public-spirited man, who carries on the Commercial Store in Bruthen on enterprising lines. He has been in the business for a number of years, and for a considerable time has been known throughout the whole of the North Gippsland district. He was 10 years in charge of the grocery and wine and spirit department at the Commercial Stores, Bairnsdale, and has also been in business in Sale and Rosedale. For the past six years he has been located in Bruthen, and is now recognised as one of the leading citizens. As a proof of this, his fellow townsmen recently sent him into the local council as their representative, by a majority of two to one over an old councillor. Mr King has always been at the forefront of the mining development of the district, and was one of the six promoters of the Golden King, at Sheep Station, near Brookville. This mine gave the handsome return of 24³/₄oz. per ton from 11¹/₂ tons. The greatest portion of the miners' supplies in the district are supplied by Mr King, and it is no unusual thing to see as many as six bullock teams in front of his premises, waiting for supplies for the goldfields.

Thanks to Deb Squires, President, East Gippsland Family History Group.





Community Focused & Community First: Bruthen Fire Brigade



With recent political events in the State regarding the introduction of the Emergency Services Levy (ESL) - the Bruthen Fire Brigade wishes to advise (not just in relation to its own members - but other Brigades), that it respects individual member and Brigade rights, to react to the ESL as they see fit. Such reactions may be in the form of formal protest, taking appliances offline and in some instances members choosing to no longer remain with the CFA.

Unequivocally, the Bruthen Fire Brigade sees the ESL as an unjust, unfair, ill-conceived and inequitable burden on Victorians. Regardless of whether you are a fire fighter, involved in another emergency service, a farmer or tradie, landowner of any persuasion etcetera; it is our opinion that the ESL unfairly targets Victorians - for mistakes the

Victorian Government has made and are of their own doing. We could go on and on and on about how and why.....but for us a key point remains: community safety comes first and foremost in our decision to keep responding to emergencies as they occur.

Accordingly, the Bruthen Fire Brigade will not be taking its fire appliances or the Brigade as a whole, offline. We remain community focused. As a Brigade we still have concerns regarding the introduction and implementation of the ESL - but we will address these through our chain of command as they arise. Good news also is that many of the Tambo Group of Fire Brigades have elected to remain in service of the community while we navigate the many unknowns of this unfair levy.

James Nicholas, Captain Bruthen Fire Brigade

P F W Z W N E L D H W K V D H
 M A P E J G E N A O I E F R I
 P R K V A L H K C V O Z L O S
 Y M O L R O M S C X E W Q L T
 Q L L V L Y O C A I I I T X O
 V I L I L O O W H V H W D D R
 V C D H U J L F K U A C H E Y
 J A K N I G H T F I R E O Y M
 Y F X L J Z A I M S N C Y D P
 J G Q D T A I L O R F G H E Y
 H W A M T E L B O N T Z A L Q
 O C C U P A T I O N T S W L F
 O V L H T I M S K C A L B I A
 E U V M F Q C X P N C N Q K R
 Q F O X W S A M T I E D P S I

MEDIEVAL

LORD

COW

TAILOR

KING

FARM

HOLIDAY

NOBLE

CHICKEN

LOOM

VILLAGE

KNIGHT

CHURCH

HISTORY

PEASANT

WOOL

WOOD

SKILLED

OCCUPATION

BLACKSMITH



Target Words

How many words of four or more letters can you find? Every word must use the centre letter, and each letter can only be used once. And what is the 9-letter word?

A	R	E
N	E	T
P	C	R



Medieval Times: How did the common people live?

The Medieval era, or Middle Ages, is a period in European history from about 500 A.D. to 1500 A.D. We'll have a quick look at how the peasants lived in England during that time (it's a long period of course, so there were plenty of changes, but we're just going to keep it simple).

Imagine society at that time being something like a pyramid: at the top is the king, just below him his nobles, or lords. Then come the knights. But most people (making up the biggest part of the pyramid by far) were peasants who lived in the countryside and worked the land as farmers for the local lord.

Now while the lord lived in a large manor or castle, the peasant family lived in a simple hut of one or two rooms. It was built of wood or wicker daubed with mud, with a thatched roof made of straw or reeds. Part of the inside might be penned off for the family's animals: a cow, some chickens, a pig perhaps. A fire would burn in a hearth in the centre of the room, so the air could get quite smoky. There might also be a wheel for the women to spin wool, and perhaps a loom for weaving cloth. Things could get crowded!

Life could be really tough, but there was also time for fun games, music, dancing and entertainment at fairs and church festivals on holy days (holidays!).

Kids could get into ball games, hopscotch, hide-and-seek, skittles and other activities that we still know. Towns were growing, though they were small by today's standards. There were many traders and skilled craftsmen working in the towns, such as blacksmiths, carpenters, metalworkers and tailors. (The skills carried down from such workers and more will be very evident in the gear and costumes on show at Bruthen's Medieval Festival.) And many common surnames of today are derived from medieval trades and occupations.

Your Challenge: See if you can identify what kind of work was done by people bearing these surnames*: Taylor, Fisher, Fowler, Wright, Wainwright, Smith, Goldsmith, Collier, Clarke, Fletcher, Baker, Tanner, Carter, Chandler, Chapman, Miller, Hooper, Cooper, Cooke, Mason Can you add more?

** Some names are trickier than others. You'd get Shepherd or Shephard right away, but others need a bit of help. You could Google, say, 'Fletcher surname' and see what comes up.*

Chester returns to Senior Role in Coalition

Federal Member for Gippsland Darren Chester says he's 'honoured and excited' to be returning to a more senior role in the Coalition as the Shadow Minister for Veterans' Affairs.

Mr Chester said he was looking forward to the challenge of representing the interests of veterans and their families while participating in broader Shadow Cabinet deliberations.

"It is a challenging time in our nation's history, and the conversations we will need to have in Shadow Cabinet will require maturity, common sense and a practical understanding of how government decisions can impact the lives of everyday families in our cities and regional areas," Mr Chester said.

"We need to quickly learn the lessons from the federal election result and unite as a Coalition to hold the government to account, in the interests of the people who send us to Canberra to represent them.

"The Labor Party machine is good at campaigning but not so great at governing, with our rural, regional and remote communities bearing the brunt of policies which have ignored our needs.

"All of the issues that existed prior to the election remain areas of concern for Australians. Everything from cost of living, increased crime, crumbling infrastructure, poor access to critical services and global uncertainty will require clear-thinking and decisive action."

Mr Chester said his return to the veterans portfolio after serving as a Minister for 2018-2021 would allow him to focus on the wellbeing of all service personnel and their families, including the implementation of key recommendations from the Royal Commission into Defence and Veteran Suicide.

"It was the greatest honour of my working life to represent veterans and defence personnel within the Ministry, and I recognise it is one of the portfolios where you can actually make a difference and sometimes save people's lives," Mr Chester said.

"Our veterans and their families have helped to keep



us safe and protected the freedoms we all enjoy today, and in return, we need to provide assistance, if it's required, once they have left the defence force.

"Wherever possible, I will be working in a bipartisan manner in the interests of the men and women who have served because support for our veterans should be above day-to-day politics.

"We have a world-class and highly respected Australian Defence Force. We should be proud of them.

"Our capability edge in the ADF is our people. Obviously, we need to keep investing in the equipment to allow them to undertake their task, but it is their skills and the training they receive that sets them apart.

"Whether it's during conflicts, peacekeeping missions, or humanitarian aid and disaster relief, they need to be well-prepared and well-equipped to do their jobs. Our ADF personnel are respected for their capabilities and the manner in which they undertake difficult tasks at home and abroad.

"The majority of ADF personnel will serve our nation with distinction and transition successfully to civilian life and a new career.

"But it is a job which comes with inherent risks of death and injuries, and as the Veterans Covenant states, 'for what they have done, this we will do'.

"As a grateful nation, we are obliged to support our veterans if ever they need assistance from the Australian Government."

Mr Chester said he was also looking forward to the completion of the major redevelopment of the Australian War Memorial, which was funded by the previous Coalition Government, and considering more options for commemorative activities in rural and regional areas.

"The AWM is not only a museum... it's a place that holds the stories of service and sacrifice which have helped to define our nation's values and identity," Mr Chester said.

"As much as possible, we need to expand that work to maintain the cenotaphs, memorial halls and historic military sites that exist in Australia and throughout our region."

A campaign graphic for Darren Chester. On the left is a portrait of him smiling. To his right, the text "Darren Chester" is in large green font, with "Putting Locals First" below it in smaller green font. Below that is the hashtag "#lovegippsland" in green. To the right of the text is a circular logo that says "100% AUTHENTIC GIPPSLANDER" and lists "GUNAHEKURAI COUNTRY" and "LATROUSE VALLEY WOLLAMOOTHE BART GIPPSLAND". At the bottom left is the "iNATIONALS for Gippsland" logo, and at the bottom right is the website "www.darrenchester.com.au".

Bruthen - Bairnsdale Bus Timetable Dysons Bus Lines Ph: 5152 1711

Bruthen to Bairnsdale Morning	Monday & Friday AM	Tues, Wed, Thurs AM
Bruthen (opp) General Store	08:10 am	09:50 am
Bairnsdale, Corner Main & Bailey St	08:30 am	10:20 am
Bairnsdale Train Station	08:35 am	10:30 am
Bairnsdale to Bruthen Afternoon	Mon to Thurs PM	Friday PM
Bairnsdale Train Station	1:25 pm	3:40 pm
Corner Chemist (Service & Main Street)	1:30 pm	3:45 pm
Bruthen, Station & Great Alpine Rd	2:00 pm	4:15 pm

EAST GIPPSLAND
SHIRE LIBRARIES

Mobile Service Centre / Library Bruthen (Main St)



What can you do at this mobile service centre?

- Borrow books, CD's, DVD's, audio books and more
- Pick up a Council newsletter and subscribe
- Lodge a report or request
- Pay an account / make electronic payments
- Make enquiries, collect and lodge application forms
- Register your dogs and cats
- Access and complete surveys
- Learn about and provide feedback on projects in your community
- Use a computer with free internet access
- Have a chat and much more

Wednesdays
Fortnightly
11.15am - 12.30pm
Fortnightly

Jan 8th & 22nd
Feb 5th & 19th
Mar 5th & 19th
Apr 2nd, 16th & 30th
May 14th & 28th
Jun 11th & 25th

Phone **5153 9500** with
any queries about
the service.

LIBRARIES
Change Lives

GLCH Services @ Bruthen

GP Clinic

- Available Wednesdays by appointment only.
- Ensure your appointment is scheduled in Bruthen.

Community Health Nurse

- Available Mondays and Wednesdays.
- Fees apply, but no one will be denied service due to inability to pay.

Maternal & Child Health

- Available once a month on a Tuesday by appointment only.

Pathology Collection

- Open Mondays and Wednesdays, 8:30 AM to 11:00 AM.
- Nurse fees apply.

Room & Bus Hire

- Available for bookings.

Booking and Contact Information

Call 5155 8300

- For GP Clinic and Community Health Nurse appointments, select Option 1.
- For Room and Bus Hire, speak with our Customer Service team.

Learn More

- Visit: glch.org.au
- Follow us on social media!



Tim BULL MP MEMBER FOR GIPPSLAND EAST

*Servicing Bruthen and
district community.*



143 Main Street, Bairnsdale VIC 3875
03 5152 3491
tim.bull@parliament.vic.gov.au

Funded from Parliamentary Budget

Pets Corner

Fred is an 11 year old Ragdoll cat with beautiful blue eyes.

He had a rough start to life being the only surviving kitten from the first litter of a breeding pair. This prompted the owners to rethink breeding cats, and they closed the business.

Fred was adopted by the owner's mother, and had three happy years until the lady went into palliative care.

Fred went back to his first owners and was kept in a shed for two years with limited interaction from the family due to the arrival of a baby.

Pets do adjust to a new family member, and children benefit from growing up with pets.

A tradie working on the property saw the plight Fred was in so offered to take him home.

Sadly, the cat he already had didn't get on with

Fred.

Finally Fred was adopted by Marg Pearson, whose cat had recently passed away.

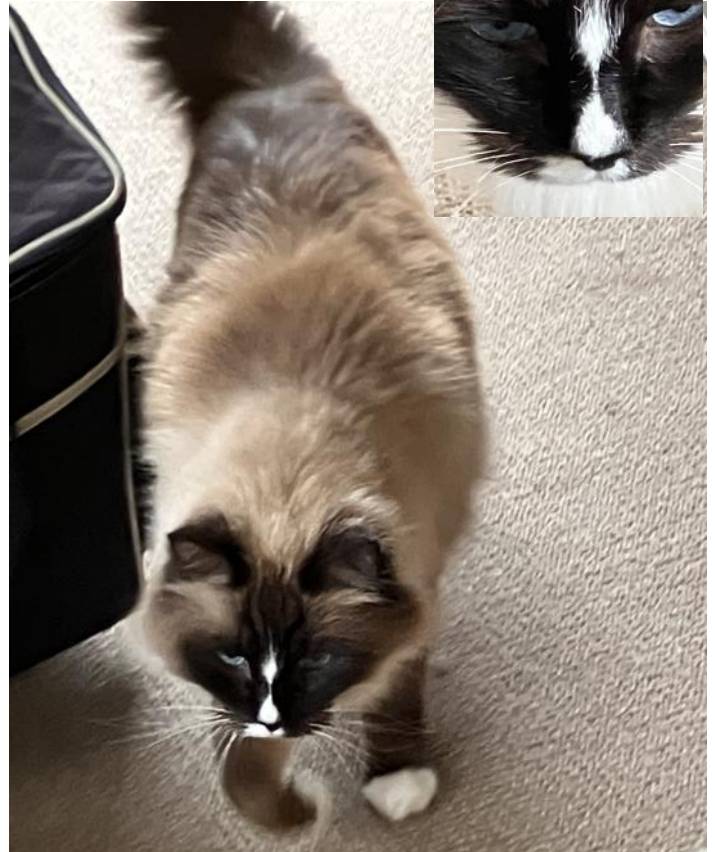
Marg's cleaner knew the tradie and that Fred needed a new home.

Fred has now been with Marg for three years and has certainly landed on his paws.

He is a lovely friendly cat totally loved by Marg.

Eventually a happy ending!

Kath G



Bruthen Licensed Post Office

Photocopying
Scanning /
Emailing
Documents



(Est.1893)

Fax
Service

Bill payments, Banking deposits & withdrawals, Western Union, Stationary, Wrapping Paper, Gift & Greeting Cards, PostPak & Australia Post Postal Services.

Howard & Jenny Young, Phone/Fax (03) 5157 5209



AED

IN AN EMERGENCY



AED

Bruthen has Heart Start Defibrillators

Located at:

Bruthen Bowls Club (on the veranda)

Note: accessible 24/7 (under video surveillance)

Bruthen General Store

(7days during business hours)

Bruthen Rec Reserve

(for sports events / caravan park)

Bruthen & District Neighbourhood House

(during business hours)

Bruthen Fire Brigade

(on responding appliances & in the station)

TRADES AND SERVICES

Bruthen Garden Supplies

NOW OFFERING WATER CARTAGE

• 13,000L WATER CARTAGE.

• DOMESTIC & GENERAL 7 DAYS

Tip-trucks 6m³ & 10m³, Bobcat, Excavator,

Post Hole Boring, Trenching, Slashing.

SUPPLIERS OF SAND, SOIL & MULCH



WE NOW SELL CHOOK PELLETS

ALL AREAS



76 Main St, Bruthen

M: 0429 944 297



C13151

Bird of the Month: Jacky Winter

The Jacky Winter is a small grey-brown bird from the Australasian robin family with a more subdued appearance than some other robins. Males and females are very similar in their pale grey, white and brown plumage. They have a faint pale eye-line, a white underbody and a dark tail edged with prominent white outer feathers, noticeable when perching with a wagging tail. Widely distributed in mainland Australia and SE New Guinea, their colour is darker in southern regions and paler in the far north and inland areas.

The name Jacky Winter relates to their rapid vocalisations which sound like “*jacky-jacky-winter-winter*”. Other names attributed to this small bird are Peter Peter which also refers to the song sounding like “*peter-peter-peter*”, and Brown Flycatcher which was commonly used in post-colonial times before Jacky Winter was accepted as the official informal name in 1926.

Preferred habitat for these small insect-eating birds is open eucalypt and mallee woodlands with open shrub layers and access to open ground. They are often seen where woodland meets farmland, the fences providing handy perch sites. Jacky Winters are acrobatic, often seen darting out to snatch flying insects; they dive and twist, hovering and grabbing at passing prey then return to their perch. They also use a ‘sit and pounce’ tactic where they sit on a low perch and dive down to catch food on the ground. They may be seen feeding in pairs, sitting upright on a bare branch, stump or fence, tails wagging and singing their clear and melodious song.

Wooded parklands also offer suitable habitat, although Jacky Winters are sensitive to human disturbance and may become scarce around settled areas. Population numbers have decreased in some areas where land clearing for farming or housing development has reduced habitat security. For example, the Noisy Miner is a competitor that adapts well to human-altered landscapes and is quite aggressive towards other small insectivores such as the Jacky Winter, competing for food and challenging access to nesting materials. The conversion of woodlands to arable land for crops and livestock has reduced grass and shrub vegetation, causing loss of ground-dwelling food sources. Jacky Winters often remain in an area throughout the year with some seasonal movements



Photo by Sue Allison

as visitors to other local areas. This sedentary behaviour increases their vulnerability when habitat is cleared. However, restoring habitat by revegetation can protect the local fauna and flora diversity including the bird populations.

Breeding season is from July to December. Small cup-shaped nests made from grass and strips of bark bound with spiders’ web are built in an exposed position such as a dead branch. The breeding pair may raise several broods in a season.

Birdlife East Gippsland welcomes visitors and newcomers.

Birdlife East Gippsland meets weekly from 9am to 12pm on Mondays, including a tea break. New members and visitors are always welcome. The annual schedule of outings across the region ensures diverse locations and interesting bird observing. The records collected are submitted to the national database.

BYO refreshments & water; wear appropriate clothing, boots and sun protection. Binoculars are handy. Planned outings may be affected by regional weather and emergency warnings or environmental conditions. If unsure, please check via Birdlife East Gippsland Facebook page or email.

eastgippsland@birdlife.org.au



June 2025 Outings Schedule

DATE	LOCATION	9AM MEETING PLACE
June 9th <i>King’s Birthday Public Holiday</i>	Wairewa.	Cnr Princes Hwy & Wairewa Rd. Wairewa.
June 16th	Healey Property, Clifton Creek.	110 Bellbird Rd. Clifton Creek.
June 23rd	Tambo Bluff & Tambo Bay.	Cnr Metung Rd. & Hardy’s Rd. Metung.
June 30th	Jones Bay-Phillips Lane/The Cut.	Car Park @ end of Phillips Lane, Bairnsdale.

TAMBO RAMBLER

Tambo Rambler Advertising Costs

BLACK AND WHITE Advert Options

- ⇒ 9 x 5 cm - **Cost \$15.00**
- ⇒ 9 x 8 cm - **Cost \$20.00**
- ⇒ 1/4 page - **Cost \$25.00**
- ⇒ 1/2 page - **Cost \$50.00**
- ⇒ Full page - **Cost \$100.00**

COLOUR Advert Option 1: Full Page

- ⇒ One full page, full colour feature / advert placed on the inside cover of the Tambo Rambler
- ⇒ Plus acknowledgement as the major sponsor for that month's edition of the Tambo Rambler
- ⇒ **Cost - \$165 per edition**

COLOUR Advert Option 2: Half Page

- ⇒ One half page, full colour feature / advert placed on the inside cover of the Tambo Rambler
- ⇒ Plus acknowledgement as the sponsor for that month's edition of the Tambo Rambler
- ⇒ **Cost - \$100 per edition**

COLOUR Advert Option 3: Quarter Page Full Colour Promotional Package

- ⇒ One quarter page, full colour feature / advert placed on the inside cover of the Tambo Rambler
- ⇒ Plus acknowledgement as the co-sponsor for that month's edition of the Tambo Rambler
- ⇒ **Cost - \$65 per edition**

Closing date for July issue is June 25.

Please send your articles by e-mail only to:
tamborambler@gmail.com

(Word, Publisher, JPG or PNG format with photos please
PDF format will also be accepted.)

Tambo Rambler is distributed across East Gippsland via email and on the web page at

<https://bruthendistrict.org.au/tambo-rambler/>

We also distribute to Government representatives, Bairnsdale Library, Victorian State Library, and local Historical Societies

Hard copies are available in Bruthen at the P.O, General Store, Oppe Shoppe, Bakery, Blue Bee, Hotel and Neighbourhood House for a gold coin donation.

The Tambo Rambler Committee and BDCA do not take responsibility for opinions expressed by contributors to the Tambo Rambler. The Editors reserve the right to reject articles and advertisements and to edit submissions if necessary

All submissions must carry the author's full name, address and phone number. They may be published anonymously if preferred.

FRRR awards grants for three local projects

The Foundation for Regional And Rural Renewal has awarded over \$1 million to 101 projects including three local projects from Tambo Upper, Mallacoota, and Buchan. More details on these to follow in a later issue.

These grants will support 81 'small and vital' projects, like community events and festivals, training and workshops on topics such as online safety, local biodiversity and financial literacy, and additional resources to support volunteers.

Another 18 grants have been awarded in regions impacted by disasters, with projects addressing recovery and preparedness concerns such as food security, disaster refuges, crisis event coordination, community mental health and social wellbeing. Two 'larger leverage' grants will enable NFPs to provide digital solutions that strengthen their community's disaster resilience and recovery.

Jill Karena, Head of Granting at FRRR, said rural people want their communities to be places that future generations choose to call home.

"Rural people know that for a thriving future, they need to be able to access services and opportunities like education and employment, social engagement, organisational capacity-building and health services. We're proud to support the people and places that are tackling these issues head-on."

"We trust local people to know what the most pressing needs of their communities are, and what it will take to be socially and economically sustainable. We are proud to work with them to help their communities to flourish and thrive," Ms Karena said. Ms Karena said FRRR is also actively supporting disaster preparedness and recovery.

"Not only are remote, rural and regional communities more likely to experience a disaster, the lack of accessible services, economic resources and risks of greater social isolation all mean that recovery is a long-term and ongoing journey.

FRRR always accepts applications to this program, which awards funds around four times a year. Local not-for-profit organisations and community groups are encouraged to review the program guidelines and apply.

birdlife
EAST GIPPSLAND

**SEA EAGLES
OF
THE GIPPSLAND LAKES**

Biology and Breeding Success

FREE Illustrated TALK

By
Dr Derek Russell
President Birdlife
East Gippsland

**NYERIMILANG
HOMESTEAD**

Sun 6th July
2-3 pm
Repeated 3-4pm
All Welcome

Limited seating. Please confirm attendance
by phone or text to 0425824081

Bruthen's Biggest Morning Tea

On Saturday May 24, Bruthen truly lived up to its reputation as a close-knit community at our recent "Biggest Morning Tea," which proved to be once again nothing short of "Tea-riffic!"

The event was a heartwarming display of generosity and community spirit, with attendees enjoying a morning filled with homemade delicious treats and amazing prizes.

From the overflowing raffle tables showcasing the talents and wares of local businesses to the sheer enthusiasm in the air, the morning was a fundraising success.

Thanks to the incredible support of everyone who baked, donated raffles, assisted with planning and preparation or just got involved.

A substantial amount was raised to support the vital work of the Cancer Council, \$1200 and rising!

Thanks to everyone who got involved for making this year's Bruthen Biggest Morning Tea another one to remember.

Special Thanks to Faye Brooks, Nisa Giacomelli, Pamela Boyd & all the little helpers involved.



\$5 per person Lantern



Decoupage Faux Stained Glass

Wednesday
18th June @
11am
or
Wednesday
18th June @
4pm

Light Up the Night: Create Your Own Jar Lantern for the East Gippsland Winter Festival!

Don't let the frosty nights of the East Gippsland Winter Festival keep you in the dark! If you're missing a lantern for the magical festivities planned across the region, then get ready to unleash your inner artist and join our family-friendly Jar Lantern Workshop!

This hands-on workshop is the perfect way to craft a unique and beautiful lantern using simple materials and a dash of creativity. We'll guide you through the enchanting process of transforming ordinary glass jars into dazzling beacons of light.



call or SMS
0497 544 490

Neighbourhood Houses
The Heart of Our Community

36 Main Street Bruthen

CALLING ALL LITTLE FAERIE AND FOLKLORE FRIENDS

SATURDAY

JUNE
21st

11AM
BRUTHEN
MAIN STREET
GARDENS

JOIN US AT THE BRUTHEN
MEDIEVAL MARKET @ 11AM FOR A
MAGICAL KIDS FAERIE AND
FOLKLORE FRIENDS PARADE

Prizes await the Best Dressed
so let your imagination fly!

Where: Bruthen Village Green

When: Saturday, 21st June

Parade starts at 11am

Free to enter and full of fun!



BRUTHEN'S MEDIEVAL MARKET



21ST JUNE 2025 9AM-3PM BRUTHEN MAIN STREET GARDENS

BRUTHEN IS HOLDING ITS ANNUAL MEDIEVAL MARKET ON SATURDAY 21ST JUNE BEFORE THE FAMOUS BRUTHEN MEDIEVAL WINTER FIRE FESTIVAL!

COME ALONG FOR LOCAL & SPECIALLY SOURCED ARTISTS, MAKERS, GROWERS AND STALL HOLDERS.

FREE ENTRY MARKET FUN FOR EVERYONE 9AM-3PM!

GET DRESSED UP AND ENTER THE BEST DRESSED COMPETITION.

FACE PAINTING FOR ALL AGES. PRIZES TO BE WON!

WINNER ANNOUNCED VIA FACEBOOK - BRUTHEN & DISTRICT NEIGHBOURHOOD HOUSE

FOR MORE MARKET INFO LIKE & FOLLOW B&DNH
INFO@BDNH.ORG.AU

PURCHASE TICKETS TO THE BRUTHEN MEDIEVAL WINTER FIRE FESTIVAL 3PM-7PM LIKE & FOLLOW - BRUTHEN PRESENTS - BRUTHEN ARTS AND EVENTS COUNCIL INC. SWORD COMBATS, FLAMING SWORDS, AMAZING MEDIEVAL COSTUMES, LOTS OF FOOD, TRUCKS, BOMBERE AND FERE POTS, MONKS DANCING AND MEDIEVAL SKILL DEMONSTRATIONS AND GAMES TO PLAY. LIVE MUSIC, DANCING AND MORE...

TICKETS \$10 FOR ADULTS FROM TRYBOOKING.
HTTPS://WWW.TRYBOOKING.COM/DAERN



Bruthen & District
Neighbourhood House

Neighbourhood Houses
The Heart of Our Community

June 2025

BRUTHEN MEN'S SHED
OPEN EVERY MONDAY 9AM-1PM

ALL WELCOME
STOP BY FOR A CUPPA AND A
CHAT AND SEE WHATS ON
OFFER

21
JUN

JOIN US AT THE
BRUTHEN MEDIEVAL
MARKET - MAIN
STREET GARDENS @
11AM FOR A
MAGICAL KIDS
FAERIE AND
FOLKLORE FRIENDS
PARADE - FREE TO
ENTER

10
JUN

BRUTHEN REMEMBERS
LOCAL HISTORY GROUP
10:30AM- 12:00PM
@ B&DNH 36 MAIN STREET
BRUTHEN

24
JUN

**COLOUR &
CREATIVITY ART
CLASSES
FINAL SESSION**

12
JUN

BRUTHEN BOOKIES
HELD ON THE 2ND THURSDAY OF
EACH MONTH 1:00-3:00PM
@ B&DNH 36 MAIN STREET
BRUTHEN

18
JUN

**FAUX STAIN GLASS
JAR LANTERN
WORKSHOPS**
11AM OR 4PM
CALL OR SMS B&DNH TO
BOOK



21
JUN

**MEDIEVAL MAIN STREET
GARDENS MARKET 9AM-3PM**
BRUTHEN IS HOLDING ITS
ANNUAL MEDIEVAL MARKET
ON SATURDAY 21ST JUNE
BEFORE THE FAMOUS
BRUTHEN MEDIEVAL
WINTER FIRE FESTIVAL!

Upcoming Events

JULY SCHOOL HOLIDAY PROGRAM

B&DNH'S FAMILY FRIENDLY DIS-GLOW DISCO

B&DNH RELAUNCH
YOUTH GROUP & PLAYGROUP

B&DNH MONTHLY FREE ART CLASSES

COOKING WORKSHOPS WITH SBA'S KITCHEN

MEN'S SHED KITCHEN REFURB

WOMEN'S RURAL INDUSTRY SKILLS TRAINING

FOR MORE INFO
FOLLOW US ON FACEBOOK CALL OR SMS 0497 544 490
OR STOP IN AND SAY HI 36 MAIN STREET BRUTHEN

