

# TAMBO RAMBLER

Bruthen and District Newspaper  
Produced by Bruthen and District Citizens Association

April

2025

NUMBER 306

## Village Maker supports local artists



GIPPSLAND  
Community  
Foundation

GCF proudly  
supports the Tambo  
Rambler  
Community Paper

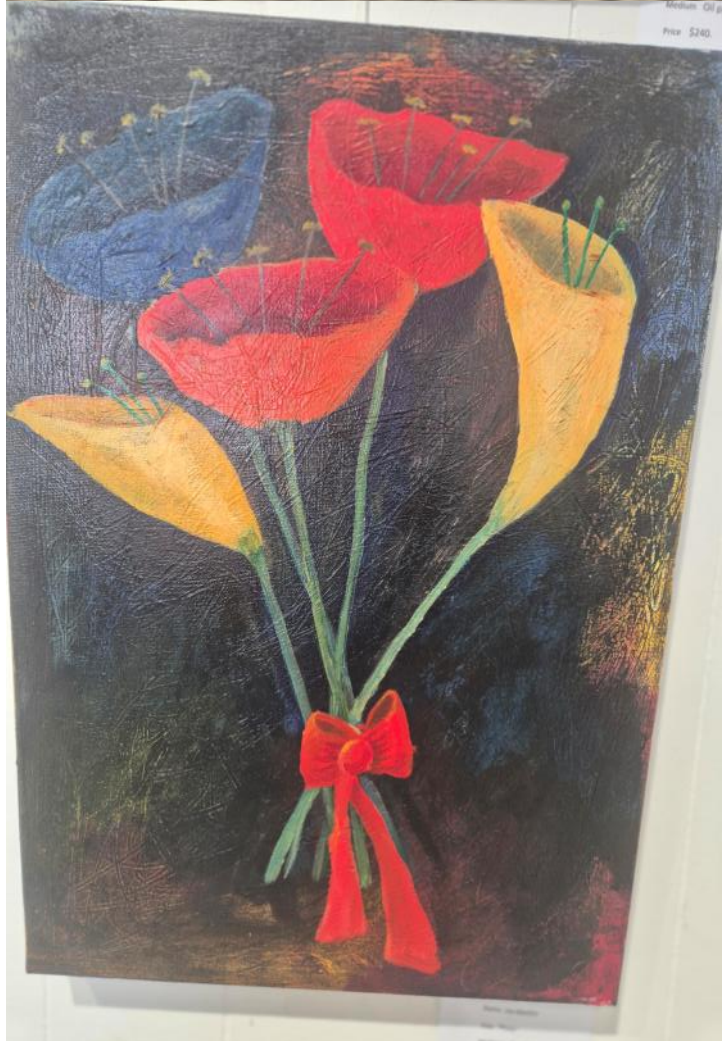
**The Tambo Rambler is proudly sponsored this month by Shoreside Real Estate Lakes Entrance**

*The Tambo Rambler would like to acknowledge the Gunai Kurnai People, the Traditional Owners of the land on which we gather, and pay our respects to their Elders both past, present and emerging.*





**Local artists Lauren Manley, Margaret Pearson and Joy Manley exhibited a range of works at Bruthen Village Makers during March.**



## Meet The Team At



**03 5155 3133**

1/521 Esplanade, Lakes Entrance VIC 3909

[shoresidere.com.au](http://shoresidere.com.au)

[admin@shoresidere.com.au](mailto:admin@shoresidere.com.au)

# Bruthen Arts & Events coming events

The Arts and Events Council has a great line up of events coming up over the next few months. Make sure you don't miss out.

## **BRUTHEN ART COLLECTIVE**

The ART COLLECTIVE is an Initiative of the Arts and Events Council to encourage and support community members to satisfy their creative side, funded with a Tiny Towns grant from Department of Jobs, Skills, Industry and Regions, Victorian Government. Come and Try sessions at the Hall on Wednesdays and Sundays during March proved very successful with everyone who attended enjoying the chance to try some pottery or painting. Several people took the opportunity to try out the pottery wheels, some more successfully than others. It was great to see people of all ages and backgrounds enjoying making art and each other's company, which is what we hoped would happen. It is an excellent opportunity to learn from each other and to meet new people.

The aim of the Art Collective is to create an accessible art space for all Bruthen and District community members to connect and build relationships within the community through arts, learning and skill sharing. The arts space will be fully supplied with art equipment and supplies for people to be able to access, use and learn at no or minimal cost. The arts space will be inclusive to all members of our small community and will foster feelings of connection and belonging within the community.

Initial plans were to work with Uniting Care to renovate a shed at Daniel Gunson Homes but this fell through when they pulled out of the agreement. A new home has yet to be found for the program and A&E members are still looking for a space to set up permanently.

Watch the Bruthen Arts Collective Facebook page for the next activities or send us your email address to get any newsletters.

## **ARTS AND EVENTS COUNCIL AUTUMN AND WINTER PROGRAM**

### **MEDIEVAL WINTER FIRE FESTIVAL**

June 21<sup>st</sup> 3pm to 9pm.

### **PASSION OF SAINT NICHOLAS CABARET SHOW**

July 19<sup>th</sup>

### **NO LIGHTS NO LYCRA**

Dancing in the dark with no limits or judgment.

If enough people are interested – so let us know.

### **MIXED BAG ART EXHIBITION.**

Spring date yet to be confirmed.

Contact email:- [bruthenaande@gmail.com](mailto:bruthenaande@gmail.com) or SMS us through facebook.

Next Meeting 6pm Tuesday 15<sup>th</sup> April at the Hall.

# ANZAC Day

Be part of your community  
ANZAC Day commemoration.



**When: Friday, 25 April, 2025**

**Assemble 05:50h, Service  
commences 06:00 Bruthen Main  
Street Gardens at the Cenotaph**

*Dawn will be breaking, the birds will  
be stirring, and sunrise will peek  
through at 06:44.*

**Bugler will sound the Last Post &  
Reveille**

## **Bruthen Inn Hotel**



Kitchen is open 7 days

Lunch 12-2pm (excl. Tues) Dinner 6-8pm

Tuesdays open from 5pm

Friday night raffles supporting local  
sporting clubs—10 draws.

Catering for private functions and community meetings

Courtesy bus operates Wed, Fri, Sat nights only

For enquires or bookings contact Bruthen Inn Hotel.

Cheers and beers, Stretch

**Phone (03) 51575201**



# Art exhibition April 2025 - Bruthen

A new art exhibition opened earlier this month at the Bruthen Village Maker and Gallery.

The exhibition features two local artists who have chosen Bruthen to showcase their work.

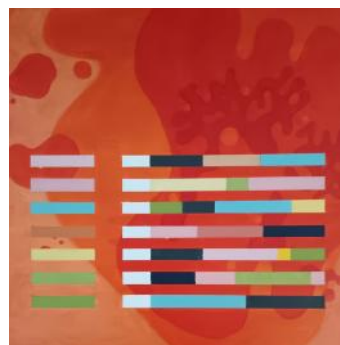
Paula Hunt is exhibiting a selection of small abstract paintings that have their genesis in some of the most campy, corny, and (at times) questionable sci-fi tv of the 70s and 80s. For her these paintings are an exploration of a sort of retrofuturism. She lives and works in Lakes Entrance, on Gunaikurnai country. She has a degree in Fine Art (Hons) from the VCA and a Master of Fine Art from Monash University. In the past she has exhibited at the Perth Institute of Contemporary Art (PICA), Bus Projects, Counihan Gallery, Kings ARI, Blindside ARI, Margaret Lawrence Gallery, George Paton Gallery, and as part of the Incinerator Billboard Project in Niddrie.

Belinda East grew up at Toorloo Arm, married and raised her 3 children in Lakes Entrance. Her grandmother had a huge influence on her with a large country garden that had to survive on no supplementary water. Belinda grew making cubby houses and flower potions in many corners of it. So, her love of plants and nature has always been a

huge part of her life. Belinda's creativity has gained momentum, and she has attended Rhonda Gray Art School in Bairnsdale for four years. On her three-acre property in Kalimna thousands of plants and trees have been planted attracting 40 bird species, three new ones arriving just this year.

Belinda believes planting trees and plants will be her legacy and hopes the garden will be around for generations to come. The majority of this collection of art is quite recent and it shows her love of the garden, and some of the birds that live in it.

**Heather R**



**Paula Hunt above. Belinda East below.**



**DO YOU HAVE DEVELOPMENT IDEAS?**

**TALK TO THE TEAM AT DSV!**

*Our team is highly experienced, passionate and ready to help you make your project dreams a reality, from concept development to completion.*

*Call us today for all your planning needs.*

admin@dsvc.com.au | 48 Bailey Street, Bairnsdale | (03) 5152 4858

**DEVELOPMENT SOLUTIONS**

**54 Main Street,  
Bruthen.  
Open 7 days  
Ph: 03-51575 415**



- Supplier of groceries, fresh fruit & vegies, hardware, fishing supplies and basic newsagency.
  - Beer, wine, RTD cans and ice.
  - Swap & Go BBQ Gas bottles.
- Shop local – support local employment**  
**email: [BruthenGeneralStore@gmail.com](mailto:BruthenGeneralStore@gmail.com)**



## Bruthen's Most Wuthering Heights Day

Kate Bush fans, can you find a red dress for this fun event? Or are you not sure what it is all about?

Well, it is all about having fun!!!

1. Get out your red dress (anything red will do if you do not have a dress). Bruthen Op Shop is putting red dresses aside so call in and check out its collection.

2. Go to the dance practice sessions at Bruthen Hall at 3pm on Sunday afternoons which all reports say have been lots of fun.

3. 5pm - April 25th turn up at the Bruthen Hall supper room ready to walk up the grassy hill to the kindergarten. RUN down the hill to music. Wheeee!!!

5:15pm - Wuthering Heights dance performance to Kate Bush music.

5:30 Alleycats Community Choir performance – 'Babooshka'

5:45 pm – 6:45pm Dinner will be served in the supper room – (a selection of vegetarian curries, rice, papadams and relish - \$10 curries and desserts \$5.00

The bar will be open so come & try our Kate Bush Mimosa cocktail special, also beer and wine. Tea and coffee (free) will be available.

NB: Following these activities the Forge Theatre is hosting the internationally acclaimed 'Not Kate Bush Show' at Bruthen Hall, starting at 7pm. So buy a ticket and enjoy the performance. Tickets for the show can be purchased through Forge Theatre or at the door (\$45, Concession \$42) Note that the show is rated 15+ as there is some mild coarse language.

The last three Sundays have seen a group of eager participants learning the dance routine as performed by Kate Bush in her song Wuthering Heights.

Thanks to Amanda King for teaching us and her patience.

Sunday 13th is the last practice in the Mechanics Hall at 3 pm followed by a full dress rehearsal at 6pm on Thursday April 25.

Get your red dress and come along!

We "wuther" on Friday from 5 pm.

Running up that Hill, and down.

Its all about having fun and community getting together.

Its me, I'm Cathy.

Joy M & Kath G



# Concern over impact of planned burns in Colquhoun Forest



On a perfectly calm and sunny Autumn Day, close to a hundred concerned citizens gathered at Log Crossing near Lakes Entrance to familiarise themselves with a vulnerable high-value site in the impending planned burnoff in the Colquhoun State Forest.

They were there for Picnic in the Park, starting with a leisurely walk along the Mississippi Creek trail towards the historic granite quarry. The sound of birds and the scratching evidence of lyrebirds caught the group's attention. A magnificent Sea Eagle flew overhead while an Eastern Yellow Robin flittered above. Majestic Blue Box, Peppermint, Messmate, the all-important Black Sheoaks (to the Glossy Black Cockatoo) amongst others created a shady and pleasant track with brachycome daisy, maidenhair, sword and tree ferns underneath. The destination was the point where a burn-off in 2010 had reached and crossed the creek and destroyed the understory including Olive Berry and Pomaderris trees which had not regenerated as they are very fire-sensitive. Instead, the scene was a highly flammable field of bracken which easily takes over after a burn-off.

This forest is home to Koalas, Greater Gliders, large forest owls, and countless small birds, as well as the critically endangered Glossy Black Cockatoos which rely on the seeds of the Black Sheoaks almost exclusively as their food source.

The Colquhoun Forest is one of East Gippsland's last strongholds of these trees, so their destruction threatens the very existence of Glossy Black Cockatoos.

Research shows planned burns are drying out our forests, replacing fire exclusive ecosystems which act as bushfire buffers with fire dependent ones making them more prone to bushfire, not less. Strategic fuel breaks are also contributing to the drying out of the forest and increase wind speed, thereby increasing fire risk. 6000 hectares of these fuel breaks are planned by 2030, approximately the same area per annum as that

previously logged by VicForest.

The burn which encompasses a large proportion of the park includes lush old growth riparian forests along Mississippi Creek. These wet forests provide a fire retardant buffer to bushfires, habitat and rare food sources for threatened species and are a treasured community asset for bush users such as bike riders, horse riders, walkers, joggers, tourists, field naturalists, bee keepers and families.

Event organiser Charley Daniel said 'Right across East Gippsland, FFMV burns are turning wet, green bushfire buffers into dry, flammable landscapes. Charley referred to a recent FFMV burn in Lake Tyers State Park. 'In that burn, hundreds of old mature trees were lost ... many hollow-bearing habitat trees that supported endangered species like the Greater Glider, Yellow-bellied Glider and Powerful Owl. Some were killed outright by the fire, others were felled by FFMV crews, or collapsed soon after.'

Please call or email your local politicians and forest managers if you wish to seek further information or to express concerns for the future of local forests.



## The Australian Glossy Black Cockatoo.



## Bruthen Seniors News

Bruthen Seniors held their AGM last week and afterwards enjoyed a delicious Middle Eastern-inspired lunch of beef and feta rolls, two kinds of salad prepared by outgoing Secretary Sue Smith and two yummy desserts prepared by Kay Hutchinson.

Sue had just been elected President for the coming year while Sandi Anderson replaced her as Secretary. Kay was appointed Activities Co-ordinator.

The Seniors meet on the first and third Wednesday of the month. The first Wednesday is held at 12 noon at the Bruthen Bowls Club with a yummy volunteer-made lunch. The third Wednesday sees us out and about trying new places and revisiting old favourites. Next week (April 16) we will be trying out the relatively new Benjamin's House, a Thai-inspired restaurant in Bairnsdale's Main Street with great reviews. Members pay \$50 per year which enables a \$15 subsidy on restaurant meals and covers the cost of the Bowls Club lunches. It will be a busy week as Kay has also organised a Good Friday lunch on April 18, with a seafood cook-out at Playgrounds on the Tambo River. Weather permitting, if not we'll be gathering at the Bruthen Rec Reserve. New members are always welcome to join this fun-loving, friendly group.

## Stage show comes to Nowa Nowa

The upcoming show "Dignified Anger: Stories for a Perilous Now" is being jointly hosted by Stories of Influence (under Dr Helen Sheil) and Nowa Nowa Events.


Helen, a Regional Community Development researcher, will be known to a number of residents in the Bruthen area for her participation in a range of community groups and activities, including a stint leading a writing group at the Bruthen and District Neighbourhood House.

And Jan Wositzky, one of the co-founders of renowned Australian folk band The Bushwhackers, has visited down this way before, being a key participant in one of the Stories of Influence weekends at the Lake Tyers Beach Hall. His collaboration with Penny Glass in the show "Dignified Anger" promises to be enthralling.

Some comments from audience members at previous shows:

*"A simply stunning evening – much to ponder over, remember and examine further."* (Katie Bestavar, Qld.)

*"OMG this is good stuff. Class Act. Highly recommended. Go!"* (Hamish Sewell, Qld.)



**La Digna Rabiá**  
**DIGNIFIED ANGER**  
Stories for a Perilous Now

*'OMG this is good stuff. Class Act. Highly recommended. Go!'*  
HAMISH SEWELL, AUDIENCE, QLD

Story telling, theatre and music,  
cooked up and performed by  
**PENNY GLASS & JAN 'YARN' WOSITZKY**  
**DIGNIFIED ANGER TOUR MAY 2025**

**SUNDAY 11 MAY AT 2PM**  
**NOWA NOWA HALL**  
39 WANDIN WAY, NOWA NOWA (ON THE HILL)  
Tickets: \$30.00 with option of pay forward solidarity ticket  
Bookings: [bit.ly/da110525](https://bit.ly/da110525)  
Presented by Helen Sheil for Stories of Influence: [ruralcommunities.com.au/stories](https://ruralcommunities.com.au/stories)



**La Digna Rabiá**  
**DIGNIFIED ANGER**  
Stories for a Perilous Now

We live in perilous times. Maybe we always have, but not on such a grand scale as now. So, what stories got us here? Stories of survival of the fittest, and that we should subjugate nature as we chant the neo-liberal mantra of never-ending growth? Are such beliefs bullshit?

**Dignified Anger: Stories for a Perilous Now** is the premiere collaboration of Jan 'Yarn' Wositzky and Penny Glass, performers and musicians who bring a wealth of personal and professional experience to this dramatic, moving and comical piece of storytelling theatre.

Taking its cue from the Latin American concept of **La Digna Rabiá**, **Dignified Anger**, the show brings together stories of Latin American indigenous communities who defy mines and dams on their country; the wisdom of the humble bushman Bill Harney (1895-1962), who returned from WWI with a hatred of war; the centuries old tale that questions, *What do women desire most, above all else?* ... plus more.

These stories are sprinkled with songs & music on a 5-string banjo, flutes, harmonica, rhythm bones, and drums. The debut performance was at the 2023 Woodford Folk Festival.

**Jan 'Yarn' Wositzky OAM** grew up listening to stories of his Czech-Scots family. He co-founded the much loved band, **The Bushwhackers**, and so to a fifty plus year career of storytelling, in theatre, radio and TV, oral history books with Aboriginal people 'up north' and many Australian history shows in schools.

**Penny Glass** grew up in a storytelling Aus-Polish-Jewish family. After studying drama at the VCA, she has worked in community & political theatre in Australia & Chile and co-founded cultural activist collective **Colectivo Sustaineto**. She currently teaches Drama for Social Action at Griffith Uni.

Directorial assistance by **Sue Ingleton**.

**DIGNIFIED ANGER TOUR - MAY 2025**

FRI 9 MAY	RAYMOND ISLAND HOUSE CONCERT AT 7PM
SUN 11 MAY	GIPPSLAND, NOWA NOWA HALL AT 2PM
FRI 16 MAY	CANBERRA, SMITHS ALTERNATIVE AT 7PM
SAT 17 MAY	SYDNEY, HUMPH HALL AT 7.30PM
SUN 18 MAY	KATOOMBA HOUSE CONCERT AT 3PM

FURTHER INFORMATION:  
[JAN@JANWOSITZKY.COM.AU](mailto:JAN@JANWOSITZKY.COM.AU)  
[JANWOSITZKY.COM.AU/DIGNIFIED-ANGER](https://JANWOSITZKY.COM.AU/DIGNIFIED-ANGER)

I N S E C T S P F M K A B L R  
 M A M M A L M Q O I N R L R E  
 X E K X N U V U S T S O A B D  
 N H L W T E H Z E N U S F B I  
 C L Q S J O S C I Q N J U W L  
 C P A S L K H T C R P U C R G  
 D W Y L U I H G E B O R Q B E  
 I U O G N T O W P A S H T P F  
 C W L U M R P W S T S L S F W  
 S J S E F Y J Y N W U W E O H  
 J S H E L T E R L Q M U R D T  
 W A E L A G O C S A H P O X V  
 S R F T Q Y G E U K C F F X Q  
 T A I L A R T S U A S U G G L  
 M I N D E P N U U B Z B E S E

<b>FOREST</b>	<b>TREEFROG</b>	<b>MAMMAL</b>	<b>PYGMY</b>	<b>POSSUM</b>
<b>HOLLOWS</b>	<b>SPECIES</b>	<b>PHASCOGALE</b>	<b>QUOLL</b>	<b>INSECTS</b>
<b>FISSURE</b>	<b>BAT</b>	<b>EUCALYPTUS</b>	<b>BARK</b>	<b>AUSTRALIA</b>
<b>GLIDER</b>	<b>STUMP</b>	<b>ANTECHINUS</b>	<b>NEST</b>	<b>SHELTER</b>

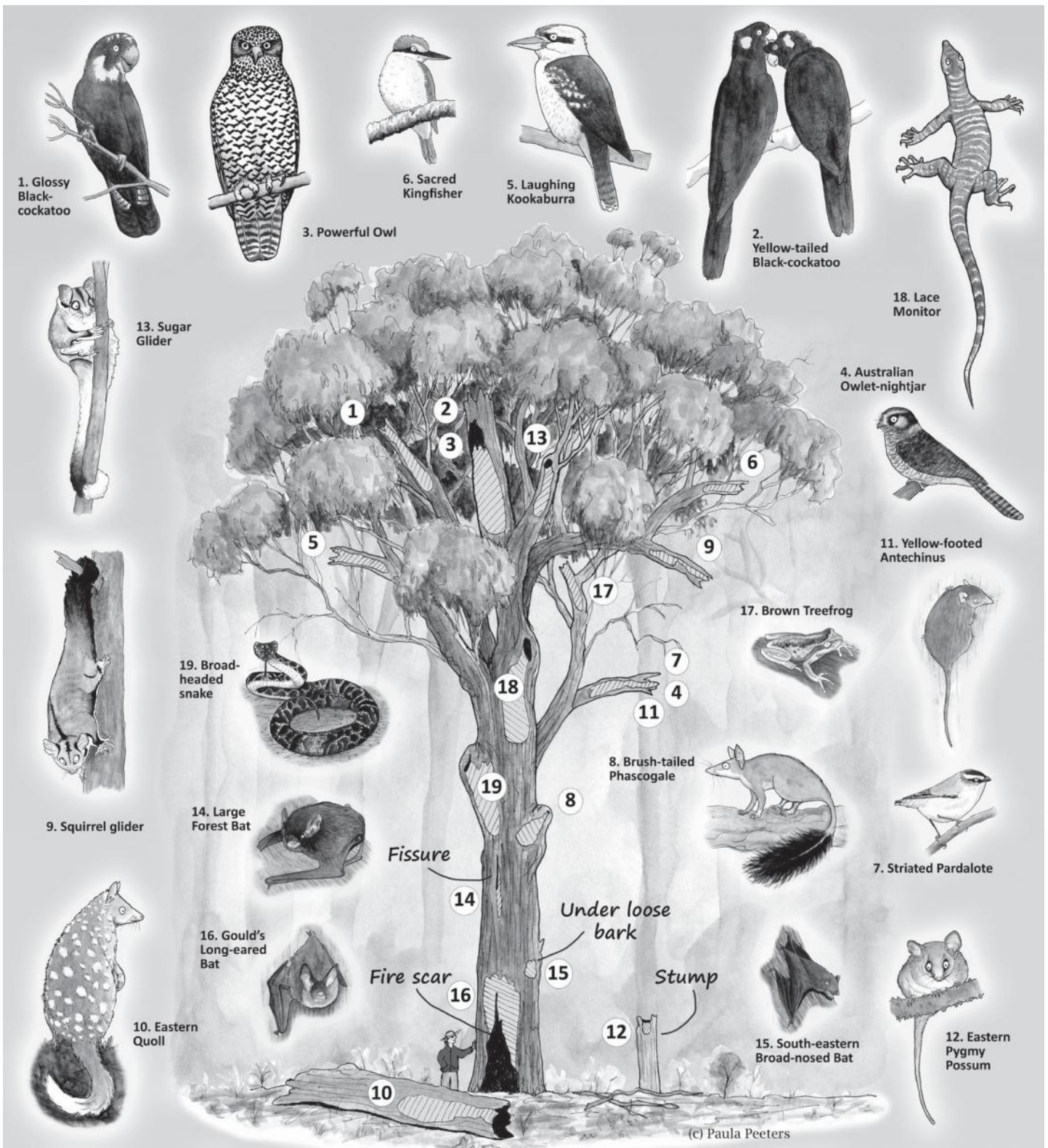
Our thanks to Dr Paula Peeters for  
 allowing us to share this terrific  
 colouring-in page. You can find out  
 more about her work (and access  
 more free downloads) at [https://  
 www.paperbarkwriter.com/](https://www.paperbarkwriter.com/)

## Target Words

S	H	R
T	O	E
E	U	E

How many words of  
 four or more letters  
 can you find? Every  
 word must use the  
 centre letter, and  
 each letter can only  
 be used once. And  
 what is the 9-letter  
 word?





(c) Paula Peeters

# Tree hollows are animal homes

## #1 Eucalypt Open Forest, south-eastern Australia

This poster shows 19 of the hundreds of Australian native animal species that use tree hollows (and loose bark) for shelter. The animal species depicted here are often associated with Eucalypt Open Forest (also known as Dry Sclerophyll Forest) in south-eastern Australia.

The tree represents the many species of *Eucalyptus* (and *Corymbia*, *Angophora* and *Lophostemon* species) that grow in Eucalypt Open Forest in south-eastern Australia. The hatched areas indicate the internal dimensions of each animal home. A hollow that shares a number with an animal species is an example of a type of hollow used by that animal. Some animal species use a variety of hollow types, but hollow internal size and entrance width is often related to the size of the animal.<sup>1,2,3</sup>

Eucalypts need to be at least 100-120 years old before they start to form hollows suitable for most of the animals pictured here.<sup>2,3</sup> Large hollows, such as those used by the Powerful Owl, Glossy Black-cockatoo and Yellow-tailed Black-cockatoo only begin to form in trees that are over 220 years old.<sup>2</sup> This is why the preservation of large, old trees is essential for the conservation of many native animal species.

Approximately 11 million hectares (33% or one third) of Australia's Eucalypt Open Forests have been destroyed since European settlement. Many large old trees have also been removed from the 22 million hectares of Eucalypt Open Forest that remains. Protection of the remaining areas of Eucalypt Open Forest will allow the animals on this poster (and many other animal species that use hollows in this habitat type) to survive and thrive into the future.

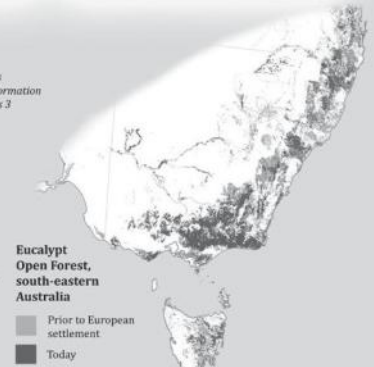
Right: Distribution of Eucalypt Open Forest in south-eastern Australia: orange shows pre-clearing extent, blue shows current extent. Source is the National Vegetation Information System (version 6), pre-European and extant distribution of major vegetation groups 3 (Eucalypt Open Forests) and 4 (Eucalypt Low Open Forests).

### References

1. Goldingay, R.L. 2009 *Wildlife Research* 36:394-409; 2. Goldingay, R.L. 2011 *Australian Journal of Zoology* 59:277-294; 3. Gibbons, P.P. and D.D. Lindenmayer 2002 *Tree hollows and wildlife conservation in Australia*. CSIRO Publishing, Australia; Mackowski, C.M. 1984 pp. 553-67 In: *Possums and gliders*, Smith & Hume (eds); Morcombe, M. 2003 *Field guide to Australian birds*. Steve Parish Publishing, Archerfield.

Thanks to Ross Goldingay, Phil Gibbons, Mel Venz, Dan Ferguson, David Watson and Ray Carpenter for information and advice.

Hollows research, design and illustrations by Paula Peeters; Vegetation data and map by Don Butler. Published in September 2023 by Paperbark Writer, Queensland, Australia. For wholesale enquiries contact Paula Peeters, [www.paperbarkwriter.com](http://www.paperbarkwriter.com) email: [paula.peeters@paperbarkwriter.com](mailto:paula.peeters@paperbarkwriter.com)





## Bruthen's Pet Corner

You may have noticed some new dogs in the neighbourhood – these two Border Collies are Morgan and Penny!

We moved to Bruthen 18 months ago and enjoy exploring the streets and rail trail, but our favourite places are Ramrod and the Bruthen Walking Trails with all its wonderful bush smells. As well as exercise, walks provide dogs with much-needed mental enrichment and communication as they gather information about their world through scent and pee-mail. To keep all our brains sharp, we also attend Bairnsdale and District Dog Obedience Club in Lucknow, which is run purely by volunteers and has some of the best trainers I've ever met.

If you see us on our walks, come say hi – both Morgan and Penny love pats.

Eloise H



**Darren Chester**  
Putting Locals First

#lovegippsland



**iNATIONALS** for Gippsland

[www.darrenchester.com.au](http://www.darrenchester.com.au)

Authorised by Darren Chester MP, National Party of Australia, Level 1, 69-81 Raymond Street, Sale VIC 3850

## St Matthew's Anglican Church Bruthen

(Opposite the CFA in Church Street)

**Church services every Sunday at 9.30am.**

Services also at St Columb's Swan Reach on the second and fourth Sundays at 11.15am, & at St Mary's Buchan on the third Sunday every second month at 2.30pm commencing in February of each year.

### EASTER SERVICES 2025

*Palm Sunday – 13 April 2025*

Holy Communion 9.30am

*Good Friday – 18 April 2025*

Good Friday Liturgy 9.30am

Stations of the Cross 3pm

*Easter Day – 20 April 2025*

Holy Communion 9.30am

Volunteers always welcome at the Bruthen Op Shop.

ALL WELCOME!! Please come and you are most welcome to contact:

The Rev'd Brian Norris on 0418 633446

**Church goes attending morning tea at the Rectory with the Rev. Brian Norris following Sundays Service**





# Bruthen - Bairnsdale Bus Timetable Dysons Bus Lines Ph: 5152 1711

Bruthen to Bairnsdale Morning	Monday & Friday AM	Tues, Wed, Thurs AM
Bruthen (opp) General Store	08:10 am	09:50 am
Bairnsdale, Corner Main & Bailey St	08:30 am	10:20 am
Bairnsdale Train Station	08:35 am	10:30 am
Bairnsdale to Bruthen Afternoon	Mon to Thurs PM	Friday PM
Bairnsdale Train Station	1:25 pm	3:40 pm
Corner Chemist (Service & Main Street)	1:30 pm	3:45 pm
Bruthen, Station & Great Alpine Rd	2:00 pm	4:15 pm

**EAST GIPPSLAND**  
SHIRE LIBRARIES

## Mobile Service Centre / Library Bruthen (Main St)



### What can you do at this mobile service centre?

- Borrow books, CD's, DVD's, audio books and more
- Pick up a Council newsletter and subscribe
- Lodge a report or request
- Pay an account / make electronic payments
- Make enquiries, collect and lodge application forms
- Register your dogs and cats
- Access and complete surveys
- Learn about and provide feedback on projects in your community
- Use a computer with free internet access
- Have a chat and much more

**Wednesdays**  
Fortnightly  
11.15am – 12.30pm  
Fortnightly

Jan 8<sup>th</sup> & 22<sup>nd</sup>  
Feb 5<sup>th</sup> & 19<sup>th</sup>  
Mar 5<sup>th</sup> & 19<sup>th</sup>  
Apr 2<sup>nd</sup>, 16<sup>th</sup> & 30<sup>th</sup>  
May 14<sup>th</sup> & 28<sup>th</sup>  
Jun 11<sup>th</sup> & 25<sup>th</sup>

Phone **5153 9500** with  
any queries about  
the service.

LIBRARIES  
Change Lives

# GLCH Services @ Bruthen

### GP Clinic

- Available Wednesdays by appointment only.
- Ensure your appointment is scheduled in Bruthen.

### Community Health Nurse

- Available Mondays and Wednesdays.
- Fees apply, but no one will be denied service due to inability to pay.

### Maternal & Child Health

- Available once a month on a Tuesday by appointment only.

### Pathology Collection

- Open Mondays and Wednesdays, 8:30 AM to 11:00 AM.
- Nurse fees apply.

### Room & Bus Hire

- Available for bookings.

## Booking and Contact Information

### **Call 5155 8300**

- For GP Clinic and Community Health Nurse appointments, select Option 1.
- For Room and Bus Hire, speak with our Customer Service team.

### **Learn More**

- Visit: [glch.org.au](http://glch.org.au)
- Follow us on social media!




## Tim BULL MP MEMBER FOR GIPPSLAND EAST

*Servicing Bruthen and  
district community.*



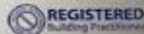
143 Main Street, Bairnsdale VIC 3875  
03 5152 3491  
[tim.bull@parliament.vic.gov.au](mailto:tim.bull@parliament.vic.gov.au)

Funded from Parliamentary Budget



**CALABRO BUILDERS P/L**

**DANIEL CALABRO** New Homes - Renovations - Extensions

Mob. 0407 524 256 calabrobldrs@aussiebb.com.au 

Specialising in new home builds – extensions – renovations – bathrooms – pergolas & decks.

Registered with over 35 years of experience – your local & trusted builder.

Obligation free quote – call Daniel on 0407 524 256.

***Bruthen Licensed Post Office*** (Est.1893)


Photocopying  
Scanning /  
Emailing  
Documents




Fax  
Service

Bill payments, Banking deposits & withdrawals, Western Union, Stationery, Wrapping Paper, Gift & Greeting Cards, PostPak & Australia Post Postal Services.

Howard & Jenny Young, Phone/Fax (03) 5157 5209



**IN AN EMERGENCY**



**Bruthen has Heart Start Defibrillators**

Located at:

**Bruthen Bowls Club** (on the veranda)  
Note: accessible 24/7 (under video surveillance)

**Bruthen General Store**  
(7days during business hours)

**Bruthen Rec Reserve**  
(for sports events / caravan park)

**Bruthen & District Neighbourhood House**  
(during business hours)

**Bruthen Fire Brigade**  
(on responding appliances & in the station)

## RECIPE: YELLOW SQUASH (or ZUCCHINI) RELISH

### INGREDIENTS:

750g grated squash  
2 tbsp coarse sea-salt  
2 green apples {peeled and chopped}  
2 brown onions (peeled and chopped)  
1 cup sultanas  
1 cup (250-300ml) cider vinegar  
2 tsp brown mustard seeds  
1 tsp ground coriander  
1 cup caster sugar  
1 tsp turmeric



Plus 1-2 tsp cornflour mixed to a paste with water. This is optional, if a thicker consistency is desired.

### METHOD:

Place yellow squash (or zucchini) in a non-metallic bowl, sprinkle with the salt, mix through and cover, leaving to soak for approximately 2 hours. Rinse salted squash, drain and squeeze out excess water and drain again on absorbent paper. Combine squash, apple, onions, sultanas. Vinegar and spices. Bring to boil. Reduce heat and simmer uncovered, stirring occasionally for approximately 20 minutes, until mixture is pulpy. Add sugar, stir over high heat without boiling, until sugar is dissolved. Bring to boil. Reduce heat and simmer uncovered, stirring occasionally, for 15 minutes until mixture is reduced and thick. Check consistency and add the cornflour and water paste to thicken it a bit more, stirring over low heat. Spoon the relish into hot sterilised jars. Seal immediately.

Label and date jars when jars are cold.

Makes 5-6 small jars.

**NOTE:** For added colour, some chopped red capsicum and sweet corn could be added to the mix in the cooking stage.

## TRADES AND SERVICES

### Bruthen Garden Supplies

#### NOW OFFERING WATER CARTAGE

• 13,000L WATER CARTAGE.

• DOMESTIC & GENERAL 7 DAYS

Tip-trucks 6m³ & 10m³, Bobcat, Excavator, Post Hole Boring, Trenching, Slashing.  
**SUPPLIERS OF SAND, SOIL & MULCH**



**WE NOW SELL CHOOK PELLETS**

**ALL AREAS**



**76 Main St, Bruthen**  
**M: 0429 944 297**



C13151



# Bird of the Month: Pacific Black Duck

The medium sized Pacific Black Duck is a familiar sight in East Gippsland wetlands, estuaries and bays. In more urbanised areas they can be seen grazing in pairs and family groups in parks near ponds, lakes, rivers and irrigated ovals or golf courses. They readily mix with other duck species and are spotted within large groups of mixed species. These dabbling ducks feed on algae and plants along with some invertebrates like snails and enjoy guzzling through shallow water and muddy areas. They usually stay close to water, grazing close to their nesting site which may be among reeds or foliage, or in a low tree hollow or stump. Male and female Pacific Black Ducks look similar with grey-brown bodies, tortoise shell patterned feathers and a small panel of blue-green on the wings. The maximum size is 60cm, with the female slightly smaller and lighter coloured than her mate. Despite being a common sight, these ducks are not to be overlooked as 'ordinary'. They have distinctive facial markings with two conspicuous cream and black stripes above each eye as captured in their Latin name *Anas superciliosa*, which sounds like it may also refer to the duck's haughty attitude to life and other ducks! Nomadic and dispersive, Southeast Australia sees seasonal shifts in Pacific Black Duck populations in response to favourable or unfavourable conditions. Breeding is aligned to optimum conditions; in southern Australia breeding occurs in Springtime following winter rains. Abundant rain across the seasons will encourage breeding all year round. These ducks form seasonal pairs and may remain together for life. The female incubates the eggs while the male stays nearby guarding the nest site and brooding female. Pacific Black Ducks are naturally wary but can become quite tame around humans if unmolested. It



**Photo:** Pacific Black Duck. **Photographer:** Sue Allison.

is important to refrain from feeding wild ducks in shared spaces like parks as inappropriate diet offered by well-meaning humans can impact on their health, growth and breeding. For many people, especially children, this proximity to wild ducks in local parklands is an exciting and rewarding interaction nature experience. If there are ducks in your neighbourhood, enjoy the opportunity for observation and interaction, being mindful of their natural habitat, nest sites and food sources. Potential predators include water rats, birds of prey such as eagles, tiger snakes, feral animals and roaming domestic pets (dogs and cats). Humans also pose a threat as the abundant Pacific Black Duck is listed as a huntable game bird and comprise a high percentage of killed waterfowl in the prescribed hunting season.

## Visitors and newcomers' welcome.

*Birdlife East Gippsland (BLEG) meets weekly at 9am on Monday mornings. New members and visitors are always welcome. An annual schedule of outings ensures diverse locations and interesting bird observing. Outings are usually for half a day with morning tea and lunch breaks which include collation of bird data surveyed. Some more distant locations will require a longer day.*

*BYO refreshments & water; wear appropriate clothing, boots and sun protection. Binoculars are handy. Planned outings may be affected by regional weather and emergency warnings or environmental conditions. If unsure, please check via BLEG Facebook page or email.*

[egbocmail@gmail.com](mailto:egbocmail@gmail.com)

## April 2025 Outings Schedule

DATE	LOCATION	9AM MEETING PLACE
April 7th	Fairy Dell, Wiseleigh.	Deep Ck Rd turn off on Gt Alpine Rd Wiseleigh.
April 14th	Heyfield Wetlands, Glenmaggie Weir.	Heyfield Wetlands, Traralgon-Maffra Rd. Heyfield.
April 21st	Wattle Point & Blond Bay.	Wattle Pt. Rd. Picnic Area carpark.
April 28th	Bentley Plain	Little River Inn, Ensay

# TAMBO RAMBLER

## Mossiface & Wiseleigh Hall News

Despite the very hot day keeping a lot of people away the hall committee agreed that the recent twilight social event was a success. It attracted locals of all ages and 'local longevity' who enjoyed the chance to catch up and have a chat, a sausage or two and delicious sweets and salads.

The committee is waiting to hear if they have been successful in getting two grants. One to build a storage shed and one to run a series of social events for the local community during 2025/26.

The committee also want to let locals know that there is now an AED (Automated Electronic Defibrillator) for use if someone has a cardiac arrest. The AED is simple to use with pre-recorded instructions to follow.

Ring Jeff on 0409765755 or Merewyn on 0459345049 to book the hall for your event.

## Federal Election May 3

The Australian Federal Government Election kicks off with early voting to begin on Tuesday, April 22.

Make sure you are enrolled to vote by checking the Australian Electoral Commission website at [www.ace.gov.au](http://www.ace.gov.au)

Locals can vote early in Bairnsdale at 89 Nicholson Street. Opening hours Tue 22 Apr – Thu 24 Apr: 8:30 am–5:30 pm, Sat 26 Apr: 9 am–4 pm, Mon 28 Apr – Thu 1 May: 8:30 am–5:30 pm, Fri 2 May: 8:30 am–6 pm.

Or at the Lakes Entrance Mechanics Institute, 18 Mechanics Street. Opening hours Tue 22 Apr – Thu 24 Apr: 8:30 am–5:30 pm, Sat 26 Apr: 9 am–4 pm, Mon 28 Apr – Thu 1 May: 8:30 am–5:30 pm, Fri 2 May: 8:30 am–6 pm.

On election day, Saturday May 3 you can vote between 8am and 6pm at the following locations.

Bruthen Mechanics Institute, 49 Main St, Bruthen VIC 3885

Johnsonville Public Hall, 1754 Princes Hwy, Johnsonville VIC 3902.

Metung Primary School, 90-96 Stirling Rd, Metung VIC 3904.

Nowa Nowa Community Health Centre, 4 Bridge St, Nowa Nowa VIC 3887.

Lakes Entrance Mechanics Institute, 18 Mechanics St, Lakes Entrance VIC 3909.

Buchan Primary School, 4 Dalley St, Buchan VIC 3885

Swifts Creek Hall, 6869 Great Alpine Rd, Swifts Creek VIC 3896

Orbost Community College, 20 Arnold St, Orbost VIC 3888

Omeo Soldiers Memorial Hall, 179 Day Ave, Omeo VIC 3898

Miva Miva Health Centre, 1 Maurice Ave, Mallacoota VIC 3892.

### Tambo Rambler Advertising Costs

#### BLACK AND WHITE Advert Options

- ⇒ 9 x 5 cm - Cost \$15.00
- ⇒ 9 x 8 cm - Cost \$20.00
- ⇒ 1/4 page - Cost \$25.00
- ⇒ 1/2 page - Cost \$50.00
- ⇒ Full page - Cost \$100.00

#### COLOUR Advert Option 1: Full Page

- ⇒ One full page, full colour feature / advert placed on the inside cover of the Tambo Rambler
- ⇒ Plus acknowledgement as the major sponsor for that month's edition of the Tambo Rambler
- ⇒ Cost - \$165 per edition

#### COLOUR Advert Option 2: Half Page

- ⇒ One half page, full colour feature / advert placed on the inside cover of the Tambo Rambler
- ⇒ Plus acknowledgement as the sponsor for that month's edition of the Tambo Rambler
- ⇒ Cost - \$100 per edition

#### COLOUR Advert Option 3: Quarter Page Full Colour Promotional Package

- ⇒ One quarter page, full colour feature / advert placed on the inside cover of the Tambo Rambler
- ⇒ Plus acknowledgement as the co-sponsor for that month's edition of the Tambo Rambler
- ⇒ Cost - \$65 per edition

#### Closing date for May issue is April 25.

Please send your articles by e-mail only to:  
**[tamborambler@gmail.com](mailto:tamborambler@gmail.com)**

(Word, Publisher, JPG or PNG format with photos please  
**PDF format will also be accepted.**)

Tambo Rambler is distributed across East Gippsland via email and on the web page at

**<https://bruthendistrict.org.au/tambo-rambler/>**

We also distribute to Government representatives, Bairnsdale Library, Victorian State Library, and local Historical Societies

Hard copies are available in Bruthen at the P.O, General Store, Oppe Shoppe, Bakery, Blue Bee, Hotel and Neighbourhood House for a gold coin donation.

The Tambo Rambler Committee and BDCA do not take responsibility for opinions expressed by contributors to the Tambo Rambler.

The Editors reserve the right to reject articles and advertisements and to edit submissions if necessary

**All submissions must carry the author's full name, address and phone number. They may be published anonymously if preferred.**



# Bruthen Football Club's new coach

Bruthen's Football Club Treasurer Brayden Smith asked the new coach a few questions before the season starts on April 12th.

## What's your football background?

Former Clubs (Player) Williamstown F.C. VFA U/19's, Western Jets, AFL U/18's, Williamstown F.C. VFL, Hoppers Crossing F.C. WRFL Div 1, Altona F.C. WRFL Div 1, Spotswood F.C. WRFL Div 1, Barwon Heads F.C. AFL Barwon, Former Clubs (Coached) Wyndham Suns F.C. WRFL, Deer Park F.C. WRFL Div 1, (ass. coach), Point Cook F.C. WRFL Div 1, Western Bulldogs Next Generation Academy, AFL, Hoppers Crossing F.C. WRFL Div 1, (ass. coach) North Geelong F.C. GDFL

## Footy Career highlights

Kicking 100 goals in a season  
Full Forward Barwon Heads Team of the Decade 2000-2009  
2008 Senior Premiership Player with Spotswood F.C.  
2018 Grand Final in 2nd year as senior coach  
2019 Assistant Coach Senior Premiership with Deer Park F.C. (clubs 7th Div 1 premiership in a row, Australian record)

## Favourite footballer as a child and in the modern game

As a child following Geelong there was no better than Gary Ablett Snr.  
I don't watch much AFL football these days so I'll go with Patrick Dangerfield.

## Do you still play footy now?

Yes, in 2025 I will be returning to play for the Williamstown F.C. over 45's team after joining the club in 2024 and being overwhelmed by the genuine support and professionalism shown by every single member of the club.

## How are you settling in to East Gippsland?

I've only been down here permanently since the start of March and it took just a week to unwind and appreciate that this is home now. I couldn't be happier.

Some questions about the club:

## What was your first impression of Bruthen and the footy club?

I recall saying to my mate as we drove into town how picturesque and beautiful the town looked. Before he could respond, we were crossing the



bridge out of Bruthen and into the Bruthen Football Club car park.

I thought I won't be able to use the excuse for being late to training or game day that I was stuck in the traffic.

When I arrived at the football club I was overwhelmed by the presence of players, committee members and legends of the club who were very respectful and made me feel so welcome. I knew at that point my future would be with the Bruthen Football Club.

## What excites you about the 2025 playing group?

Their energy and willingness to follow instruction gives me and supporters real belief in what this group is capable of.

## How would you describe your coaching style?

Inclusive, educational, enjoyable,

## And finally, what are you most looking forward to in season 2025?

The moment our playing group realises the full potential we actually have as a team. Our supporters being excited about Saturday afternoons watching their boys playing an exciting brand of football. Also trying the food from each club's canteen.

**BRUTHEN FOOTBALL NETBALL CLUB  
PRESENTS**

# **ANDREW WISHART**

**LIVE AT BRUTHEN RECREATION  
RESERVE**

**12TH APRIL 8.00PM**

**\$15 EARLY BIRD TICKET - ADULT**

**\$5 EARLY BIRD TICKET - CHILD**

Tickets on sale

Tuesday & Thursday Nights

at club rooms

5.00pm - 7pm

Or Available from Bairnsdale

Monday to Thursday

Contact Sally Cameron

0427 575 045

**TICKETS PURCHASED  
ON THE NIGHT**

**\$20 ADULT \$10 CHILD**

**CATERING ON THE NIGHT**

