

TAMBO RAMBLER

Bruthen and District Newspaper
Produced by Bruthen and District Citizens Association

February 2024

NUMBER 293

Daniel Gunson Memorial Village: What is its future?



Residents of Bruthen's in-town retirement community, the Daniel Gunson Memorial Village, have expressed concern as news has come through that UnitingCare plans to change the status of the community to one of rental accommodation under the Residential Tenancies Act rather than the current Retirement Village Act.

As the accompanying photos show, the 15-unit village is set in peaceful and pleasant surroundings, offering what UnitingCare describes as a 'balance of independence and connection'.

Resident Marg Pearson fears that the proposed changes will threaten the nature of the village which she sees as a much-valued asset to the local community.

She writes: "With years of fundraising by locals (including organising dances, cooking ginger fluff and sponges, and much more!) and voluntary labour by locals, the construction of 12 one-bedroom units commenced in 1973. A further 3 two-bedroom units commenced in 2003. Bruthen and district residents wanted a local facility for locals in their retirement. They worked hard for years, in concert with the Congregational Church, to achieve this.

The land was bequeathed by Daniel Gunson (1847-1915), a minister of the Congregational Church. This church later united with others (Presbyterian and Methodist Churches) in 1977 to become the Uniting Church. The Uniting Church now owns and manages the Daniel Gunson Memorial Village.

This foundation stone was unveiled by noted historian and genealogist Dr Niel Gunson (1930-2023) grandson of this region's pioneering pastor Daniel Gunson.

The Tambo Rambler is proudly sponsored this month by Elders Real Estate Lakes Entrance & Metung

The Tambo Rambler would like to acknowledge the Gunai Kurnai People, the Traditional Owners of the land on which we gather, and pay our respects to their Elders both past, present and emerging.



Sculpture Exhibition

Bruthen Arts & Events Council

- Food & Wine Festival

Arranging festivals and exhibitions doesn't happen overnight and I'm sure can be problematic but I found organising the Sculpture Exhibition as part of the Food and Wine festival an easy enjoyment.

Every artist I contacted was willing to support this community event with emphasis on giving to the community not selling their work.

The Mechanics Hall and lawn were chosen as exhibition sites.

Gary Belsky, Craig Terrill and Jon Whitfield exhibited powerful and imaginative sculptures on the lawn with titles such as 'Falling Rain', 'Scorpion' and 'Tree Fern' amongst others, whilst Alan Redshaw displayed his barbed wire balls and a Blue Wren birdbath.

The front room of the hall was decorated in black and white to showcase the 14 smaller and fabulous works in limestone, copper and wood from contributing artists Paul Gibbs, Daniel Jenkins, Anthony Marshall, Heather Rose, Scott Sheil and Kate Shone.

To the side of the lawn Robyn Norris, a sculptural basket maker from Mossiface displayed a variety of beautiful hand-woven baskets and framed art pieces. Robyn works with a variety of natural fibres and is inspired by nature.

Artists and volunteers were ready at hand to talk with the steady flow of visitors and a very happy, easy flow of conversation ensured.

We will hope to repeat this very enjoyable and successful event next year.

- H Rose.

Are you looking to Sell, Lease,
Buy or Rent a property?

CONTACT OUR TEAM TODAY



Visit our website:
lakesentrance.eldersrealestate.com.au



INSTAGRAM



FACEBOOK



YOUTUBE

Elders
Real Estate

03 5155 3133

1/521 Esplanade, Lakes Entrance VIC 3909
lakesentrance.eldersrealestate.com.au
admin@elderslakesentrance.com.au

Gunson: What is its future?

Without any prior consultation UnitingCare in November notified residents that as current residents depart the units would no longer be let out under the Retirement Villages Act. New contracts would be under the Residential Tenancies Act. Before the notice was issued, Uniting had already let out two units under the new RTA agreement. UnitingCare intends that once all the present tenants under Retirement Village contracts pass on they will cancel the registration under the RVA and operate the village as rental accommodation.

Many locals (beyond the residents) are deeply concerned by this decision. A petition is circulating both online and at various businesses in town advocating against the changes. The online petition gained 156 signatures in 24 hours. The Bruthen and District Citizens Association (BDCA) is also following up the issue on behalf of Bruthen residents.

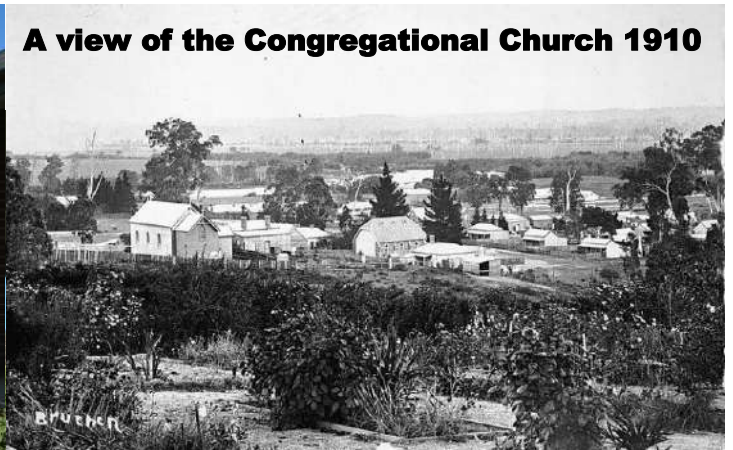
We believe that changing the village into rental units is against the spirit of the locals who worked

tirelessly for years to establish a retirement village for locals."

The BDCA provided the following comment:

"BDCA is keen to examine the reasoning behind the decision of UnitingCare and pursue the matter further at local and state level. Important to note is the ability to house residents of Bruthen & Districts in the local homes which were built with input and monies from the Congregational Church - raised from residents of Bruthen & District. The homes were named after Daniel Gunson who was a long-serving Congregational Minister.

It appears as if Uniting Care has plans to remove itself from responsibility of managing retirement villages in many areas and open these up to the general rent-paying public. This is seen as a slap in the face to the local community and to residents, with the BDCA interested in conducting further research to determine the full facts of Uniting's intent; so that a community response can be formulated to concerns held."



A view of the Congregational Church 1910



Bruthen Op Shop needs volunteers

The Bruthen Anglican Op Shop has had a busy start to 2024. It is always a popular focus for local and district shoppers and during holiday times attracts many curious tourists. While browsers and shoppers have kept Op Shop volunteer staff cheerfully busy, donations have also been arriving in high volume. This means busy “behind the scenes” activity for volunteers who sort the donations, re-stock the shop and separate items that are not suitable for sale. Soiled, torn, damaged goods are dispatched to a trailer that fills alarmingly quickly, requiring frequent tip runs by a regular volunteer.

The Op Shop volunteers appreciate donations of clean, functional, ready-to-use clothing, toys, and household and other items, ensuring a productive and interesting shopping treat. “Often we don’t know what we are looking for until it pops up as we browse” is a sentiment often expressed. Electrical goods cannot be sold as “Tag and Testing” capability is not currently available. Staff may advise donors of other outlets that can accept electrical items. And if people have any paper bags from supermarkets that they would like to recycle, staff will happily accept them to be reused in the shop.

Furniture and other larger donations can be stored in the Op Shop shed and staff can discuss this process if larger items are offered. Staff can also accompany customers to the shed to peruse the goods for sale. These many and varied volunteer tasks require many “hands on deck” and new volunteers are needed and welcomed.

A specific volunteer role needing a regular few hours a week is the cutting of rags to fill orders for “Bags of Rags” to local car dealerships and mechanics workshops. The Op Shop has a rag cutting machine that ensures a fast and efficient process.

People interested in being a volunteer can talk to any of the friendly Op Shop staff on duty. They will link prospective volunteers to the Op Shop Co-ordinator for further discussion.

A sampling of some of the many and varied goods on offer at the shop can be seen on the Facebook page “Anglican Parish of Tambo and Bruthen Op Shop”, which is updated regularly.

The Bruthen Anglican Op Shop is a significant part of the Bruthen community identity and welcomes all who pop in for a browse, a chat or an offer to volunteer.



Blues Inn Bruthen set to go off

Stretch and the crew at the Bruthen Inn are getting the last-minute details finessed for the second BluesInnBruthen music festival to be held over the weekend of February 16 to 18 February 2024.

The lineup includes the Anna Scionti Trio. Anna is a consummate blues, bluegrass and country artist who writes and sings her own compositions as well as classics and plays her own cigar box guitars. She has a rich, gutsy voice and a winning stage presence. She has just made it through to the semi-finals of the International Blues Festival in Memphis, Tennessee.

Jungle Jim Smith, armed with a 3-string cigar box guitar, trusty 6-string and shed-built foot drums, is a one-man-stomping'-boogie-blues-band with a rock'n'roll heart. Charged with infectious hooks and a riffage finesse, Jim's tunes are a souped-up blend of swamp blues, taking cues from RL Burnside, early ZZ Top and The Black Keys. Crooning vocals conjure up shades of Elvis and Morrison, as he seamlessly creates a full band sound that's been described as a 'swampy mix of rockabilly grit and hill country blues', charming a diverse range of music fans wherever he plays.

Geoff Achison is a blues-roots artist from Australia best known for his guitar playing and songwriting.

Geoff began his apprenticeship with legendary Australian bluesman 'Dutch' Tilders, establishing himself as a fine lead guitarist before launching 'The Souldiggers'.

See the ad on Page 10 or Facebook for more information.

Bruthen Arts and Events Council Inc.

A quick overview of what has happened during November and December.

Obtained a Regional Arts Victoria grant of \$6270 to bring two shows to Bruthen in 2025.

Undertook facilitated group session funded by East Gippsland Community Foundation to produce a Strategic Plan for our group which will guide future activities.

Partnered with the Bruthen Mechanics Hall for Bruthen Hall All Jazzed Up.

Planned and ran Eat Drink Explore Bruthen.

Engaged Jane McKay Communications to develop a new web page for the group. Have a look at www.baec.com.au

COMING EVENTS

June 22 - The Medieval Winter Fire Festival.

August 8 - You're an Instrument (Kids Show)

September 7 - Casting Off theatre show.

Next meeting 6pm, Tuesday February 20, at the hall. New members are very welcome.

Email address - bruthenaande@gmail.com Follow us on our Bruthen Presents Facebook page.

Joy Manley

Bruthen Art, Heritage and Information Centre

It has been a struggle to keep the doors of the Art and Information Centre open during January due to insufficient helpers to man the Centre. In fact, there have been a lot of days when it was not open. Despite that 356 people called into the Centre over the school holidays. Visitors value the help and information available at the Centre.

If you can help out please contact us. You will be VERY WELCOME.

Email: bruthenartandinfo@aussiebroadband.com.au

Phone: Ring Joy on 0490819507

By Joy Manley



BLACK ROSE CRAFTS

61 Main Street Bruthen

Open Wednesday-Sunday

10.30am - 3.30pm

Arts ACTION

FREE Professional Development for Creatives

Provided by your local Council

Support for your pathways & projects

MORE INFO

SUBSCRIBE

popupart.com.au/artsaction

BlueBee

CAFÉ TAKE AWAY

Monday - Thursday 6.00am - 3.00pm

Friday 6.00am - 7.00pm

Saturday 8.00am - 2.00pm

Sunday Closed

Phone Orders (03) 51575397 60 Main Street Bruthen



DINE IN

Eat Drink Explore Bruthen.

Produced by Bruthen Arts and Events Council Inc.

The sun shone just enough to make it a beautiful day for the first Food, Wine and Arts festival in Bruthen. People spread out on the lawns relaxing and chatting while listening to music from talented local acts 'G', 'io band', Todd Cook and the Rufous Whistlers, Olivia Lay and Dane Nicholls. Children (and some adults) played nearby with the big games and hula hoops. Chalk art on the footpath along with the brightly kites made and decorated by the kids plus the banners and lollypop flowers decorating the garden area added some pizzazz to the park-like area. Extra seating was provided with wine barrels, stools, deck chairs and milk crates with pretty cushions.

The food delights started on Friday night with the festival opening at Tambo Honey with a 5 course meal with ingredients and drinks sourced from East Gippsland. A meal that could not be faulted.

Festival goers enjoyed the food, wine, beer and other beverages which were all Gippsland based with local produce featuring highly in the ingredients. Everyone appreciated the chance to browse the range of stalls and if they could not find something they fancied there were always the takeaway shops and cafes in main street.

Bruthen Arts and Events Council aims to promote and nurture the arts in Bruthen and District and this event was used to do this. Apart from the music, the sculpture exhibition was popular with an interesting and visually pleasing mix of works from talented local artists. Pour painting demonstrations attracted a crowd of onlookers every time and traditional weaving skills fascinated onlookers

A big thankyou goes out to those people who stepped up and helped out on the day. Without all of the volunteers we could not have run this event. Thankyou also to Sue-Ellen Latham of Seventy Event Management and Communications for all the work you did to help pull it all together, Marg Pearson and Kye for the Pour Art demonstrations, Julia Tresize for the kite workshop, Tracey Johnson for the Paint and Sip sessions, Merewyn Davis for the Walk and Talk Weeds workshop, Heather Rose for putting together such a beautiful sculpture exhibition, all the sculptors, Lesley Czulowloski for sharing her Chilli sauce and Kasundi making skills, Sarsfield Cricket Club, our sponsor Wine Gippsland and last but definitely not least the Arts and Events Team of members who worked so hard to create another first for Bruthen.

Organisers have had their debrief session and plan to be back in 2025 on January 18th.

By Joy Manley





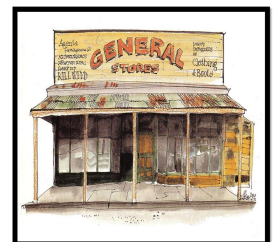
WHAT WE OFFER

- Planning Permits
- Subdivisions
- Strategic Planning
- Project Facilitation
- Land Developments
- Pre-Planning Advice
- Building Permit Assistance
- VCAT Representation

admin@devsolvic.com.au | 48 Bailey Street, Bairnsdale | (03) 5152 4858



**54 Main Street,
Bruthen.
Open 7 days
Ph: 03-51575 415**



- ✓ Your local ELGAS Distributor
- ✓ Supplier of local produce supporting local growers
- ✓ Provider of Butcher Supplied Quality Meats
- ✓ Supplier of gas heating, stoves, hot water systems
(provide a written quote & we will attempt to beat it)

**Shop local – support local employment
email: BruthenGeneralStore@gmail.com**

T N E B I Y Q E T P L T R Y B
E E R N U E E H F G M D B E R
H R Q E H R O O R I L E T R O
V K I F T R H O L G J T F O W
I P L B N T A S U Z N A U T N
O O W B B P A Y U Q F I L S E
P Q I J B L Q P E T S R W R L
I L Z T T U M K R G C T M E A
L U A W F M W R M F G S J D M
G I T F H A B I T A T S Q N E
L M E E N G S L U D Z T J U F
R E H T A E F I N S E C T S Q
D Y R Z N L S A C E Y E G X J
I V J R A B B T A O R H T C R
P C F G D T Q I O T Q C W W Y

- | | | | | |
|-----------|---------|------------|--------|---------|
| THORNBILL | FEATHER | STRIATED | TREE | WING |
| EYE | SHRUB | UNDERSTORY | BAND | HABITAT |
| NEST | BROWN | FEED | THROAT | PLUMAGE |
| EGGS | FEMALE | PATTERN | TAIL | INSECTS |

Target Words

L	R	U
A	A	A
T	S	I

How many words of four or more letters can you find? Every word must use the centre letter, and each letter is used only once.



Acanthiza Pusilla aka The Brown Thornbill



BROWN THORNBILL

The Brown Thornbill is a small bird of 9-10 cm, weighing only about 7 gm. It is one of the more common thornbills found in eastern and south-eastern Australia. It can be confused with other thornbills, so you need to look carefully at the patterns and colours of its plumage.

Its upper parts are olive-brown to grey, while the forehead is rufous/reddish-brown with pale scalloping. The lower parts are a lighter grey, with brownish flanks. There are darker streaks, or striations, on the chin, throat and chest. The eyes are dark red. The tail is grey-brown with a narrow black band and a white tip.

Brown Thornbills prefer thick shrubby habitats in a variety of forests and woodlands, and can also be found in parks and gardens. They feed mainly on insects, though sometimes they might also eat seeds and fruit or sip on nectar. They prefer to hang about in understorey shrubs and low trees rather than higher up.

Males and females form long-lasting bonds. The female will build a small domed nest, usually in a fairly low position, out of bark, grasses and other materials, and line it with soft materials such as plant down or feathers. She will sit on the eggs (2-4,

usually 3) for about 19 days until they hatch, when both parents feed the young until it is time for them to leave the nest and strike out on their own.

If you want to find out more about birds in your area, the website <https://www.birdsinbackyards.net/> run by Birdlife Australia, is an excellent resource.



HALF BROTHERS BOOKING • THE BRUTHEN INN PRESENTS

BLUES INN BRUTHEN

FEB 16TH - FEB 18TH - 2024

BONDI CIGARS
LLOYD SPIEGEL TRIO * GEOFF ACHISON
 ANNA SCIONTI TRIO * BLUES ROULETTE * PEPPER CREEK REVIVAL FEAT. KELLY AULTY
 RIDING NORTHBOUND * RHIANNON SIMPSON * JUNGLE JIM

SCAN FOR TICKETS  WEEKEND \$130
 FRIDAY \$25
 SATURDAY \$70
 SUNDAY \$55







EAST GIPPSLAND MAKERS' FESTIVAL

Applications are now open for Stallholders and Artisans to demonstrate your skills and sell your wares. Food Vendors are also invited to attend. Applications and guidelines for attendance will be emailed.

 Easter Saturday, 30th of March, 2024  Gates open at 9.00am to 4.30pm

LOCATION: BAIRNSDALE RACECOURSE

[Apply now!](#) [Email:rcmr9820@gmail.com](mailto:rcmr9820@gmail.com)
 Webpage:<https://www.rotaryclubofmitchellriver.org/>
 Mobile: 0425850148 (Debra)


 Rotary Club Mitchell River (Bairnsdale)

INFORMATION FOR CUSTOMERS

Australian Government Mobile Service Centre



Serving Regional Australia

Visit the Mobile Service Centre to find out about Australian Government payments and services for rural families, older Australians, students, job seekers, people with disability, carers, farmers and self-employed people.

Information about Department of Veterans' Affairs programs and support services for veterans and their families will also be available.

Staff can provide you with information and support. They can also help you create a myGov account. myGov is a simple and secure way to access government services online.

Thursday, 15 February 2024

9 am to 4 pm

Near the Bruthen Mechanics Hall, Main Street
BRUTHEN


For more information, go to servicesaustralia.gov.au/mobileoffice



  servicesaustralia.gov.au/mobileoffice

INFORMATION FOR CUSTOMERS

Australian Government Mobile Service Centres



If you live in a rural area, you may need to travel greater distances to access government payments and services. To make it easier for you to access these services, we're bringing them to you and your community.

Mobile Service Centres travel extensively throughout rural and regional Australia and also to disaster affected areas to provide help and support.

Staff from Services Australia travel with the Mobile Service Centres and can help you with Centrelink and Medicare payments and services. Our Mobile Service Centres also have disabled access.

Information about Department of Veterans' Affairs programs and support services for veterans and their families will also be available.

Wi-Fi is available for visitors to the Mobile Service Centre and staff will be able to help you create a myGov account. myGov is a simple and secure way to access government services online.

Our staff will provide you with friendly face-to-face service, information and support. From time to time, representatives from other government agencies also travel with the Mobile Service Centres.

Information and help you can access on board the Mobile Service Centres

We provide information, help and support to rural and regional communities, including:

- families
- older Australians
- students
- job seekers
- people with disability
- carers
- farmers
- self-employed people.



We can assist you with:

- registering and using the agency's online services
- new claims for Centrelink payments
- updating and confirming Centrelink and Medicare information
- information on how financial matters may impact on payments
- assistance with payment and service options
- rural payment entitlements for eligible farmers
- non-cash Medicare transactions
- enrolling for and issuing new Medicare cards
- updating and re-issuing Medicare cards
- social work support and referrals.

More information

To view the latest itineraries for the Australian Government Mobile Service Centres, visit servicesaustralia.gov.au/mobileoffice

The stopping locations for Mobile Service Centres are promoted in each town and on social media before each visit.

  servicesaustralia.gov.au/mobileoffice

Bruthen - Bairnsdale Bus Timetable Dysons Bus Lines Ph: 5152 1711

Bruthen to Bairnsdale Morning	Monday & Friday AM	Tues, Wed, Thurs AM
Bruthen (opp) General Store	08:10 am	09:50 am
Bairnsdale, Corner Main & Bailey St	08:30 am	10:20 am
Bairnsdale Train Station	08:35 am	10:30 am
Bairnsdale to Bruthen Afternoon	Mon to Thurs PM	Friday PM
Bairnsdale Train Station	1:25 pm	3:40 pm
Corner Chemist (Service & Main Street)	1:30 pm	3:45 pm
Bruthen, Station & Great Alpine Rd	2:00 pm	4:15 pm

Mobile Library



The mobile bus service provides an opportunity to not only use the library service, but to engage with them on Council matters. All community members welcome. See the schedule below for when one of our busses is visiting your community.

What you can do at the mobile service

- Borrow books
- Pick up a Council newsletter
- Lodge a report or request
- Pay an account / make electronic payments
- Make enquiries, collect and lodge application forms
- Register your dogs and cats
- Access and complete surveys
- Learn about and provide feedback on projects
- Use a computer
- Have a chat and much more

1st & 3rd Wed Thu	Tambo Upper *	9.00 am – 9.45 am
	Bruthen (Main Street)	10.15 am – 12.15 am
	Swan Reach Kinder	1.30 pm – 2.00 pm
	Nicholson	2:15 pm – 3:15 pm
	Bruthen (near kinder) *	11 am – 11.15 am
	Mossiface	11:30am to 12 noon

Sites marked are not visited during school holidays*

Phone 51524225 or 1300 555 886
www.eastgippsland.vic.gov.au



Mondays & Wednesdays from 8.30 am to 12.30 pm

GP Clinic: Wednesday by appointment only. Call 5155 8300 and select option '1'. Please make sure you let our Customer Service team know you would like your appointment in Bruthen.

Community Health Nurse: Monday and Wednesday, \$12 per consult or \$6 concession. Note: services will not be denied if you are unable to pay. Call 5155 8300 and select option '1'.

Maternal & Child Health: Once a month on a Tuesday by appointment only. Call 5155 8300 and select option '4'.

Room & Bus Hire: all bookings are to be directed to our Customer Service team on 5155 8300.

Pathology collection: Monday and Wednesday from 8.30 to 11.00 am. Nurse fees apply.

These services are for Bruthen and district residents. For more information about GLCH, our services and programs, please visit glch.org.au or find us on social media.



Tim BULL MP MEMBER FOR GIPPSLAND EAST

Servicing Bruthen and district community



143 Main Street, Bairnsdale VIC 3875
 03 5152 3491
tim.bull@parliament.vic.gov.au

Funded from Parliamentary Budget

EVENTS & NOTICES

Injured Wildlife Rescue

When you find injured wildlife please keep these details in case of emergency:

WILDLIFE SHELTERS

Jade Whittingham

Wombat Wisdom, (Bairnsdale), 0473 446 161

Holly Corbett

Holly's Wildlife Rescue (No bats) (530 Bairnsdale Dargo Rd Hillside 3875), 0432 539 408

Suzie

Waterholes Wildlife Shelter Clifton Creek Koala specialist, 0447 470 905.

Geoff Nicol

Treehouse Wildlife Refuge Metung, 0419 345 820

Birds, wombats, kangaroos, etc

Tai Chi

For all those people wanting to stretch themselves this Summer, Tai Chi is a series of gentle movements to encourage flexibility and mindfulness. Yes, the space can be cooled, and classes are on Mondays from 10.30 to 11.30am in the Bruthen Mechanics Hall.

Any enquiries please call 0439 812 166.

Bruthen Memorial Roses and Plaque update

There have been a few queries about the return of the memorial roses and plaques recently.

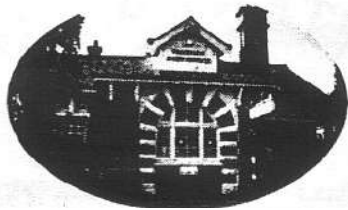
The East Gippsland Shire Council advise is that the remaining roses are still within the council depot nursery and will be replanted once the new toilet block is completed. The plaques from the memorial garden will be reinstated as agreed.

Unfortunately, some of the roses were found to be diseased and rotted and Council made the decision to plant new roses around the rotunda. Hopefully, Bruthen and its visitors have enjoyed the new streetscape this Spring/Summer and are looking forward to the toilets and gardens being finished.

BRUTHEN LICENSED POST OFFICE

(Est.1893)

East Link Toll Passes



Photocopying And Facsimile Service

CBA, NAB, WestPac Banking, Western Union Money Transfer, Bill Payments, Post Bill Pay, Stationery, Greeting Cards, Wrapping Paper, PostPak & Australia Post Postal Services

Howard & Jenny Young, Phone/Fax (03) 5157 5209

In event of an emergency

Bruthen has 6 Heart Start Defibrillators

Located at

Bruthen General Store
6.30am – 6.15/7.15pm (7 days)

Bruthen Rec Reserve
for sports events / Caravan Park

Bruthen Police Station
Note: under 24/7 video surveillance

Also Bruthen Bowls Club, CFA and Neighbourhood House

BRUTHEN REMEMBERS

Bruthen Remembers meets on the second Tuesday of every month at the

Community Hub 36 Main Street, Bruthen.

All Welcome.

**Next meeting 10:30am
December 12**



Darren Chester
Putting Locals First

#lovegippsland



INATIONALS for Gippsland

www.darrenchester.com.au

Acupuncturist coming to Bruthen

Community Acupuncture and Workshops at Bruthen Hall

Look out for the newest health and wellness offering in town! We're delighted to welcome Johnnie and his wife Katara at Bruthen Hall starting mid February. They have recently moved to the Gippsland area from Sydney and are excited to be launching community acupuncture and wellness workshops here.

Johnnie is a Doctor of Chinese Medicine, his speciality is Japanese acupuncture, Chinese herbal formula and moxibustion amongst other techniques. The concept of "community acupuncture" is offering natural health services at affordable rates (and hopefully avoiding long waiting times!) Some of the workshops they have in store include QiGong which is a practice to promote vitality, longevity and total wellness.

Look out for flyers around town that announce the launch date! Johnnie is looking forward to helping you with all aspects of your health at Bruthen Hall. Book in directly online or just drop in. Feel free to come by for a quick chat if you're not sure or plan to join one of Katara's QiGong classes.

Learn more at <https://KuraElements.com>

Pictured Below: Acupuncturist Johnnie coming to Bruthen in mid February.



TRADES AND SERVICES

Chris Fella

Qualified Carpenter

Renovations, Decks Pergolas, New

Houses, Fencing

20 Year Experience

TFN 195 357 871

MB. 0412 9912 60 PH. 5157 5198

E. chrisfella@bigpond.com

ACG

KITCHENS & CABINETS

Adam & Carly Greenwood

Email – info@acgkitchens.com.au

Phone – 0402 137 148

Tambo Upper

RIVIERA GAS SERVICES

Peter Weeks

Specialising in Gas Installations

Conversion and Maintenance

General Plumbing

Lic No 21065 **Mobile: 0418 516 745**

Bruthen Garden Supplies

NOW OFFERING WATER CARTAGE

• 13,000L WATER CARTAGE.

• DOMESTIC & GENERAL 7 DAYS

Tip-trucks 6m³ & 10m³, Bobcat, Excavator,

Post Hole Boring, Trenching, Slashing.

SUPPLIERS OF SAND, SOIL & MULCH



WE NOW SELL CHOOK PELLETS

ALL AREAS



76 Main St, Bruthen

M: 0429 944 297



TAMBO RAMBLER

Bruthen Primary School 2023: The year that was

Tambo Rambler Advertising Costs

BLACK AND WHITE Advert Options

- ⇒ 9 x 5 cm - Cost \$15.00
- ⇒ 9 x 8 cm - Cost \$20.00
- ⇒ 1/4 page - Cost \$25.00
- ⇒ 1/2 page - Cost \$50.00
- ⇒ Full page - Cost \$100.00

COLOUR Advert Option 1: Full Page

- ⇒ One full page, full colour feature / advert placed on the inside cover of the Tambo Rambler
- ⇒ Plus acknowledgement as the major sponsor for that month's edition of the Tambo Rambler
- ⇒ Cost - \$165 per edition

COLOUR Advert Option 2: Half Page

- ⇒ One half page, full colour feature / advert placed on the inside cover of the Tambo Rambler
- ⇒ Plus acknowledgement as the sponsor for that month's edition of the Tambo Rambler
- ⇒ Cost - \$100 per edition

COLOUR Advert Option 3: Quarter Page Full Colour Promotional Package

- ⇒ One quarter page, full colour feature / advert placed on the inside cover of the Tambo Rambler
- ⇒ Plus acknowledgement as the co-sponsor for that month's edition of the Tambo Rambler
- ⇒ Cost - \$65 per edition

Closing date for March issue is February 25.

Please send your articles by e-mail only to:
tamborambl@gmail.com
(Word, Publisher, JPG or PNG format with photos please
PDF format will also be accepted.)

Tambo Rambler is distributed across East Gippsland via email and on the web page at
<https://bruthendistrict.org.au/tambo-rambler/>

We also distribute to Government representatives, Bairnsdale Library, Victorian State Library, and local Historical Societies

Hard copies are available in Bruthen at the P.O, General Store, Oppe Shoppe, Bakery, Blue Bee, Hotel and Neighbourhood House for a gold coin donation.

The Tambo Rambler Committee and BDCA do not take responsibility for opinions expressed by contributors to the Tambo Rambler. The Editors reserve the right to reject articles and advertisements and to edit submissions if necessary

All submissions must carry the author's full name, address and phone number. They may be published anonymously if preferred.

It has been a busy year at Bruthen Primary School with all students making a year's growth or more in Literacy and Numeracy. Their NAPLAN results (National Assessments for Grade 3 & 5) achieved above like schools, above the network (local schools) and above state performances in all areas. Their student attitude to school survey also showed that their students feel safe and happy to be at school and being challenged and having voice & agency of their learning is important to them.

They have also enjoyed Art, PE, ICT, Language & Cultural Studies, Aquaponics and Music and Wellbeing as specialist subjects throughout the year. Bike Education, Cyber Safety, Swimming and Breakfast Club also ensure the students understand the importance of safety and looking after themselves and others.

ANZAC Day and Remembrance Day celebrations are led by the senior students as a reminder to be grateful for the wonderful life we have because of the sacrifice of others.

Camps, excursions and extracurricular activities are always a hit at Bruthen Primary School and the students enjoy exploring new places, participating in activities that take them outside their comfort zone and building strong lasting friendships. Grade 4/5/6 students visited College by the Sea in Queenscliff for a week. Grade 3/4 spent three nights at Karoonda Park Camp at Gelantipy, whilst Grade 2 students learnt about the cultural perspectives at Lake Tyers as part of their two day camp in the local area. Foundation and Grade 1 students had a special sleep over at school and explored Lakes Entrance parks and beaches as part of their Big Day Out. To celebrating their final year in Primary School, Grade 6 students paddled down the Tambo River on Monday, December 18.





