
TAMBO RAMBLER

Bruthen and District Newspaper
Produced by Bruthen and District Citizens Association

June

2023

NUMBER 286

From little things, big things grow



Sophie shows that age is no barrier to lending a hand for Landcare

The Tambo Rambler is proudly sponsored this month by Elders Real Estate Lakes Entrance & Metung

The Tambo Rambler would like to acknowledge the Gunai Kurnai People, the Traditional Owners of the land on which we gather, and pay our respects to their Elders both past, present and emerging.



If you're keen to do something for the environment, keep an eye out for notices in the Rambler, social media and the Bruthen Landcare Group Facebook page at <http://www.facebook.com/bruthenlandcare> and bring your family and friends to lend a hand, make a difference and plant for biodiversity.

Are you looking to Sell, Lease,
Buy or Rent a property?

CONTACT OUR TEAM TODAY



Visit our website:
lakesentrance.eldersrealestate.com.au



INSTAGRAM



FACEBOOK



YOUTUBE

Elders
Real Estate

03 5155 3133

1/521 Esplanade, Lakes Entrance VIC 3909
lakesentrance.eldersrealestate.com.au
admin@elderslakesentrance.com.au

Landcare rehabilitates Old Tambo site

This project was funded by Regional Roads Victoria and the Victorian Government through their Victorian Landcare Grants. The instigation of this project was also the impetus to re-start the Bruthen & District Landcare Group (B&DLG) whose membership had waned over the covid period.

If you walked past this wetland area on the rail-trail in early 2022, you would've been struck by thickets of mature willows clogging the waterway and the masses of blackberries blanketing the understorey outcompeting most other plants except a few weeds. It was this lack of biodiversity in an area which originally would have hosted a vast array of life forms that inspired our group to take action.

It'll probably come as no surprise then that floodplain landscapes in many of our agricultural regions in Victoria are generally classified by Catchment Management Authorities as "poor," in terms of biodiversity. The area this project focuses on is located on a section of the old course of the Tambo River. It features a Billabong on the eastern side and is divided by Deep Creek which runs through the middle of the wetland. It is directly adjacent to the busy Great Alpine Road, to the north of the site, and agricultural land to the south, east and west of the site. The area encompasses approximately 1.4 ha and contained at least 110 willows and a large patch (8000 sq m) of blackberries.

The primary objective of this project is to eradicate these weeds, rehabilitate the wetland and begin, in a small way, to address the "poor" status of floodplain biodiversity.

Planning for this project started two years ago in May, 2021 with an application for a grant to Regional Roads Victoria (RRV). Due to departmental changes in the Victorian Government Transport Ministry, grants were not approved until nine months later and then issued in May, 2022 when works were commenced by contractors.

The first stage in the works was to treat the wall of blackberries that covered more than 8,000 sq metres of wetland. Contractors used a Ute-mounted, high volume spray unit and were able to treat 5,000 sq meters of blackberry within the allocated budget. The other major weed, in terms of cover, was willow, covering more than 5,000 sq metres. Contractors were able to treat 108 willows, most by the 'frill & fill' method, which means the treated willows remain as dead standing trees. Several large willows could not be accessed for treatment due to high water levels. Other weeds treated included the fast growing and transforming plant 'bindweed' and bridal creeper.

The second stage of the works was to clear the dead blackberry canes and treat the 40+ stone-fruit trees and any re-sprouting blackberries that were scattered throughout the 1.4 ha site. In November 2022, contractors worked for two days and used brush cutters to mulch 2,000 sq meters of dead

blackberry and treated most of the stone fruit trees. Herbicides were also used to treat re-sprouting blackberry, bindweed, Japanese honey-suckle, wandering trad and blue periwinkle. This stage was paid for by re-allocating funds set aside for planting 5,000 tubestock (the trade-off being that volunteers would complete this task).

Despite the fabulous work provided by the contractors, budgeting constraints meant that 3,000 sq metres of blackberry remained untreated, including 2,000 sq metres of pasture grass. Also, while bindweed had already been knocked down by the contractors the re-sprouting bindweed was able to re-establish itself in the intervening months and cover large areas due to reduced competition.

The completion of stage one and two now rested with volunteers from the Bruthen & District Landcare Group who spent more than 80 hours (between December 2022 and March 2023) treating and brushcutting blackberries, applying herbicide to bindweed, creeping buttercup, pasture grasses and other weeds. The combined work of contractors and volunteers has produced a site of 0.7 ha (i.e: 6,700 sq metres which is half the total area of the site) that is currently clear of perennial weeds and ready for planting.

During this period it became obvious that suppression of weed growth was necessary to ensure the survival of newly installed plants. It was decided that this could be achieved by increasing plant density by purchasing more plants and protecting tubestock with plant guards to provide a cover during herbicide treatment of perennial weeds and to inhibit rabbit browsing. The B&DLG was successful in obtaining more funds through the Victorian Landcare Grants issued by the Victorian Government to achieve this end.

Stage three was scheduled to commence in Autumn 2023 with the arrival of 11,000 plants from the contract nursery. Tubestock was delivered at the end of April and contractors and a Landcare volunteer planted 1250 riparian plants on the day of delivery. Following this, five Community Planting Days were organised in April and May where a further 4,000 plants were installed with guards with the help of more than 30 volunteers.

Plants were selected following DEECA's pre-1750 modelling for this site. Wetland and riparian plants were grown for drainage lines and low-lying, inundated areas of the site. Grassy woodland plants were chosen for land adjacent to swampy areas which reflected the existing remnant plants in the area. Plants chosen for the southern, shady sections include a few rainforest and damp forest species to accompany the remnant ferns on the roadside slope. Further planting is scheduled for late winter - early spring, 2023 when the middle and eastern section of the site have been cleared of weeds and are ready for planting.

Norm Borg

Neighbourhood House introduces the current team and celebrates the contribution of volunteers

The BDNH team of Finance Manager Kelsey Schueler, new Manager, Nikki Willett, and Program Coordinator Joe Ciemcioch.



Across Australia the week of May 15 – 21 was celebrated as National Volunteer Week. The theme this year was The Change Makers, as it recognised the work of the millions of people across the country who contribute their skills, energies and time to foster well-being, connection and meaningful change in their communities. This could be in schools, emergency services, sports clubs, charitable and service organisations, seniors and aged care, environment and conservation work, animal welfare, arts and events, disaster relief ... and the list goes on.

The team at Bruthen and District Neighbourhood House (BDNH) hosted a luncheon at the Bruthen Inn on Wednesday May 17 to bring together a number of local volunteers in appreciation of the positive impact they have in the community. This proved to be a very enjoyable occasion to meet up for a good chat and a laugh, as well as introducing people to the new manager at BDNH, Nikki Willett.

Nikki has a range of experiences in Community Services, and having grown up in the area has significant local connections and knowledge. She understands it is critical to consult with the community to identify local needs and guide responsive BDNH programs and services. Nikki has recently distributed a survey to groups and businesses in town as well as to those who attended the lunch, seeking input and ideas. Her enthusiasm for the future development of the House is clearly shared with others in her team: Program Coordinator Joe Ciemcioch and Finance Manager Kelsey Schueler, as well as Committee members and the team of volunteers.

Already a new Mums and Bubs program has kicked off, each Friday from 9.30 to 11, and this has proved to be a real delight. A school holiday program has been developed for the June/July term break, with details being sent to Bruthen and Tambo Upper Primary Schools. There will also be an Open Day during the school holidays, on July 5, which will include children's activities.

The BDNH team has been working on improving the interior of the building to ensure it is more inviting and friendly as well as practically useful for a range of purposes and gatherings. They would like to express their thanks to Office Choice Bairnsdale for



their support with a key furniture upgrade. Discussions are also underway for upgrading outside facilities to enhance community connections.

Anyone wishing to find out more about the BDNH program and events, as well as the professional services and support it offers, can check its Facebook page, or call 0497 544 490.... or just drop in at 36 Main Street.



Phoenix Art Studio & Gallery
 0438 035 777 61 Main Street Bruthen
 Open Wednesday–Sunday
 10.30am –3.30pm



FREE Professional Development for Creatives
 Provided by your local Council
Support for your pathways & projects

[MORE INFO](#) [SUBSCRIBE](#)

popupart.com.au/artsaction



Blue Bee CAFE TAKE AWAY

Monday - Thursday 6.00am - 3.00pm
 Friday 6.00am - 7.00pm
 Saturday 8.00am - 2.00pm
 Sunday Closed

Phone Orders (03) 51575397 60 Main Street Bruthen



D I N E I N

Visitors return to Fairy Dell

More than three years after hugely destructive fires tore through our region, the much-loved Fairy Dell Flora Reserve is again open to the public.

On Sunday 28 May, local Parks Victoria staff hosted a lunchtime barbecue to celebrate the re-opening and the extensive works that have been undertaken in the Reserve. The picnic area has a new toilet block and barbecue facilities, and the car park is clearly delineated and separate from this area. A new bridge crosses Deep Creek and is wide enough to allow small machines to cross for the ongoing track maintenance that is required. Along the resurfaced Loop Track there are numerous newly installed steps as well as railings, benches and erosion control works. All of this work was undertaken by local contractors.

There was a good crowd in attendance to enjoy the food and refreshments, with the added pleasure of the Alleycats Community Choir with their lovely layered harmonies.

Many took the walk along the Loop Track, where there was plentiful regrowth to be seen. Scats, tracks and scratchings were evidence of some of

the wildlife in the area, and there were many sightings and songs of birds. Sadly the beautiful warm temperate rainforest area at the top end of the loop has lost much of its broad, deep canopy, and recovery will be a slow process, with an uncertain future.

There were many younger people at the Reserve on this day, and it was great to see that Parks Victoria staff had a display detailing their Junior Rangers Program. This offers a range of free outdoor activities such as rock pool rambles, wildlife tours (including some at night) and even an underground exploration tour, all with a real park ranger, in one of Victoria's many amazing parks. The Junior Ranger activities are mostly run in school holidays and on some weekends. There is also a great range of activity and information sheets that can be downloaded from their website for exploration with family and friends.

For more check out <https://juniorrangers.vic.gov.au/about/>

For more pictures see page 23.
Jenny C



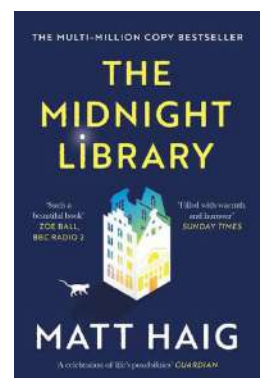
Book Review: The Midnight Library

The meta-verse is a hot topic at the moment with this year's Oscar-winning movie "Everything, Everywhere, All at Once." Matt Haig's multi-million copy bestseller from 2020 explores this concept with an inventive story of life-changing choices and how they shape our lives.

Nora decides to kill herself, no-one really cares about her, she feels she's "just not meant for this life" but she ends up in limbo, in a mysterious library with a kindly librarian from her past who allows her to try the different lives had she chosen different paths. Her regrets have weighed heavily throughout her life but as she tries on her different options, she realises she really needs to actually embrace her actual life and make the best of her choices.

This book is so life-affirming, funny, deep interesting with an intriguing premise. My interest has been piqued to explore his other fiction and non-fiction works.

Pamela B



Bruthen and District Senior Citizens

We get together on the first and third Wednesday of each month and new members are warmly welcomed.

The first Wednesday is held at the Bruthen Bowls Club, with a home cooked meal and the bar operating. The third Wednesday is an outing somewhere for lunch, Lakes or Bairnsdale, Sale or Metung, we get around. A complimentary bus, (thanks GLCH), runs to and from Bruthen. A yearly membership fee is \$50 due to Government Funding cuts. We are planning a bit of fundraising to help us cover these costs. Nothing too strenuous, a Bunnings BBQ on Sunday 9th July will help so please come along and support us.

This month it's Roast Chicken lunch on June 7, and Glenara RSL at Lakes Entrance on June 21. Meals are subsidised by Seniors to the max of \$15 but feel free to order whatever you like and make up the difference. Alcohol is always at your discretion and cost.

Other upcoming events to look forward to are *Christmas in the Middle* on July 19, swimming and/or aqua aerobics and a look around the Metung Hot Springs.

We're a happy inclusive and supportive bunch so please come along and join us.

Contacts are President Peter Bowlen 0447 168 629 or yours truly Secretary/Treasurer Sue Smith on 0407507849.

Addendum to April article on East Gippsland Timber Milling Project

In April we ran a cover story on the East Gippsland Timber Milling Project titled 'Local projects rebuilding communities after bushfires'. Following this the EGTMP team was contacted by a reader concerned that trees might be purposefully felled for milling.

We wish to clarify that the EGTMP emphasises to landholders that the project only mills salvaged timber - trees that were felled or came down during or immediately after the fires. The team closely surveys each property before coming to an understanding with the landholder as to how the project will proceed. Further, the EGTMP assists each landholder with replanting by donating saplings propagated from seeds collected locally by volunteers.

Jenny C

Looking for a good read

Looking to snuggle with little ones during cold weather to read and talk about what's in a good book?

Here are the titles and authors which made The Children's Book Council of Australia shortlist this year in the Early Childhood category:

- Where the Lyrebird Lives – Vikki Conley
- Jigsaw: A Puzzle in the Post – Bib Graham
- Lionel and Me – Corinne Fenton
- Market Day – Carrie Gallasch
- Bev and Kev – Katrina Germein
- Snap! – Anna Walker

BRUTHEN OP SHOP
has RAGS available
great for any cleaning
\$8 a big black bag all
cotton!

Tim BULL MP
 MEMBER FOR GIPPSLAND EAST

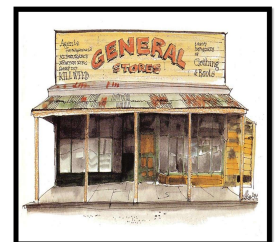
Servicing Bruthen and district community



143 Main Street, Bairnsdale VIC 3875
 03 5152 3491
 tim.bull@parliament.vic.gov.au

Funded from Parliamentary Budget

**54 Main Street,
 Bruthen.
 Open 7 days
 Ph: 03-51575 415**



- ✓ Your local ELGAS Distributor
- ✓ Supplier of local produce supporting local growers
- ✓ Provider of Butcher Supplied Quality Meats
- ✓ Supplier of gas heating, stoves, hot water systems
(provide a written quote & we will attempt to beat it)

Shop local – support local employment
email: BruthenGeneralStore@gmail.com

Stonework in the gardens



Scott Lawless from Gippsland Stone has been busy building a beautifully-crafted, meandering stone wall along the new footpath in the Main Street gardens.

It was designed for comfortable seating along its length by Liz Heath, the consultant landscape architect for East Gippsland Shire. Liz insisted on local stone being utilised. Whelan's Quarries have supplied mainly basalt (bluestone), with some lighter-coloured sandstone blocks and shale.

Scott mainly lectures these days in the TAFE system, passing on his 30 years of considerable knowledge, skills and experience in stonework to apprentices.

The project will be completed by June 30 .

Pamela B



Winter warmers welcomed at St. Vinnies

Member for Gippsland East, Tim Bull, along with St Vincent De Paul volunteers in Bairnsdale, are calling on the generosity of locals to donate any unused blankets, sleeping bags, swags, tents and warm clothing to support those in our community doing it tough this winter.

"With cost-of-living pressures pushing household budgets to the brink this winter, more and more people will become reliant on services provided by various welfare organisations for assistance, such as St Vincent De Paul," Mr Bull said.

"Donations that can provide shelter and warmth will make all the difference to our most vulnerable and will be welcomed with open arms by the hard-working team at the St Vincent De Paul Assistance Centre, Bairnsdale.

"Every night, thousands of people are experiencing homelessness and forced to sleep rough in Victoria and these people will feel the full brunt.

"Many households are living week-to-week or pay cheque-to-pay cheque and some East Gippsland families are forced to make the difficult decision between putting food on the table or heating their homes this winter.

"Making a difference can be as easy as donating unused (or old but good quality) winter warmers, which will be handed out by the fantastic volunteers operating from the Macleod Street site.

"Donations are asked to be dropped off at the St Vincent De Paul Assistance Centre in Macleod Street in Bairnsdale Monday to Friday between 10am - 2pm, not the retail op-shop operating in Main Street.

"I urge locals to see if they have any unused items around the home which they can spare to donate to support those less fortunate," he said.



Nationals State MP, Tim Bull, together with St Vincent De Paul volunteers, Kerrie, Jo and Trish, are calling on the community to donate any unused warm items for those less fortunate this winter.

More funds for fire affected communities

The Board of the East Gippsland Community Foundation is pleased to announce that its fourth round of community grants has been awarded.

Grant Funds will be disbursed from the East Gippsland Community Bushfire Disaster Relief Fund, of which the East Gippsland Community Foundation acts as the trustee. Awarded activities and projects are due to be completed, and to achieve the predetermined community benefit, within a twelve-month period.

Chair Barry Henwood stated that the Foundation continues to build relationships and partnerships with local organizations and intends to be here for the long haul.

“Congratulations to all those local people who are working so hard to continue the rebuild, plan and improve resilience and grow community capacity.”

“We will try to keep it as simple as possible for those weary volunteers.”

Local grant recipients in the East Gippsland Community Bushfire Recovery Grants are:

- Bruthen Mechanics Institute and Recreation Reserve Committee Incorporated (Bruthen Mechanics Hall renovation project) \$40,000
- Buchan Valley Golf Club auspiced by the Buchan Gelantipy District Renewal Group (Water Tank Resilience Upgrade) \$7,150
- Cann River Community Centre Inc (Cann River Community Centre kitchen upgrades) \$40,000
- Clifton Creek Community Hall and Recreation Reserve, Association (Community Stage @the Recreation Reserve, all abilities access & equipment for multi-purpose courts) \$40,000
- Community Centre Swifts Creek Inc. (Childcare Essentials) \$22,105
- East Gippsland Landcare Network Inc (Banking on the Future - East Gippsland Community Seedbank project) \$40,000
- East Gippsland Rail Trail Committee of Management Inc (Trail vegetation control and enhancement, Stage 2) \$40,000
- Mossiface Public Hall Reserve (Mossiface Hall Upgrade - windows & access ramps) \$40,000
- Nowa Nowa Community Development Group (Nowa Nowa Hall upgrade) \$38,000
- Omeo Recreation Reserve Committee of Management (The Perfect Finish) \$30,000
- Orbost Exhibition Centre (heART of our recovery and transition) \$40,000
- Sarsfield Community Association Inc. (Sarsfield Hall and surrounds: Lighting &

Maintenance Upgrades) \$7,918

- Tambo Valley Bowling Club Inc (Kitchen upgrade) \$18,890
- The Bemm River Community Recreation Centre Inc (Health & Wellbeing Kitchen upgrade for social connectedness) \$40,000
- VIC SES Bruthen Unit (Vic SES Lakes Entrance Satellite Unit) \$30,000

Separate from the formal grant round, the Foundation is working directly with the ten Community Recovery Committees (CRCs) across East Gippsland. These were set up by Bushfire (Emergency) Recovery Victoria following the Black Summer Fires. Project Partnerships between the CRC's and the East Gippsland Community Foundation are being scoped with community representatives to advance their priority projects outside a formal competitive grant round. Up to \$50,000 per CRC will be made available.

St Matthew's Anglican Church Bruthen

Services every Sunday at 9.30am except the fifth Sunday.

Services also at St Columb's Swan Reach on the second and fourth Sundays at 11.15am, & at St Mary's Buchan on the third Sunday every second month at 2.30pm commencing in February of each year.

Volunteers always welcome at the Bruthen Op Shop.

ALL WELCOME!! Please come and you are most welcome to contact: The Rev'd Brian Norris on 0418 633446

Bruthen Inn Hotel



Kitchen is open 7 days

Lunch 12-2pm (excl. Tues) Dinner 6-8pm

Tuesdays open from 5pm

Friday night raffles supporting local sporting clubs—10 draws.

Catering for private functions and community meetings

Courtesy bus operates Wed, Fri, Sat nights only

For enquires or bookings contact Bruthen Inn Hotel.

Cheers and beers, Stretch

Phone (03) 51575201

Taste of East Gippsland in Winter

Experience "How We Winter" in East Gippsland with a smorgasbord of epicurean experiences at this year's East Gippsland Winter Festival, running from June 9 to July 9.

Come and celebrate the abundance of quality East Gippsland produce amidst art, music, nature and wellness experiences. This year's East Gippsland Winter Festival program is a SHOWCASE of award-winning local produce, wine, craft beer and micro-distilled spirits. The East Gippsland Winter Festival celebrates the people, places and produce of the region and aims to connect visitors with local chefs and producers through one of the most diverse winter festival programs in Australia.

Epi-curious highlights of this year's festival program include:

- 10 June: Deep In The Weeds at Sailors Grave Brewing, Orbost – C.W. Stoneking and His Primitive Horn Orchestra will headline Sailors Grave's infamous 'Deep in the Weeds Festival', held in a 130-year old butter factory on the banks of the Snowy River. Dinner catered by Meatsmiths Melbourne with desserts from The Lindenow Long Paddock.
- 10 June: The FAT Ride: Nowa Nowa to Orbost – Riders will cruise the East Gippsland Rail Trail from Nowa Nowa to Orbost enjoying pop up Food, Art & Tunes (FAT) experiences along the scenic 40km route. After bike-ride beers and return transfers available.
- Friday 16 June: The Nicholson River Trestle Bridge Long Lunch (first event!), – take in the glorious views, 50m above the river, while dining on the historic Railway Bridge. Enjoy a three course collaboration lunch showcasing Gippsland's best produce, beers and wine. Acoustic live music tops off one the most unique dining experiences in Victoria.

- Sunday 18 June: Cassilis Estate Wine and Cider, Swifts Creek - warm up and fill up in the orchard by the fire, with craft cider, local music and a La Piadina (Italian-style wood fired flatbread) at the foothills of the wintery alpine slopes.

- Tuesday 20 & Wednesday 21 June: Shearing Shed Lamb Feast, Forge Creek – an authentic Paddock to Plate experience at a working shearing shed. Enjoy a variety of lamb dishes, then gather around the fire with local wines and beers to chat with Farmer Neil of Forge Creek Lamb. You can stay the night in his converted water tank accommodation if you have one too many.

- Thursday 22 June: Sake & Soak By The Fermentary, Metung Hot Springs – more details coming soon!

- Friday 23 June: Celebrate the Local: Tambo Valley Honey, Bruthen - savour a night with Tambo Valley Honey at their new eatery and honey centre, complete with working bee hive. Watch the bees hard at work (behind glass) as Chef Sam Mahlook prepares a five course local inspired degustation with matching wines.

- Sunday 2 July: Yin and Gin, Metung Hot Springs & Country Club – welcome some bathing, balance and connection into your day guided by Poeta Hope from House of Yoga Metung. Release body and mind through a series of nourishing Yin Yoga positions and finish with a Gin Cocktail, thanks to local distillers Logan's Micro Distillery limited edition East Gippsland Winter festival batch.

Other produce dining showcases include the Duck & Pinot Dinner at Northern Ground (Friday 30 June) while seafood lovers can indulge at Sodafish's Winter Seafood Feast'ival, (June 30) aboard their floating restaurant in the Lakes Entrance Middle Harbour. If new flavours and new experiences are what you are after this winter, come see 'How We Winter!'

Are you ready Bruthen for a FUN TIME at the East Gippsland Festival

Once again Bruthen is putting on a magical Medieval Winter Fire Festival on Saturday, June 24. Free family fun for everyone, Rug up and come down to the main street and the police paddock at the back of the hall for a great afternoon and evening of excitement and entertainment.

WHAT'S HAPPENING WHEN ?

The Market

The festival kicks off at **11am with the Bruthen Neighborhood House Market**, showcasing local artists, makers and growers, food and drink with a medieval theme. There will be a **pop up lantern making area** and craft activities, games and entertainment by the Morris Dances.

3:00pm The Welcome to Country

After that the Medieval re-enactment games begin in the Police paddock.

5 pm Lantern Parade

Gather at the **Hall around 4:15 with your Lantern to get your lights** as the parade with start at 5pm

Then the Evening Entertainment continues

The bonfires will be lit by Bruthen CFA and a local food feast and drinks will be available for purchase.

Prizes for best costume and all round renaissance revelry. Best costumes for Adult and Child
Sword fighting – re-enactment

Trebuchet a Duck . Ducks will be the target for the trebuchet. Buy your duck for \$5. And be in the running to win some interesting prizes

AND more.....Wacky Wombat fire sculpture show, music and join in for some fun with the Morris dancers.

Entry to the market and the evenings activities is completely free, though a gold coin donation would be greatly appreciated.

So dress up and bring your family to the festival!
Parking will be along Church Street, Ronald Street and Main Street (limited).

The East Gippsland Winter Festival runs from June 9 to July 9, and features an amazing program of over 100 events right across East Gippsland. Check it out here!

<https://egwinterfest.com.au/program/>

EAST GIPPSLAND WINTER FESTIVAL IN THE HIGH COUNTRY

30 JUNE - 2 JULY

SWIFTS CREEK
30 JUNE, FRIDAY NIGHT
5.30pm onwards

WINTER LIGHT LANTERN DISPLAY
Great Alpine Gallery evening celebration



CASSILIS
1 JULY, SATURDAY MORNING
10.00am - 2.00pm

CASSILIS MARKET DAY
Cassilis Recreation Reserve



CASSILIS
1 JULY, SATURDAY AFTERNOON
1.00pm - 3.30pm

ON FOOT IN THE HIGH COUNTRY
The Cassilis Goldfields - curated walk

SWIFTS CREEK
1 JULY, SATURDAY EVENING
5.00pm

GOLD RUSH BONFIRE AND FOOD
Junction Hotel carpark.
6.00pm

CÉLTIC BAND MOLLIMOR LIVE



OMEO
2 JULY, SUNDAY MORNING
10.00am - noon

ON FOOT IN THE HIGH COUNTRY
Oriental Claims - curated walk

SWIFTS CREEK
2 JULY, SUNDAY AFTERNOON
2.00pm - 3.00pm

ON FOOT IN THE HIGH COUNTRY
Poets Walk - curated walk



All walks are free, but bookings are essential.
Go to www.egwinterfest.com.au for details and bookings.

EAST GIPPSLAND WINTER FESTIVAL

9 JUNE TO 9 JULY



Funds for Mollimor's performance have been made available by East Gippsland Shire Council (EGSC) from Emergency Recovery Victoria (ERV), and will be administered by the East Gippsland Community Foundation (EGCF).



Cultural Day at Tambo Primary School



On May 10, Tambo Upper Primary School students had a Cultural Day.

Uncle Hugh, Uncle Rex, Alice, Auntie Julie, Mrs Murrell, Uncle Wayne, Mr Chandler and Auntie Lyn came to our school to teach us about the wonderful Indigenous culture. We got to design boomerangs with Uncle Hugh and we were challenged to create a story or something meaningful on our boomerang. The most creative design won a little boomerang to take home. Uncle Rex played games with us including how to hunt for Kangaroos. Alice brought in a beautiful possum skin cloak that she shared stories about and we had the opportunity to put our own Tambo story on the cloak. Auntie Julie and Mrs Murrell allowed us to dive into the world of paint and we created a NAIDOC banner. Uncle Wayne taught us an indigenous song, we had to clap along and learn the lyrics. He also played the didgeridoo to us. Our Principal Mr. Chandler showed us a video about the dreamtime story Tiddalik the Frog. Overall, we all loved the Cultural Day and we loved having all our guests here. My favourite activity was learning and designing the possum skin cloak.

Chili Kavadis.



Yesterday we had a Cultural Day at school. My favourite activity was the hunting kangaroos because we got to throw tennis balls at basket balls.

Mason 6.

Yesterday we had a Cultural Day at school. My favourite activity was doing handprints because it was very fun drawing on my hands.

Ruby 7.

Yesterday we had a Cultural Day at school. My favourite activity was Tiddalik because I had to make Mila laugh; it was fun.

Eliana 6.

Yesterday we had a Cultural Day at school. My favourite activity was the boomerangs because I got to draw on my boomerang.

Lucus 6.

Yesterday we had a Cultural Day at school. My favourite activity was the possum skin because it was fluffy.

Mila 5.

Yesterday we had a cultural day at school. My favourite activity was learning songs.

Kayla 5.



On Wednesday May 10, Tambo Upper PS had local indigenous people come to our school to teach us about their culture and stories.

One of my favourite parts of the day was talking about the possum skin cloak. It was nice to listen and learn about the traditions that they would do. After that, I learnt that years ago the aboriginal people used weapons such as spears, shields and boomerangs to hunt for their food. The dancing was amazing, and I learnt a new Gunaikurnai song.

Nina Felmingham-HOF

BRUTHEN PRESENTS

BRUTHEN MEDIEVAL FIRE FESTIVAL

SATURDAY 24TH JUNE

12PM-9PM

BRUTHEN MECHANICS HALL & POLICE PADDOCK

12pm: Community Market

Lantern and craft workshop

Morris Dancing

3pm: Welcome to Country

Duck Trebuchet

Medieval re-enactment games

5pm: Lantern Parade

Food Feast

Wacky Wombat Fire Show

Music, dancing, entertainment

*East Gippsland
Winter Festival*
9th June to
9th July 2023

PRIZES FOR BEST
MEDIEVAL COSTUMES!



This project is jointly funded by the Victorian Government and Commonwealth Government under the Commonwealth-State Disaster Recovery Funding Arrangements



Lions District 201V3 disaster response tool library

Hi All. We are just reminding people that the Lions District Tool Library is still available for anyone in the local community to borrow tools from.

Most of the tools were purchased by grant from the Lions Clubs international Fund as well as from donations made by Lions clubs in the Lions 201V3 District after the Black Summer bushfires.

The Library is located at the Sarsfield Recreation Ground.

We have a wide variety of power and manual tools as well as a chainsaw, drills, whipper snippers, compressors and a log splitter that can be borrowed. We also have a state of the art motorised star picket driver that has still never been used!

The process to borrow the tools is straightforward; simply go to the Sarsfield Community Association Website. Click on Where to find support, this takes you the page listing for support services and a booking link can be found towards the bottom of the page. It opens the list of available times to come to the library to collect or see if there is a tool for your job . It does say Lions Sarsfield Tool Library but is open to people who don't reside in Sarsfield (wider Bruthen District is fine)

Bruthen Lion, Allan Knewstubb coordinates the Library. You can also contact him to discuss what is available and to arrange a loan of a tool/tools on 0400 937 655.

Cheers, The Bruthen Lions Team



NEIGHBOURHOOD HOUSE NEWS



Bruthen & District
Neighbourhood House

Coming up on the BDNH calendar:

June

Tuesday 13th

Bruthen Remembers

10.30am at Community Hub

Thursday 15th

Bruthen Bookies

1pm–3pm at Community Hub

Mondays

Bruthen Men's Shed

9am–1pm at Community Hub (rear)

Wednesdays

Sew What at Creative Space

1pm–3pm

Wednesday Evenings

Young People's Project

4.30pm–7:00pm at Creative Space

Enrolment required

Fridays

Mums & Bubs at Community Hub

9:30am–11am

June

Saturday 24th

Medieval Festival Market

12:00pm–4:00pm, Bruthen Gardens

July

Wednesday 5th

Open House Craft Fun Day

10am–3pm at Community Hub

BDNH Locations

Community Hub

36 Main Street Bruthen

9am–1pm Monday (Men's Shed only)

10am–4pm Tuesday–Thursday

10am–1pm Friday

Creative Space

51 Main Street Bruthen (rear)

Thursday–Friday 10.30am

Ph: 03 4141 5302 (Community Hub)

Mobile: 0497 544 490

Email: info.bdnh@aussiebb.com.au

<https://www.facebook.com/bruthenhouse>

<https://bruthendistrict.org.au/bruthen-district-neighbourhood-house/>

Bruthen Mums & Bubs

TAKE A BREAK TO
CONNECT, SUPPORT, PLAY & GROW
(Dads & Expecting Mothers Welcome)

Morning tea provided by BDNH
Toys & Books provided
Nappies and Wipes available

Fridays from 9.30am–11 am

36 Main St, Bruthen

POWER SAVING BONUS **GET ANOTHER \$250**

is back! **WE CAN HELP YOU CLAIM**



New round open
24 Mar to 31 Aug
all Victorian households can apply again.

We can help!
Come by the Neighbourhood House with a recent power bill and use our computers to apply.

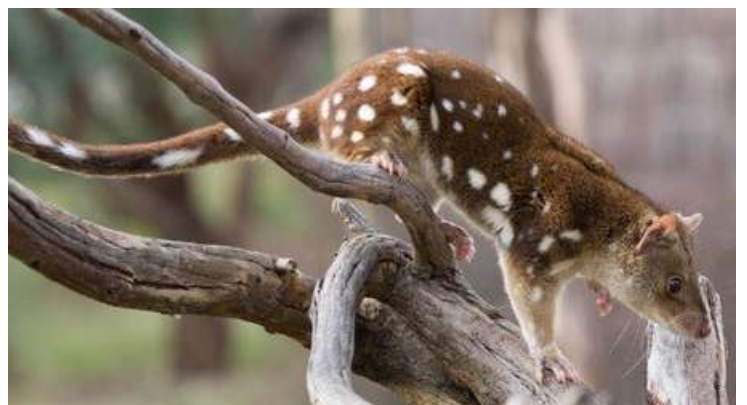
D J L N I B D K H T P M U W H
W E P O M X F D I C V U C Y W
G O R S R U Q G U R K L F I K
C I L E R T E V P S R O O F D
A M P L G R N R H T P S U S L
R A P P O N N O C T U R N A L
N R N I S H A G C L L O U Q N
I G Y T N L P D T A S T O P S
V O T T P K A S N W N A S A Q
O R N I I V E N Q E S D V Y W
R P X B H R A B D C W E N Q H
E W F T O I W L D K N R C G F
K D E F T H R E A T S P Y B D
J E T A T I B A H U R W W P E
T I C F Z Y V G P S B S H R H

- | | | | | | |
|------------|-----------|-----------|-----------|---------|---------|
| CARNIVORE | FORREST | HABITAT | NOSE | PROGRAM | TEETH |
| FUR | HOLLOW | PINK | QUOLL | THREATS | SPOTS |
| ENDANGERED | GIPPSLAND | NOCTURNAL | PREDATORS | TIGER | CONTROL |

Target Words

P	R	I
S	A	A
U	L	M

How many words of at least Four letters can you make? Each word must include the centre letter. And there are at least two 9-letter words! No abbreviations, no capitalised nouns.



SPOTTED-TAILED QUOLL



Dasyurus maculatus

About Spotted-tailed Quolls

Spotted-tailed quolls, or tiger quolls, are nocturnal, carnivorous marsupials and are rarely seen during the day. Their coarse red-brown fur is covered in white spots that extend along their tail. They have large eyes, a pink nose, sharp teeth and are more than 50% larger than their other three quoll cousins.

Spotted-tailed quolls are the largest marsupial carnivore on mainland Australia. Their diet includes small to medium-sized mammals, reptiles, birds, eggs and dead animals.

They live in a range of forest habitats, from rainforest to open woodland that contain rock crevices, caves, hollow logs, burrows and tree hollows. In Victoria, spotted-tailed quolls are known to live in areas from north-east and east of Melbourne through to the Victoria-New South Wales border, including northeastern Victoria and East Gippsland.

Living under threat

The spotted-tailed quoll is considered Endangered in Victoria. They face a range of

threats, including:

Competition and predation from introduced predators.

Land clearing and loss of habitat.

Fire.

Conservation in East Gippsland

The last main strongholds for this species in Victoria are in the North East and East Gippsland.

Monitoring the abundance of spotted-tailed quolls and predators is undertaken as part of the Southern Ark Project in areas south and east of the Upper Snowy region. The Department of Environment, Land, Water and Planning have been monitoring spotted-tailed quolls in the Upper Snowy region since 2009. Remote cameras record sightings inside and outside predator control program areas to determine the impacts and effectiveness of predator control efforts.

PUBLIC NOTICES



Wattle Park 3 day Practical Grazing Masterclass

Bengworden, Victoria - 3 day on farm Masterclass 4-6 Aug 2023

HandfortheLand is holding a 3 day Practical Grazing Masterclass demonstrating low cost, low risk grazing management

3 day discount \$2800 ex GST per person
Single days \$1000 ex GST, 2nd people from same business @1/2 price.

We will teach you the skills required to be successful in:

- achieving animal performance and health by monitoring gut fill, body condition, dung scores and contentment
- building land health- with a focus on plant utilisation and stock density
- knowing what to look for, monitoring change and taking corrective action
- individually tailoring fencing and water design that will work for you business

CONTACT US FOR MORE DETAILS

W: www.handfortheland.com
E: graemehand9@gmail.com
M: 0418532130



Songs from the East

Bruthen Inn Hotel
Sat 17th June 3:30pm- 11pm
\$25 early bird - \$30 regular
<https://events.humanitix.com/songs-from-the-east>

IO
Mike Elrington
Misty Harlowe Band
Todd Cook & the Rufous Whistlers
Raven & the Dove
Organic Joe
Elfian

proudly supported by

Say "no thank you" to single use plastic takeaway items and bring your own



Did You Know?

Single use takeaway items - cutlery, plates, straws - cannot be recycled and end up in landfill, whereas compostable cutlery takes about 180 days to break down. or better still, real cutlery can be used again and again!

For more information contact Council or visit our A - Z - Where to next? on our website.

Rethink & Recycle with the

WASTE RESCUER

Tambo Waste
EAST GIPPSLAND SHIRE COUNCIL

Bring your own coffee cup for takeaway.



Did You Know?

1 billion disposable cups go to landfill every year in Australia and each cup is only used for 10 to 20 minutes.

For more information contact Council or visit our A - Z - Where to next? on our website.

Rethink & Recycle with the

WASTE RESCUER

Tambo Waste
EAST GIPPSLAND SHIRE COUNCIL

Bruthen - Bairnsdale Bus Timetable Dysons Bus Lines Ph: 5152 1711

Bruthen to Bairnsdale Morning	Monday & Friday AM	Tues, Wed, Thurs AM
Bruthen (opp) General Store	08:10 am	09:50 am
Bairnsdale, Corner Main & Bailey St	08:30 am	10:20 am
Bairnsdale Train Station	08:35 am	10:30 am
Bairnsdale to Bruthen Afternoon	Mon to Thurs PM	Friday PM
Bairnsdale Train Station	1:25 pm	3:40 pm
Corner Chemist (Service & Main Street)	1:30 pm	3:45 pm
Bruthen, Station & Great Alpine Rd	2:00 pm	4:15 pm

Mobile Library



The mobile bus service provides an opportunity to not only use the library service, but to engage with them on Council matters. All community members welcome. See the schedule below for when one of our busses is visiting your community.

What you can do at the mobile service

- Borrow books
- Pick up a Council newsletter
- Lodge a report or request
- Pay an account / make electronic payments
- Make enquiries, collect and lodge application forms
- Register your dogs and cats
- Access and complete surveys
- Learn about and provide feedback on projects
- Use a computer
- Have a chat and much more

Wed	Tambo Upper** (near school)	9.00 am – 9.45 am
	Bruthen (Main Street)	10.00 am – 11.15 am
	Nowa Nowa (Mingling Waters C/park)	1.30 pm – 2.00 pm
Thu	Bruthen** (near kinder)	10.45 am – 11.15 am

*Sites marked ** are not visited during school holidays*

Phone 51524225 or 1300 555 886
www.eastgippsland.vic.gov.au



OPEN: Mondays & Wednesdays from 8.00am to 12 midday

GP Clinic: Wednesday by appointment only. Call 5155 8300 and select option '1'. Please make sure you let our Customer Service team know you would like your appointment in Bruthen.

Community Health Nurse: Monday and Wednesday, \$12 per consult or \$6 concession. Note: services will not be denied if you are unable to pay. Call 5155 8300 and select option '1'.

Maternal & Child Health: Once a month on a Tuesday by appointment only. Call 5155 8300 and select option '4'.

Room & Bus Hire: all bookings are to be directed to our Customer Service team on 5155 8300.

Pathology collection: Monday and Wednesday from 8.00 to 11.00am. Nurse fees apply.

These services are for Bruthen and district residents. For more information about GLCH, our services and programs, please visit glch.org.au or find us on social media.



Group meetings
3rd Wednesday of the month
@ 7 pm

Bruthen & District
Neighbourhood House

New members welcome

For details contact
landcare.bruthen@gmail.com

EVENTS & NOTICES

Injured Wildlife Rescue

When you find injured wildlife please keep these details in case of emergency:

WILDLIFE SHELTERS

Jade Whittingham

Wombat Wisdom, (Bairnsdale), 0473 446 161

Holly Corbett

Holly's Wildlife Rescue (No bats) (530 Bairnsdale Dargo Rd Hillside 3875), 0432 539 408

Suzie

Waterholes Wildlife Shelter Clifton Creek Koala specialist, 0447 470 905.

Geoff Nicol

Treehouse Wildlife Refuge Metung, 0419 345 820

Birds, wombats, kangaroos, etc

Tai Chi

For all those people wanting to warm up this winter, Tai Chi is a series of gentle movements to encourage flexibility and mindfulness. Yes, the space is heated, and classes are on Mondays from 10.30 to 11.30am in the Bruthen Mechanics Hall.

BRUTHEN LICENSED POST OFFICE

(Est.1893)



East Link Toll Passes

Photocopying And Facsimile Service

CBA, NAB, WestPac Banking, Western Union Money Transfer, Bill Payments, Post Bill Pay, Stationery, Greeting Cards, Wrapping Paper, PostPak & Australia Post Postal Services

Howard & Jenny Young, Phone/Fax (03) 5157 5209

Increased patronage is needed for the class to continue, so please think about trying it out. Any enquiries please call 0439 812 166.

Positions open on Council agriculture committee

East Gippsland Shire Council has announced that the Expressions of Interest for the three positions on its Agriculture Sector Advisory Committee has been extended for a further three weeks to encourage more applications from agriculture operators, agribusiness owners and community members with relevant experience and interest in the agriculture sector.

The committee was formed in 2021 and serves as an important forum for Council to gain insight into the issues impacting the agriculture sector.

The new members will work alongside eight existing members, including the Mayor, Cr Mark Reeves, Cr John White, Council CEO Anthony Basford, General Manager Place and Community Stuart McConnell, and industry representatives from East Gippsland Catchment Management Authority, Agriculture Victoria, and Food and Fibre Gippsland.

Expressions of interest will be accepted by Council until June 21, 2023.



Sew What

Join the ladies for sewing, knitting, crochet, conversation and more

Wednesdays 1-3pm

Creative Space Rear 51 Main Street

In event of an emergency

Bruthen has 3 Heart Start Defibrillators

Located at

- Bruthen General Store**
6.30am – 6.15/7.15pm (7 days)
- Bruthen Rec Reserve**
for sports events / Caravan Park
- Bruthen Police Station**

Note: under 24/7 video surveillance



Darren Chester

Putting Locals First

#lovegippsland



INATIONALS for Gippsland

www.darrenchester.com.au

TRADES AND SERVICES

Recycle your batteries



Did You Know?

Batteries are no longer accepted in landfill as they leach toxic chemicals into our environment. They can be disposed of for free as e-waste.

For more information contact Council or visit our A - Z - Where to next? on our website.



East Gippsland compost rebate

\$40 off a compost, worm farm, bokashi bin, pet poo bin and more!

Visit <https://www.compostcommunity.com.au/east-gippsland.html> for your rebate



Chris Fella
Qualified Carpenter
Renovations, Decks Pergolas, New Houses, Fencing
20 Year Experience
TFN 195 357 871
MB. 0412 9912 60 PH. 5157 5198
E. chrisfella@bigpond.com

ACG

KITCHENS & CABINETS

Adam & Carly Greenwood
Email – info@acgkitchens.com.au
Phone – 0402 137 148
Tambo Upper

RIVIERA GAS SERVICES

Peter Weeks

Specialising in Gas Installations
Conversion and Maintenance
General Plumbing

Lic No 21065 **Mobile: 0418 516 745**

Bruthen Garden Supplies

NOW OFFERING WATER CARTAGE

- 13,000L WATER CARTAGE.
- DOMESTIC & GENERAL 7 DAYS

Tip-trucks 6m³ & 10m³, Bobcat, Excavator, Post Hole Boring, Trenching, Slashing.
SUPPLIERS OF SAND, SOIL & MULCH



WE NOW SELL CHOOK PELLETS

ALL AREAS



76 Main St, Bruthen
M: 0429 944 297



C-13151

TAMBO RAMBLER

Tambo Rambler Advertising Costs

BLACK AND WHITE Advert Options

- ⇒ 9 x 5 cm - **Cost \$10.00**
- ⇒ 9 x 8 cm - **Cost \$15.00**
- ⇒ 1/4 page - **Cost \$25.00**
- ⇒ 1/2 page - **Cost \$50.00**
- ⇒ Full page - **Cost \$100.00**

25% discount for BDCA Members,
(only applies to black and white adverts)

COLOUR Advert Option 1: Full Page

- ⇒ One full page, full colour feature / advert placed on the inside cover of the Tambo Rambler
- ⇒ Plus acknowledgement as the major sponsor for that month's edition of the Tambo Rambler
- ⇒ **Cost - \$165 per edition**

COLOUR Advert Option 2: Half Page

- ⇒ One half page, full colour feature / advert placed on the inside cover of the Tambo Rambler
- ⇒ Plus acknowledgement as the sponsor for that month's edition of the Tambo Rambler
- ⇒ **Cost - \$100 per edition**

COLOUR Advert Option 3: Quarter Page Full Colour Promotional Package

- ⇒ One quarter page, full colour feature / advert placed on the inside cover of the Tambo Rambler
- ⇒ Plus acknowledgement as the co-sponsor for that month's edition of the Tambo Rambler
- ⇒ **Cost - \$65 per edition**

Closing date for July issue is June 25.

Please send your articles by e-mail only to:
tamborambler@gmail.com
(Word, Publisher, JPG or PNG format with photos please
PDF format will also be accepted.)

Tambo Rambler is distributed across East Gippsland via email and on the web page at
<https://bruthendistrict.org.au/tambo-rambler/>

We also distribute to Government representatives, Bairnsdale Library, Victorian State Library, and local Historical Societies
Hard copies are available in Bruthen at the P.O, General Store, Oppe Shoppe, Bakery, Blue Bee, Hotel and Neighbourhood House for a gold coin donation.

The Tambo Rambler Committee and BDCA do not take responsibility for opinions expressed by contributors to the Tambo Rambler. The Editors reserve the right to reject articles and advertisements and to edit submissions if necessary

All submissions must carry the author's full name, address and phone number. They may be published anonymously if preferred.

Do trees communicate

Do you talk to your tomatoes?

Do you hug trees?

Are you mad?

Does it matter?

No

But trees do talk to each other through an extensive network of communication channels that have only recently been discovered.

Firstly, if you look how gum trees grow you can see that they don't grow into each others space. They grow around each other and leave some clear space where each can get light on their leaves.

They have hormones and growth factors that react to their environment and control their development.

Secondly, what goes on underground around a trees roots is truly amazing. The network of communication channels in the soil rivals our personal electronic systems but it does not rely on moving electrons down wires or through switches.

It is all accomplished by fungi, moulds, bacteria, viruses and microscopic life forms that live in a symbiotic existence with a tree's roots in the soil, all dependent on each other but sharing and distributing resources.

This is a chemical network that has no controlling computer or brain but it reacts in a way that selflessly benefits the dominant partners (the trees and plants).

Mushrooms and other fungi are visible signs of the network and have enormous strands of living tissue in the form of hyphae and mycelia that send chemical signals and nutrients to the roots of trees.

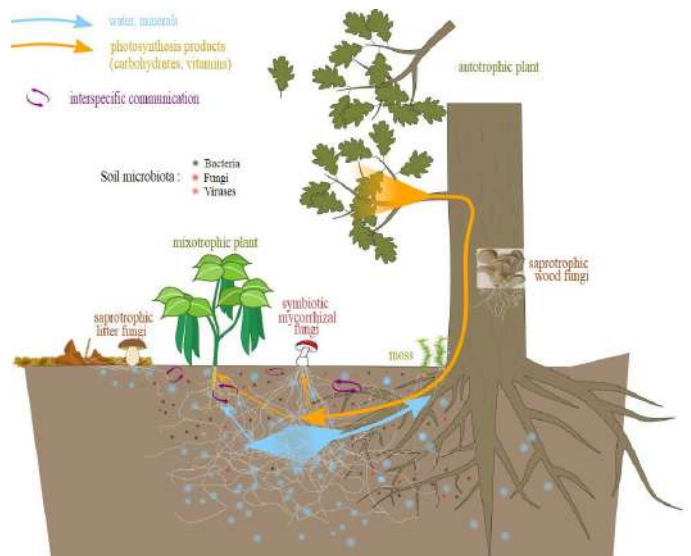
These living strands are equivalent to our more familiar communication networks and serve a similar purpose of delivering support services to their community.

So do trees talk to each other?

You betcha!

Just look out the window and you will see what they are saying!

Geoff Nicol



Fairy Dell Flora Reserve reopens



Winter Fire Festival Lantern Making Project

