
TAMBO RAMBLER

Bruthen and District Newspaper
Produced by Bruthen and District Citizens Association

July

2023

NUMBER 287

Shining Knights light up Winter Festival



The Tambo Rambler is proudly sponsored this month by Elders Real Estate Lakes Entrance & Metung

The Tambo Rambler would like to acknowledge the Gunai Kurnai People, the Traditional Owners of the land on which we gather, and pay our respects to their Elders both past, present and emerging.



Are you looking to Sell, Lease,
Buy or Rent a property?

CONTACT OUR TEAM TODAY



Visit our website:
lakesentrance.eldersrealestate.com.au



INSTAGRAM



FACEBOOK



YOUTUBE

Elders
Real Estate

03 5155 3133

1/521 Esplanade, Lakes Entrance VIC 3909
lakesentrance.eldersrealestate.com.au
admin@elderslakesentrance.com.au

Medieval Fire Festival ignites Bruthen

What an awesome June we have had.

Starting on June 16th with our first Music Café of the year starring the dynamic Indigenous duo, The Merindas, with support act Christine Watterson from Nungurner, we were off to a great start. The hall was full and as the night went on the dance floor was also full. People from 5 or 6 to 70 plus were having a ball. The mix of R&B and soul with electronic and dance music with lyrics sung in a mix of English and Noongar language was a delight to listen to. The crowd all walked out with a smile on their faces, which is what the A&E team love to see. This was the first of 3 Connecting Places events planned for this year. A magic and comedy show, Sass and Secrets, is coming in August and a family Shadow Puppet show, Crow Kid, in September. A grant from Emergency Recovery Victoria and sponsorship by Regional Arts Victoria has enabled the Arts and Events Council to bring these events to Bruthen.

Our big event for the month and the year, was the Medieval Winter Fire Festival on Saturday the 24th. And what fun everyone had! A huge crowd converged on the police paddock. There were knights in armour, Vikings, children in costume and lots of people dressed to the period. To be standing in the crowd felt a bit like being on the set of TV show Vikings.

The East Gippsland Historical Re-enactment Society had displays and demonstrations of medieval skills and crafts plus the Sword fights including an exciting flaming sword fight after dark.

Bruthen CFA provided a toasty bonfire and kept the fire pots burning all evening. About 140 people joined in the Lantern Parade which included the Daniel Gunson homes as part of the route. Food and drink trucks meant that everyone ate well. The plastic ducks came out for an airing and became the target for a trebuchet shooting tennis balls, creating some fun for the big crowd. Wacky Wombat's fire show was the perfect grand finale to the night.

They say that a child is raised by a village and the same thing can be said about a festival. So many Bruthen people stepped up to help over the weekend. A huge thank-you must go to the wonderful people who helped out with setting up on Friday and Saturday morning and then turning up again on Sunday to put everything away. Also, the CFA for the fires, The Bowling Club, Bruthen Primary School and The Lions Club for their food stalls, Tash, Joe and Geoff for taking photos, Tracey, Michelle, Julia, Gabby, Dave and Paul for helping out in many different ways and of course our Arts and Events Team, especially Jeff, Lesley, Phil, Lauren, Allison, Jon and Amanda. And without the East Gippsland Historical Society the festival could not have had the Medieval theme.

Thanks to our sponsors the East Gippsland Shire and Emergency Recovery Victoria, and to Tambo Waste for providing 20 wheely bins.

Joy Manley
President

Bruthen Arts and Events Council Inc.



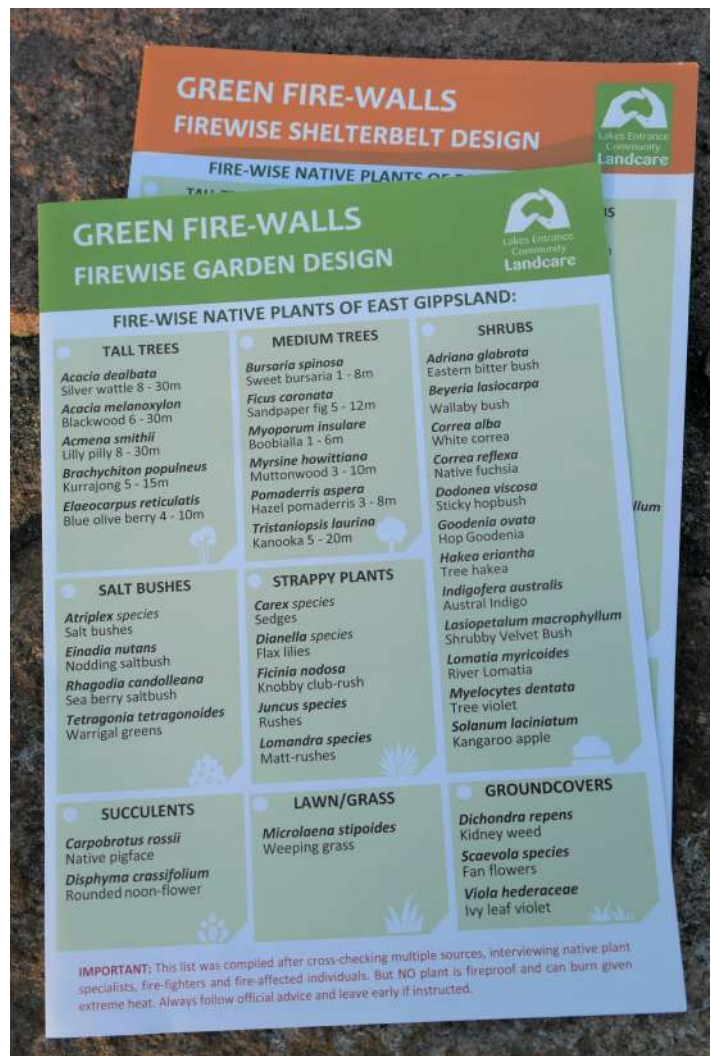
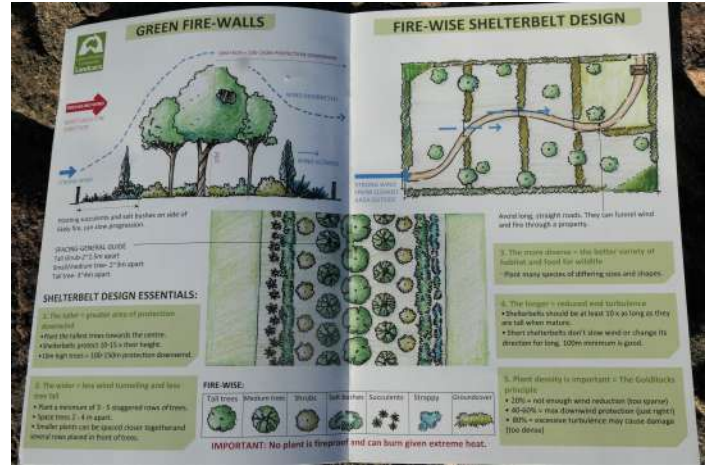
Firewise Gardening

An inspirational and very practical project at Nungurner Primary School offers lessons for anyone who is interested in learning about firewise design for their gardens or shelterbelts.

The students have been developing a 50 metre wide Firewise Garden in the grounds of the school, learning about indigenous fire resistant plants, seed collection and propagation, and design, preparation and maintenance of the site. There are around 30 Firewise plants including *Lomandra*, *Indigofera Australis*, *Kurrajongs* and *Dianella*. Local artist and educator Catherine van Wilgenburg volunteered her time to design the education program.

The project has seen a wonderful level of collaboration between the school and local residents and groups, including Nungurner Landcare Coastcare, Lakes Entrance Community Landcare, the East Gippsland Landcare Network, Gunaikurnai Land and Waters Aboriginal Corporation, Wildseed Nursery, Koorie Engagement Support Officers, and Nungurner CFA. The official opening by East Gippsland Shire Councillor Mendy Urie on Wednesday June 21 was a very happy and sociable occasion, with the children's pride in their project very evident.

For those who want to learn more, downloadable brochures and other audio visual resources can be found at <https://lakesentrancelandcare.com.au/>, while the two brochures (pictured) are also available at Bruthen and District Neighbourhood House.





Walking Track upgrades

Recent works have resulted in smoother walking and riding and cornering on the Tambo Riverloop track with grading, generous topping and compaction. Happy trails!

- Pam

Birding at Bruthen

Is anyone interested in checking out birds in the Bruthen area with a very friendly and knowledgeable bunch of people? Members of Birdlife East Gippsland will be exploring the Bruthen Walking Trails and the river walk on Monday, July 10. Visitors are always welcome, and can attend three outings before being required to join Birdlife Australia as a member if they wish to continue attending outings.

There's a fair chance you will recognise some local faces among the members!

Meet in the Main Street gardens at 9 am, and bring morning tea, lunch, folding chair, sunscreen, insect repellent, water and binoculars.

Outings are very rarely cancelled but will be automatically cancelled on days of Total Fire Ban, in seriously inclement weather or when government health regulations prohibit outdoor gatherings. If in doubt, check via email or Facebook.

Email: eastgippsland@birdlife.org.au

Website: www.birdlife.org.au/locations/birdlife-east-gippsland

Facebook: <https://www.facebook.com/groups/1451708148475799/?ref=bookmarks>



Phoenix Art Studio & Gallery

0438 035 777 61 Main Street Bruthen

Open Wednesday-Sunday

10.30am - 3.30pm

Arts ACTION

FREE Professional Development for Creatives

Provided by your local Council

Support for your pathways & projects

MORE INFO

SUBSCRIBE

popupart.com.au/artsaction

BlueBee CAFE TAKE AWAY

Monday - Thursday 6.00am - 3.00pm

Friday 6.00am - 7.00pm

Saturday 8.00am - 2.00pm

Sunday Closed

Phone Orders (03) 51575397 60 Main Street Bruthen



DINE IN

Stories of Influence showcase indigenous history

An opportunity to gather football/netball stories of the Lake Tyers Aboriginal Trust / Nowa Nowa teams will take place on July 21-23, 2023.

Stories of Influence is on again! The annual gathering of storytellers sharing stories hidden away under the bed in diaries, letters, newspaper articles and hearts and minds associated with life on Lake Tyers and Nowa Nowa.

The focus is the many stories of legendary football/netball players and games of Lake Tyers Aboriginal Trust/Nowa Nowa.

- In 1901, players walked to Cunninghame to catch a boat to Bairnsdale for a game.
- In 1908, they were denied the opportunity to accept an invitation to play the VFL.
- In 1913, Carlton VFL Premiers were stopped in Lakes Entrance on their way to Sydney due to a smallpox epidemic. Carlton invited Lake Tyers to a game. The team walked to the ground.
- In 1950, Ronnie Edwards kicked 43 goals, the highest in any senior game in Australian Rules football.
- The 1996-97 games in the Omeo League where Lake Tyers/Nowa Nowa club was banned.
- The last coach Les Wilkinson (Dec 2021) spoke with Malcolm McKinnon (2005) about the impact on community life in the film. *'Looking for a game at Lake Tyers'*.

"When I began speaking with people everyone had a story, or part of a story. Come and be a part of the yarning," said Helen Sheil, organiser of *Stories of Influence*.

"This event is an invitation for everyone to come and share their memories of football/netball stories and bring along memorabilia from the teams at Lake Tyers Trust/Nowa Nowa from the early days to the Omeo League 1990's. It is a gathering for the wider community to enjoy!"

Program:

Friday evening July 21, Lake Tyers Aboriginal Trust Hall; bring photos, articles, trophies, score sheets to begin conversations.

Saturday, July 22, Legends game at Swifts Creek Club, featuring old and young players wearing Sea Eagles Jumpers against Swifts Club wearing NAIDOC jumpers. Best and fairest in football and netball will receive Ronnie Edwards medals on the day.

Sunday morning July 23: Lake Tyers Aboriginal Trust Hall/Oval. Time to recognise those behind the game. Auskick and basketball for young folk. Cuppa and lunch.



21-23
July, 2023

Stories of Influence

Lake Tyers Aboriginal Trust
Time to share memories and memorabilia:
Omeo League, Football history

Friday 21 - 5:00pm - 8:30pm, Lake Tyers Trust Hall
Saturday 22 - Swifts Creek game and memorabilia
Sunday 23 - 10:30am Auskick game, Lake Tyers Trust

Scan to RSVP and confirm transport, catering requirements:



For More Details and Contact:
Facebook: storiesofinfluence / M. 0400 193 283

Find more information and rsvp through Facebook at 'Stories of Influence' or via Humanitix

website. Search 'Stories of Influence'.

Thanks to East Gippsland Shire Council, East Gippsland Community Foundation and Gippsland

Community Leadership Program who all contributed to this event.

Contact: Helen Sheil – Centre for Rural Communities - 0400 193 283

<https://ruralcommunities.com.au/stories>

Bruthen Seniors Club

This month's Seniors have a BBQ lunch at the Bowls club on Wednesday, July 5, at 12 noon.

A guest speaker from My Aged Care will be coming along; we could all do with a little help in staying up to date on the latest information.

On July 19, we celebrate Christmas in the Middle. Roast lunch with Christmas trimmings. Come along and join us for a warm winter get together. RSVP Sue 0407507849 for catering purposes.

BRUTHEN BOWLING CLUB NEWS

Since the last newsletter in April, our fortnightly BAREFOOT BOWLS nights have been well-attended, with a variety of excellent cuisines enjoyed by all. Needless to say, at this time of year, a number of our regulars have headed north for a bit of warmth!

Our green is still closed, and is waiting for a bit of warmth to come its way. This means it will be a longer job than first anticipated, and is unlikely to reopen before September.

Along with winter weather comes East Gippsland Winter Festival - a whole month-long series of events to cheer us through the gloom! Bruthen hosted the Medieval Festival on 24th June, and the bowling club assisted the festivities with a food stall, selling pulled pork rolls with a delicious home-made coleslaw, which proved very popular.

On the same night, our big winter raffle was drawn, and the winners were:-

1st prize - 2m of firewood + \$100 Bunnings gift card: Greg Leslie.

2nd prize - \$100 Bunnings gift card: Deb O'Keeffe.

3rd prize - Local traders gift hamper: Pam. (whose daughter lives in Nicholson).

Congratulations to the winners, and huge thanks to all who bought tickets. Big shout-out to Wayne & Clare Morgan for generously donating the firewood,

Bunnings for the gift cards, and to our local businesses who donated to the 3rd prize, and also helped to sell tickets. We are so lucky to live in a town where everyone pulls together.

To all the newcomers to Bruthen (as there have been several homes sold lately), WELCOME! Do come down and say 'hi' on a Thursday night. You will be made most welcome, and there is no pressure to play bowls - well, not straightaway anyway!! Or message us on Facebook, or phone Len Hooton (President) on 0427 188188, or Don Cameron (Secretary) on 0409 608782.



Textile recycling trial


Save up all your holey socks and pants! East Gippsland's textile recycling trial is starting in July!

The East Gippsland Shire Council will be collecting clean textile waste at the Bairnsdale Landfill from 1 July 2023. Clothing will be baled by the Bairnsdale Tip Shop and go to Textile Recyclers Australia (texrecaus.com), who will sort and recycle the fabric through various streams.

Find more information on our website: [Waste Education and Resources \(eastgippsland.vic.gov.au\)](http://Waste Education and Resources (eastgippsland.vic.gov.au)), where the detailed pricing will be published from 1 July 2023.

BRUTHEN OP SHOP
has RAGS available
great for any cleaning
\$8 a big black bag all cotton!

Tim BULL MP
 MEMBER FOR GIPPSLAND EAST

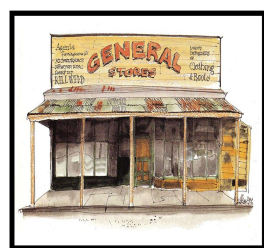


Servicing Bruthen and district community

143 Main Street, Bairnsdale VIC 3875
 03 5152 3491
 tim.bull@parliament.vic.gov.au

Funded from Parliamentary Budget

54 Main Street, Bruthen.
Open 7 days
Ph: 03-51575 415



- ✓ Your local ELGAS Distributor
- ✓ Supplier of local produce supporting local growers
- ✓ Provider of Butcher Supplied Quality Meats
- ✓ Supplier of gas heating, stoves, hot water systems
(provide a written quote & we will attempt to beat it)

Shop local – support local employment
email: BruthenGeneralStore@gmail.com

Bruthen Artist Gay Evans

Local artist, Gay Evans has been resident in Bruthen since the early 1980s when many creative people moved from Melbourne in search of an alternative life style. This move allowed Gay to study Photography at what was at the time, East Gippsland Institute of TAFE. In the year 2000, Australia Post held a nation-wide competition for artists to design a series of commemorative millennium postage stamps. Gay was one of many successful photographers with her portrait of Jack Laity – a well-known local Bruthen character who epitomized the Aussie country old-timer. Photography has always played a very important role in Gay's artistic life but evolved from being her major form of artistic expression to being more a tool of reference for painting as the years progressed. In the early 1990's she joined the Bairnsdale Naive Art Group and developed a very personal painting style. Her colourful, humorous comments on life were

exhibited locally and in galleries/art outlets throughout East Gippsland, resulting in many sales over the years.

What was originally the Naive Art Group continued in various forms with members branching out into a variety of styles, and Gay still hosts regular art sessions for a small group of friends.

With a great love of the nature and particularly trees, for the past eight years Gay has concentrated on landscape painting in oils, referencing places both in Australia and overseas. She continues to exhibit and works to commission. When I visited her for this interview, she was working on a commissioned portrait expressing yet another ability, so who knows what the future holds.

HIR

Below: an example of Gay's artwork.



A great cast of musicians shines in Songs From The East

The Bruthen Inn hosted a fantastic concert 'Songs from the East' on Saturday 17 June celebrating the original music born out of East Gippsland. A big and very appreciative crowd of all ages enjoyed the magic of seven different local acts from mid-afternoon into the night. Big thanks to Todd Cook and his trusty crew for organising this event, made possible not only by ticket sales but also by support from the East Gippsland Community Foundation with bushfire recovery funding from the East Gippsland Shire Council administered by the EGCF.

Artists and links:

- Elfian (currently working on her first album with Brent Hodgkins in Bruthen)
- Organic Joe (Philip Cappadonna and Sharon Dickeson) <https://organicjoe.bandcamp.com/>
- Raven and the Dove (Cindy Lee and David Swift) www.ravenandthedove.com
- Mike Elrington www.mikeelrington.com
- Misty Harlowe Band www.mistyharlowe.com
- Todd Cook & the Rufous Whistlers www.toddcook.com.au
- IO <https://www.facebook.com/IOband.au>

Check out Facebook or the links above if you are interested in hearing music from these artists.

Brent also has CDs from IO, Todd Cook, Organic Joe and Mike Elrington at his recording studio.

* Coincidentally, Rachael Lucas, journalist for ABC Gippsland, recently (July 2) interviewed Harry Hook for ABC News on both his personal music career and Gippsland's 'eclectic arts and original music scene'. Among the photos you'll find one of Olivia Lay and Christine Watterson outside Brent Hodgkins' Bruthen Music Recording Studio.

Check it out at <https://www.abc.net.au/news/2023-07-02/gippslands-burgeoning-music-scene/102478284>



St Matthew's Anglican Church Bruthen

Services every Sunday at 9.30am except the fifth Sunday.

Services also at St Columb's Swan Reach on the second and fourth Sundays at 11.15am, & at St Mary's Buchan on the third Sunday every second month at 2.30pm commencing in February of each year.

Volunteers always welcome at the Bruthen Op Shop.

ALL WELCOME!! Please come and you are most welcome to contact: The Rev'd Brian Norris on 0418 633446

Bruthen Inn Hotel



Kitchen is open 7 days

Lunch 12-2pm (excl. Tues) Dinner 6-8pm

Tuesdays open from 5pm

Friday night raffles supporting local sporting clubs—10 draws.

Catering for private functions and community meetings

Courtesy bus operates Wed, Fri, Sat nights only

For enquires or bookings contact Bruthen Inn Hotel.

Cheers and beers, Stretch

Phone (03) 51575201

B D C A – Annual General Meeting



The Bruthen & District Citizens Association (BDCA) will hold its **AGM on Tuesday 25th JULY 2023** commencing at **6:30pm sharp at the Bruthen Mechanics Hall Supper Room**, located 49 Main Street, Bruthen.

The BDCA exists to serve Bruthen and surrounding districts. It provides an interface between the community of Bruthen and the East Gippsland Shire Council on community issues, likewise to the local member for issues that extend to Victorian State Departments.

- Accordingly, all positions at the BDCA are up for election – so consider whether you would like to nominate for one of the following: President, Vice President x 2 positions, Secretary (Public Officer), Treasurer, CRC representative and up to three general committee positions (to assist with the running of projects / activities).

Likewise, elections will be held for the Bruthen & District Neighbourhood House (BDNH) Committee of Management (CoM).

The following roles are advertised for election:

- Chair (filled by the elected VP BDCA as the auspice association for the BDNH).
- Vice Chair, Secretary, Finance Officer, and
- general development members.

The role of the BDNH CoM is to guide the NH in its strategic direction and ensure that the NH meets the needs of Bruthen and surrounding district's needs. The Bruthen & District NH is a member of the East Gippsland Network of Neighbourhood Houses and is funded by the Department of Families, Fairness & Housing (DFFH).



Neighbourhood Houses
The Heart of Our Community

If you wish to stand for any position **on either committee** but are not sure - there is always someone to help and guide you in your new role. The BDCA and BDNH meet independently alternately once every two months on a Tuesday night with most meetings no more than an hour and a half. So the time commitment is not massive – but the benefits for the community of Bruthen – are considerable. Those elected to positions on either committee are expected to be active and not passive appointment holders.

NEIGHBOURHOOD HOUSE NEWS



Digital Essentials: Mobile Phones and Tablets



Course delivered **Online** over five 2 hour sessions

You can access this course online through the **Bruthen**, Swifts Creek, and Cann River Neighbourhood Houses and they will support you in getting connected.

19 th July	Get to know your phone, Android and iPhone.
26 th July	MyGov and Email
2 nd Aug	Security, Passwords and Scams
9 th Aug	Understanding and using Apps
16 th Aug	Using the camera on your phone and managing files

Run by the **Bairnsdale Hub, Dalmahoy St Bairnsdale**. Cost for the full course is \$30 full fee or \$15 for concession card holders.

There are limited places available so make your booking at

Paynesville Neighbourhood Centre
<https://pnc.vic.edu.au/contact/>
51559216.



Coming up on the BDNH calendar:

July

Tuesday 11th
Bruthen Remembers
 10.30am at Community Hub

Thursday 13th
Bruthen Bookies
 1pm–3pm at Community Hub

Friday 14th
Life's a Garden
 10:30 for morning tea
 Initial planning session

Mondays
Bruthen Men's Shed
 9am–1pm at Community Hub (rear)

Wednesdays
Sew What at Creative Space
 1pm–3pm

Wednesday Evenings
Young People's Project
 4.30pm–7:00pm at Creative Space
 Enrolment required

Fridays
Mums & Bubs at Community Hub
 9:30am–11am

BDNH Locations Community Hub

36 Main Street Bruthen

9am–1pm Monday (Men's Shed only)
 10am–4pm Tuesday–Thursday
 10am–1pm Friday

Creative Space

51 Main Street Bruthen (rear)

Thursday–Friday 10.30am

Ph: 03 4141 5302 (Community Hub)
 Mobile: 0497 544 490

Email: info.bdnh@aussiebb.com.au

<https://www.facebook.com/bruthenhouse>

<https://bruthendistrict.org.au/bruthen-district-neighbourhood-house/>

E	T	B	S	K	Q	N	N	I	S	D	C	W	L	B
L	C	X	L	Y	Y	A	N	E	V	O	F	X	N	I
T	A	E	M	Q	T	S	H	L	Z	R	A	F	G	M
Y	U	D	E	U	U	T	H	E	M	P	M	M	Q	A
V	G	Z	R	L	O	P	L	O	H	E	N	R	D	D
S	B	A	A	L	F	I	I	D	R	R	R	C	S	E
X	L	T	C	K	W	R	T	U	B	N	Y	I	Y	R
D	O	A	L	B	S	R	E	M	R	A	F	L	N	B
R	Y	F	I	Q	G	G	U	P	P	T	Q	O	T	O
U	S	O	Y	R	F	Y	X	X	M	Z	X	O	H	W
K	J	P	R	I	E	E	L	U	K	U	Q	W	E	I
T	A	G	U	C	W	T	F	D	Z	S	J	L	T	N
H	S	A	P	N	B	L	A	N	K	E	T	S	I	T
S	D	E	E	R	B	B	K	M	G	M	D	Z	C	E
P	R	O	D	U	C	T	I	O	N	D	B	S	L	R

FARMERS
MERINO
BRED
BREEDS

FLEECE
DORPER
PRODUCTION
JUMPER

WOOL
INSULATOR
SPUN
BLANKET

CLOTHES
MEAT
SYNTHETIC
SHORN

TAG
MATERIALS
NATURAL
WINTER

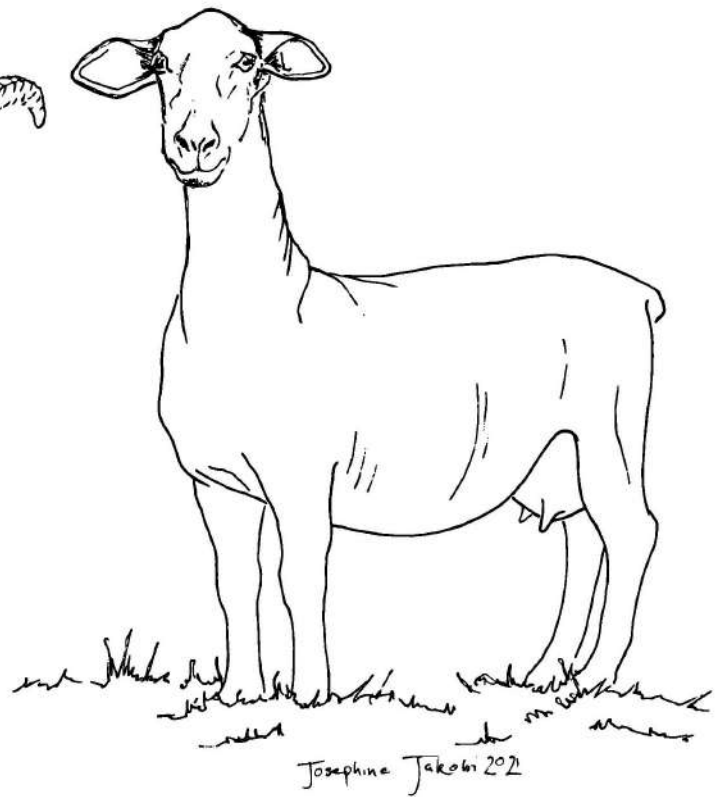
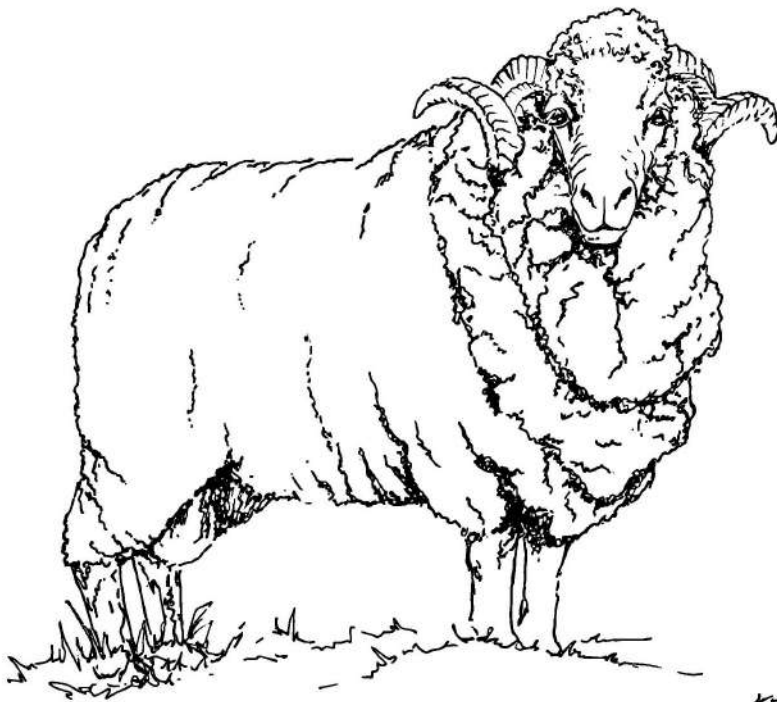
Target Words

A	A	T
S	E	L
R	M	I

How many words of at least 4 letters can you make? Each word must include the centre letter. And what is the 9-letter word? No abbreviations, no capitalised nouns, and this time just ONE plural ending in S.



SHEEP ON THE FARM



It's all about the fleece

Winter can be cold and a great way to keep warm is to wear a woolly jumper. But do you ever take the time to think about where that woolly jumper comes from?

Wool comes from varieties of sheep that are bred for their fleece, such as the Merino. The fine nature of their fleece makes it a great insulator against the cold. After the fleece from the sheep has been shorn, it then gets cleaned and spun into wool that can be made into blankets, clothing or blended with other materials to make a huge variety of items.

It's all about the meat

There are also breeds of sheep that are used solely for their meat. These sheep still have nice woolly coats, but their fleece doesn't have the quality needed for wool production. Some breeds, like the Dorper sheep, don't even need to be shorn as their wool drops off during the warmer months. In

fact, the Dorper breed is one of the largest meat sheep breeds in Australia due to their low maintenance and high meat yield.

The next time you see sheep in a paddock think about what they are being bred for... wool or meat.

Wool in your woolly jumpers

Do you have a woolly jumper that you love to wear in winter? You might be surprised that most 'woolly' jumpers don't have any wool in them at all. They are made from synthetic materials or blends of synthetic and natural materials.

Go to your wardrobe and pull out your 'woolliest' looking jumper. If it has a tag on the inside, it will say what materials make up the jumper. The more wool content, the more we are supporting Australian farmers. How many clothes do you have that contain wool?



LANDCARE PROJECT UPDATE

As many residents may be aware, the Bruthen and District Landcare Group has been actively revegetating a wetland site where Deep Creek crosses the Great Alpine Road. If you peek through the roadside vegetation, you can see the plant guards dotted across the site – evidence of a lot of hard work undertaken by volunteers over the past few months. After the story published in last month’s Tambo Rambler, some readers have posed the question: how will our plants fare in a flood? Good question, and the simple answer is we can’t be sure, but we’ve taken steps to give them the best possible chance of surviving.

As Norm mentioned in the previous story, the plants we have selected were based on DEECA’s pre-1750 modelling for the site. What this refers to is Ecological Vegetation Class (EVC) modelling. DEECA—albeit a few iterations ago—has used field survey data and other landscape features such as topology, aspect, etc., to model what the vegetation across Victoria was like before Europeans arrived and much of it was cleared or altered. For each EVC a “benchmark” is available that gives a picture of what a long-undisturbed patch of this vegetation type might look like, how many large trees per hectare, which species were they likely to be, what was growing in the understorey, how dense was the shrub layer? This information provides a convenient starting point for Landcare groups and others interested in revegetation because it can tell us what may have grown on our site previously, and hence what may successfully grow there again.

Our wetland planting site is modelled as the EVC Lowland Herb-rich Forest. According to the benchmark, this vegetation type primarily occurs in gullies and along lower slopes close to minor drainage lines. It should be an open eucalypt forest with a range of medium shrubs and a ground layer dominated by grasses, graminoids, and—not surprisingly—herbs. (In botany this doesn’t mean cooking herbs by the way, just small non-woody plants.) When it comes to revegetation, it should however be noted that benchmarks don’t provide an exhaustive list of species, and revegetating a site from scratch is not the same as natural vegetation growth, so some local knowledge and flexibility when selecting plants can be useful.

So how does all this help our newly planted plants? Well, the plant species that we have selected are largely based on the benchmark, with a few additions based on local knowledge. As Norm mentioned in the previous article, different plants have been selected for different areas depending on whether they prefer riparian, woodland, or damp/rainforest areas. In areas that are likely to be inundated more frequently we’ve only planted



Several varieties of plants were planted at the wetlands site.

species that can tolerate or even require wetter conditions. Whether they would survive an extended flood we’ll have to wait and see. Hopefully they get a chance to mature and set seed before that happens so once the water subsides a new generation of native species can colonise the area rather than a new crop of blackberries!

As for the woodland and damp forest plants, they have been planted in areas that are more elevated, and unless there is a large flooding event their roots shouldn’t get too waterlogged. It is heartening to see the amount of natural wattle regrowth on these elevated areas now that the blackberry and other weeds have been removed, so I am quietly confident that once our plants establish and start creating a native seedbank in the soil, they would recover after a flood. Critically though, there are a lot of weeds further up Deep Creek and elsewhere that could re-invade the wetland site following a flood. This is one of the challenges of managing wetlands and waterways: everything upstream comes downstream, and during a flood, everything goes everywhere! The local Landcare group will most likely need to continue managing this site in years to come, which segues nicely into.

We’re always happy to have more members and volunteers, so please keep an eye out in the Rambler and on Facebook for upcoming planting days in late winter and/or early spring.

Aileen Collyer

Bruthen - Bairnsdale Bus Timetable Dysons Bus Lines Ph: 5152 1711

Bruthen to Bairnsdale Morning	Monday & Friday AM	Tues, Wed, Thurs AM
Bruthen (opp) General Store	08:10 am	09:50 am
Bairnsdale, Corner Main & Bailey St	08:30 am	10:20 am
Bairnsdale Train Station	08:35 am	10:30 am
Bairnsdale to Bruthen Afternoon	Mon to Thurs PM	Friday PM
Bairnsdale Train Station	1:25 pm	3:40 pm
Corner Chemist (Service & Main Street)	1:30 pm	3:45 pm
Bruthen, Station & Great Alpine Rd	2:00 pm	4:15 pm

Mobile Library



The mobile bus service provides an opportunity to not only use the library service, but to engage with them on Council matters. All community members welcome. See the schedule below for when one of our busses is visiting your community.

What you can do at the mobile service

- Borrow books
- Pick up a Council newsletter
- Lodge a report or request
- Pay an account / make electronic payments
- Make enquiries, collect and lodge application forms
- Register your dogs and cats
- Access and complete surveys
- Learn about and provide feedback on projects
- Use a computer
- Have a chat and much more

Wed	Tambo Upper** (near school)	9.00 am – 9.45 am
	Bruthen (Main Street)	10.00 am – 11.15 am
	Nowa Nowa (Mingling Waters C/park)	1.30 pm – 2.00 pm
Thu	Bruthen** (near kinder)	10.45 am – 11.15 am

*Sites marked** are not visited during school holidays*

Phone 51524225 or 1300 555 886
www.eastgippsland.vic.gov.au



OPEN: Mondays & Wednesdays from 8.00am to 12 midday

GP Clinic: Wednesday by appointment only. Call 5155 8300 and select option '1'. Please make sure you let our Customer Service team know you would like your appointment in Bruthen.

Community Health Nurse: Monday and Wednesday, \$12 per consult or \$6 concession. Note: services will not be denied if you are unable to pay. Call 5155 8300 and select option '1'.

Maternal & Child Health: Once a month on a Tuesday by appointment only. Call 5155 8300 and select option '4'.

Room & Bus Hire: all bookings are to be directed to our Customer Service team on 5155 8300.

Pathology collection: Monday and Wednesday from 8.00 to 11.00am. Nurse fees apply.

These services are for Bruthen and district residents. For more information about GLCH, our services and programs, please visit glch.org.au or find us on social media.



NEW MEETING DATES!!



Bruthen & District
Landcare
Group

Group meetings
1st Saturday of the month
@ 9 am

Venues to be confirmed
closer to the date

New members welcome

For details contact
landcare.bruthen@gmail.com

EVENTS & NOTICES

Injured Wildlife Rescue

When you find injured wildlife please keep these details in case of emergency:

WILDLIFE SHELTERS

Jade Whittingham

Wombat Wisdom, (Bairnsdale), 0473 446 161

Holly Corbett

Holly's Wildlife Rescue (No bats) (530 Bairnsdale Dargo Rd Hillside 3875), 0432 539 408

Suzie

Waterholes Wildlife Shelter Clifton Creek Koala specialist, 0447 470 905.

Geoff Nicol

Treehouse Wildlife Refuge Metung, 0419 345 820

Birds, wombats, kangaroos, etc

Tai Chi

For all those people wanting to warm up this winter, Tai Chi is a series of gentle movements to encourage flexibility and mindfulness. Yes, the space is heated, and classes are on Mondays from 10.30 to 11.30am in the Bruthen Mechanics Hall. Increased patronage is needed for the class to continue, so please think about trying it out. Any enquiries please call 0439 812 166.

Landfill and transfer station closure on 18 July 2023

Due to Annual Staff Development Training, all landfills and transfer stations in East Gippsland will be closed on July 18, 2023.



Training plays a crucial role in fostering the growth and success of Waste Operations in East Gippsland Shire. This dedicated time allows employees to enhance their skills, knowledge and professional abilities, ensuring they stay up to date with industry and occupational health and safety requirements.

We apologise for any inconvenience.

BRUTHEN LICENSED POST OFFICE

(Est.1893)

East Link Toll Passes



Photocopying And Facsimile Service

CBA, NAB, WestPac Banking, Western Union Money Transfer, Bill Payments, Post Bill Pay, Stationery, Greeting Cards, Wrapping Paper, PostPak & Australia Post Postal Services

Howard & Jenny Young, Phone/Fax (03) 5157 5209



BRUTHEN MEN'S SHED

Mondays 9am-1pm

All Welcome

Rear Community Hub
36 Main Street Bruthen



In event of an emergency

Bruthen has 3 Heart Start Defibrillators

Located at

Bruthen General Store

6.30am – 6.15/7.15pm (7 days)

Bruthen Rec Reserve

for sports events / Caravan Park

Bruthen Police Station

Note: under 24/7 video surveillance



Darren Chester

Putting Locals First

#lovegippsland

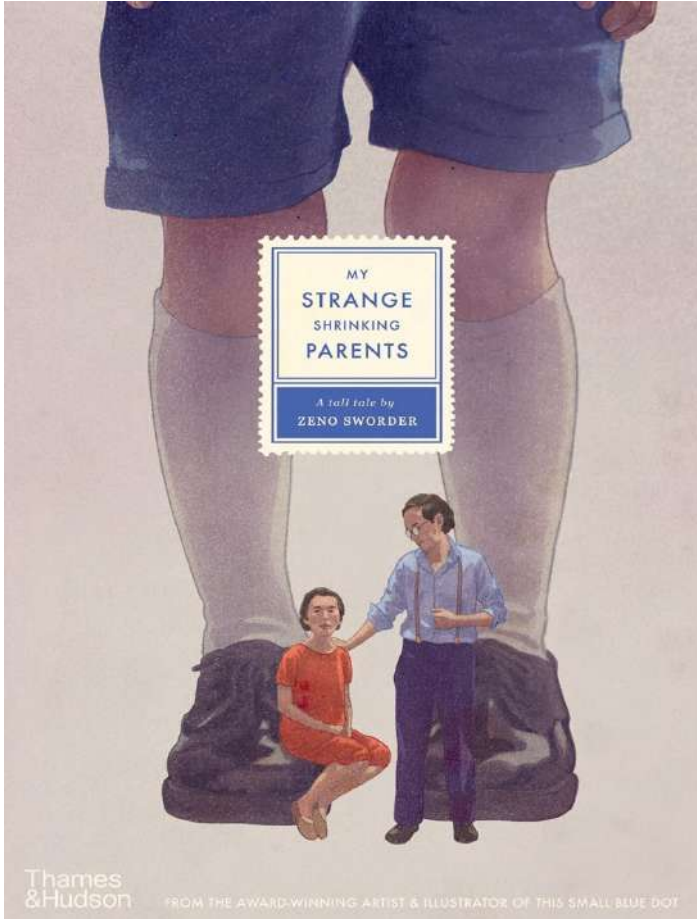


INATIONALS for Gippsland

www.darrenchester.com.au

TRADES AND SERVICES

Book Review 'My Strange Shrinking Parents' - A Tall Tale by Zeno Swords



Introducing My Strange Shrinking Parents, which has made the Picture Book of the Year Shortlist by The Children's Book Council of Australia this year, the author dedicates it to his immigrant parents. The book emerges beautifully from his experiences growing up in Australia with underlying distinct, mixed cultural backgrounds. Essentially, growing up different.

The text rests in the reality children of immigrants experience daily – their parents' hardships born from sacrifice of the familiar, extended family, culture and language in order to build access to opportunities for their offspring, opportunities beyond reach in their own countries.

The author states: 'I saw my own parents' sacrifices and I learned something about the strange nature of love; when given it enlarges both the giver and the receiver. In this way, our parents were giants.'

So much can be talked about with young people stimulated by the book's coloured, ethereal illustrations and words which grace every page!

Chris Fella
 Qualified Carpenter
 Renovations, Decks Pergolas, New Houses, Fencing
 20 Year Experience
 TFN 195 357 871
 MB. 0412 9912 60 PH. 5157 5198
 E. chrisfella@bigpond.com

ACG
 KITCHENS & CABINETS
 Adam & Carly Greenwood
 Email – info@acgkitchens.com.au
 Phone – 0402 137 148
 Tambo Upper

RIVIERA GAS SERVICES
Peter Weeks
 Specialising in Gas Installations
 Conversion and Maintenance
 General Plumbing
 Lic No 21065 **Mobile: 0418 516 745**

Bruthen Garden Supplies
NOW OFFERING WATER CARTAGE
 • 13,000L WATER CARTAGE.
 • DOMESTIC & GENERAL 7 DAYS
 Tip-trucks 6m³ & 10m³, Bobcat, Excavator, Post Hole Boring, Trenching, Slashing.
SUPPLIERS OF SAND, SOIL & MULCH
WE NOW SELL CHOOK PELLETS
ALL AREAS
76 Main St, Bruthen
M: 0429 944 297

TAMBO RAMBLER

Not your average Bandicoot

So you're having a few drinks down the pub and one of your mates asks how is your bandicoot problem going.

Well, you say that you are still getting up several times each night and the wife is losing patience before you realize that he is not enquiring about your prostate.

There are several cryptic and mysterious nocturnal human and wildlife conditions that are rarely discussed on Facebook or in public.

One part of the mystery is that there is a boom in the population of a rarely seen native marsupial that is still called by its indigenous name 'bandicoot'.

It is a very widely distributed protected native animal that is entirely nocturnal and thus rarely seen.

Over the last couple of years environmental conditions have led to an unprecedented increase in local numbers especially around coastal areas in Eastern Australia.

Do you see little shallow diggings in your lawn or in soft soil around bushland areas?

These are likely to be the result of bandicoots digging up grubs and insects that live in the upper soil level.

They are not the most cuddly looking animals and some species have disproportionately long noses that are superbly adapted to locating their food.

Bandicoots are significant earth movers that facilitate propagation of native plants and aerate the topsoil.

They are strong and fierce fighters but are no match for feral animals and pet cats and dogs especially in breeding seasons where breeding territory is of paramount value.

Take care and give this precious and rarely seen native animal the opportunity to feed and breed in your neighborhood.

Bandicoots are never a problem, rather a cause for celebration.

As for your prostate, well, that is another problem. We are all richer for the diversity of our unique wildlife.

Pictured Right: The Southern Brown Bandicoot.



Tambo Rambler Advertising Costs

BLACK AND WHITE Advert Options

- ⇒ 9 x 5 cm - **Cost \$10.00**
- ⇒ 9 x 8 cm - **Cost \$15.00**
- ⇒ 1/4 page - **Cost \$25.00**
- ⇒ 1/2 page - **Cost \$50.00**
- ⇒ Full page - **Cost \$100.00**

25% discount for BDCA Members,
(only applies to black and white adverts)

COLOUR Advert Option 1: Full Page

- ⇒ One full page, full colour feature / advert placed on the inside cover of the Tambo Rambler
- ⇒ Plus acknowledgement as the major sponsor for that month's edition of the Tambo Rambler
- ⇒ **Cost - \$165 per edition**

COLOUR Advert Option 2: Half Page

- ⇒ One half page, full colour feature / advert placed on the inside cover of the Tambo Rambler
- ⇒ Plus acknowledgement as the sponsor for that month's edition of the Tambo Rambler
- ⇒ **Cost - \$100 per edition**

COLOUR Advert Option 3: Quarter Page Full Colour Promotional Package

- ⇒ One quarter page, full colour feature / advert placed on the inside cover of the Tambo Rambler
- ⇒ Plus acknowledgement as the co-sponsor for that month's edition of the Tambo Rambler
- ⇒ **Cost - \$65 per edition**

Closing date for August issue is July 25.

Please send your articles by e-mail only to:
tamboramblerr@gmail.com

(Word, Publisher, JPG or PNG format with photos please
PDF format will also be accepted.)

Tambo Rambler is distributed across East Gippsland via email and on the web page at
<https://bruthendistrict.org.au/tambo-rambler/>

We also distribute to Government representatives, Bairnsdale Library, Victorian State Library, and local Historical Societies
Hard copies are available in Bruthen at the P.O, General Store, Oppe Shoppe, Bakery, Blue Bee, Hotel and Neighbourhood House for a gold coin donation.

The Tambo Rambler Committee and BDCA do not take responsibility for opinions expressed by contributors to the Tambo Rambler. The Editors reserve the right to reject articles and advertisements and to edit submissions if necessary

All submissions must carry the author's full name, address and phone number. They may be published anonymously if preferred.



