

TAMBO RAMBLER

Bruthen and District Newspaper
Produced by Bruthen and District Citizens Association

December 2022

NUMBER 281

Bouncebackability Fair: Bruthen on high after great day out



The Tambo Rambler is proudly sponsored this month by Elders Real Estate Lakes Entrance & Metung

The Tambo Rambler would like to acknowledge the Gunai Kurnai People, the Traditional Owners of the land on which we gather, and pay our respects to their Elders both past, present and emerging.



Zombies caught on film

Local band IO have released their latest video clip "Terrified of Zombies" on Youtube. The video clip was filmed at Bruthen's recent Zombie Festival and features several locals in the clip. You can check it out on the QR code below or at youtube.com/watch?v=sD3QKyEDA5w



Contact our team today for a 'free market appraisal'

For all your real estate needs. Enquire today with a team you can trust to deliver genuine service and great results.

Call our award winning team today on

03 5155 3133

lakesentrance.eldersrealstate.com.au

Experience

Elders

Real Estate

Bouncebackability Fair bringing Bruthen back together again

At the end of a season of unpredictable spring weather, Bruthen was fortunate to have (mostly) fine weather for the Bouncebackability Fair on Saturday November 19. This was the third year the event has been held, which is intended as an occasion for the community to enjoy markets and a barbeque, and to connect with various agencies who support us in a wide variety of ways in both a day-to-day sense and in times of crisis.

There was a diverse range of stallholders in the Main Street gardens, with goods including homemade produce, fabric crafts, clothing, woodcraft, specialty donuts, jewellery and more. In addition, the CFA, DELWP and the East Gippsland Shire provided information on their respective activities and programs, as well as the Local Incident Management Plan (LIMP). Bruthen Landcare set up a display, as did Bruthen Arts and Events, and the Bairnsdale branch of GippSport provided great games for the kids - trampoline handball, badminton, and a dexterity testing beanbag toss target.

BDNH provided a free barbeque (though many people happily made much appreciated donations) and the Bruthen Lions Club made great coffee.

Although there wasn't a huge crowd attending, organisers had very positive feedback from stallholders, volunteers and the public. Regular markets are planned throughout the coming year – see dates listed right, though early dates are somewhat tentative as they will be subject to the

2023 Market Dates for your diary:
Bruthen Music Weekend:
 Sat 12 Feb 2023, 10am – 2pm*
Family Fun Day Market:
 Sat 18 Mar 2023, 12pm - 3:30pm
Hotties Fair & Market:
 Sat 20 May 2023, 12pm - 3.30pm
Orange Fair & Market:
 Sat 16 Sep 2023, 12pm - 3.30pm
Bouncebackability Fair & Market: Sat 18 Nov 2023,
 10am - 2pm
 Remember to book your stall
 in advance by emailing:
bruthenhouse@gmail.com
 or call Kylie 0488776800

ongoing Streetscape works. Thanks go to all the agencies and stallholders who took part and made the event what it is; the East Gippsland Shire for their support; to the Mechanics Hall Committee; the Bruthen Lions for, aside from providing their great coffee, helping us run and pack up the barbeque; and our wonderful Neighbourhood House volunteers who organised the market side of the event, and helped set-up, pack-up, and staff the stall and barbeque.



Annie bids farewell to Bruthen

It was with sadness that the Committee of Management, Staff, Volunteers and various activity groups bid farewell to Annie Pearce, Manager of the Bruthen & District Neighbourhood House. Annie has held the role since late 2019, throwing her heart and soul into the position.

The Neighbourhood House which began operations in late October 2018, initially concentrated on getting the background policies and procedures ready for its opening in 2019. Annie joined the team that year and the community was almost immediately affected by the catastrophic 2019/20 bush fires which devastated most of the east coast of Australia. It was here that Annie, the Neighbourhood House and Volunteers came to the fore. The Neighbourhood House decided to open up as a respite and refuge centre, providing many residents and visitors with computer and internet access, referrals to key local and state government services and more often than not just a place to meet and have a chat. So just from a bushfire recovery perspective - a massive community thankyou to Annie.

Since opening, the Neighbourhood House has continued to grow, with Annie navigating the rules of the pandemic in an attempt to keep the house open as much as possible and remain connected to the community. The fact that we have a variety of community participant groups is testament to the work and dedication that Annie placed into her role - making sure that Community needs were at the forefront of what the House was able to offer.

Annie and her family have relocated to the South Gippsland area where Matt and Annie are working locally and the girls enrolled in schools.

The Neighbourhood House community would like to extend a sincere thankyou to Annie for the time, effort and dedication that she has put into the house (and the many programs that were able to be funded due to her excellent grant writing skills). Annie's efforts have resulted in a firm foundation for future Neighbourhood House activities. Due to the proximity of the holiday season, advertising for a new manager for the Neighbourhood House will occur in the new year.





Thanks Annie and all the best.



Bruthen Op Shop

Bruthen Op Shop is all set for Christmas so if you are still looking for gifts or Christmas outfits, pop in and have a look, it's great to recycle!
We are desperately in need of new volunteers so please come and talk to us.
Thanks for all your support during 2022.



Phoenix Art Studio & Gallery
0438 035 777 61 Main Street Bruthen
Open Wednesday–Sunday
10.30am –3.30pm



FREE Professional Development for Creatives

Provided by your local Council

Support for your pathways & projects

MORE INFO

SUBSCRIBE

popupart.com.au/artsaction

Blue Bee CAFÉ TAKE AWAY

Monday - Thursday 6.00am - 3.00pm

Friday 6.00am - 7.00pm

Saturday 8.00am - 2.00pm

Sunday Closed

Phone Orders (03) 51575397 60 Main Street Bruthen



DINE IN

EGCF grants funding to BDNH



The Bruthen and District Neighbourhood House was recently successful in the East Gippsland Community Foundation (EGCF) round of grants. One of the EGCF aims is to create 'a lasting difference in East Gippsland by investing in projects which promote well-being, resilience and involvement in our community'. Their website can be found at: <https://givetoeastgippsland.org.au/>

The first grant received will enable the Neighbourhood House to replace the existing broken fridge and ailing kitchen oven which are key not only for day to day operations of the House, but also in ensuring the successful Community Kitchen Program continues to operate. This grant will also enable new dining tables to be procured.

The second grant that was awarded by EGCF to the Neighbourhood House was \$20,000.00 for the Bruthen Young Peoples Project for 2023. This will see funds available to continue the Bruthen Youth Group (which meets Wednesday nights, generally 4:30-7:30pm). This group offers community directed

activities and projects decided by our young people. School term activities have included cooking, jam sessions, art, games, movie nights, animation, excursions, bike riding and much, much more. For 2023 the Neighbourhood House will work closely with this group on an exciting suite of new activities, and work with local schools to see who would like to join in the activities. The grant application was written by Annie Pearce (outgoing Manager of the Neighbourhood House), and is testament to the strong community focussed activities that the House has sought to undertake.

Tim BULL MP

MEMBER FOR GIPPSLAND EAST



Servicing Bruthen and district community.

143 Main Street, Balmssdale VIC 3875
 03 5152 3491
 tim.bull@parliament.vic.gov.au
 Funded from Parliamentary Budget





MCO plays Bruthen

Bruthen was very fortunate to have a second visit this year by members of the Melbourne Chamber Orchestra, who gave a stunning performance of Beethoven's Last Quartet (*String Quartet in F Op 135*) at the Mechanics Hall on December 3. This piece was the last major work by the great composer, and was written in 1826 when he was profoundly deaf.

The work was performed by four highly talented and expressive musicians: Natalia Harvey (Violin 1), Emily Beauchamp (Violin 2), Merewyn Bramble (Viola) and Anna Pokorny (Cello). It was a real delight to experience the performance at the Hall, which, as MCO Executive Director Richard Jackson pointed out to the audience, was akin in dimensions to those places where the music was originally performed (if a little less grand).

The Beethoven Quartet was preceded by two other works: Hugo Wolf's *Italian Serenade*, composed in 1887, and Sally Beamish' *String Quartet No 2 Op California*, composed in 1999. The audience was clearly very appreciative of the diversity of the works and the wonderful playing of the performers. And they will be back sometime next year!



Bruthen Market

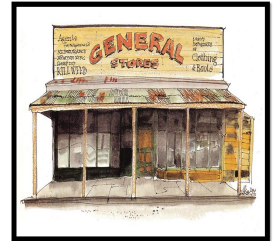
We are excited to say a bi-monthly market is being organised! With the goal of bringing the community together, selling fresh produce, crafts and handmade items. Market to be held on second Sunday of each alternating month, from 10am till 2pm. Interested in having a stall? Email creations@thehotend.org or call Jemima on 0404 795 630.

BRUTHEN OP SHOP has RAGS available great for any cleaning \$5 a big black bag all cotton! Can cut to size

54 Main Street,
Bruthen.

Open 7 days

Ph: 03-51575 415



- ✓ Your local ELGAS Distributor
- ✓ Supplier of local produce supporting local growers
- ✓ Provider of Butcher Supplied Quality Meats
- ✓ Supplier of gas heating, stoves, hot water systems
(provide a written quote & we will attempt to beat it)

Shop local – support local employment
email: BruthenGeneralStore@gmail.com

Teresa Young
LICENSED REAL ESTATE AGENT

0429 398 730

teresa.young@atrealty.com.au

<http://www.atrealty.com.au/>



Bruthen Streetscape works finally begin



History

For those who are not aware, this project is a Shire Council initiative in consultation with the community, with both individuals and with the BDCA as community liaison.

Although many “starts” have been attempted over decades to do something about the ambience of our wonderful town, this final one gained the financial support of \$1.5 million.

This project commenced at a community planning meeting in December 2020.

A Project Control Group (PCG) was formed in early 2021. Both Nico (James Nicholas) and Marj Jones, as BDCA representatives, have attended PCG meetings since its inception to give a community perspective. Many community consultations with the Shire have had valuable input to the process.

Over the last few years, the development of the plan, first the traffic flow, followed by the landscape component has, with community input, slowly negotiated all ideas and government protocol and is now ready to move into the actual development phase.

Final Steps

Traffic Component

After much negotiation, mainly from the community side, construction works on the traffic component will be started in early February 2023!! (after the Christmas/New Year / school holiday rush is over).

Landscape Component:

All community members (and visitors) will have seen evidence of commencement of the landscape

component. The roses have been removed from the gardens. This was professionally carried out, with the plants relocated and looked after at a nursery until they are planted back in their new beds to become part of the landscape design. The rotunda has been relocated and the ground at the original site levelled. This will be followed by the construction of the new toilet block in its new location, the building of new pathways, garden designs and plantings.

For more information on the whole project, please refer to the Shire’s YOUR SAY page for project updates:

<https://yoursay.eastgippsland.vic.gov.au/bruthen-streetscape>

or contact either Nico or Marj.

Bruthen Lions Park

Accolades to the Bruthen Lions Club on the continual improvement to the park at the entrance to the town.

Construction of the new toilet has been completed. This has been a great boon, not only from a visitor point of view, but for local young families who use the park for kids to play and parents to chat.

The next stage will be to construct a screen and landscape around the building.

A dump point connection was included when the sewer was altered. The next step will be the installation of the actual top apparatus for caravanners to utilise.

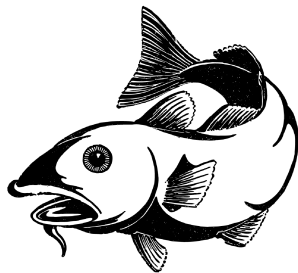


BRUTHEN BOWLING CLUB NEWS

In the last month, Barefoot Bowls nights (every **THURSDAY** from late afternoon onwards) have increased in popularity, maybe encouraged by the wonderful and varied meals provided by volunteers! A few have joined up as full members too. Our last night will be December 15, before a short break for the festive season, returning in early January. School holidays are an ideal time to bring the kids down too, fun for the whole family. See the club's Facebook page for details. As Christmas approaches, some local companies are making use of the clubhouse for their break-ups. The facilities are available for hire all year round, and are ideal for celebrations of any kind for smaller groups where a larger venue may be less personal. For these and all other queries, please contact the President on 0418 330311, or the Secretary on 0409 608782. Meanwhile, we wish everyone a happy and safe CHRISTMAS-TIDE, and a wonderful NEW YEAR.

Bruthen Angling Club

The weather caused the cancellation of the November comp, and the festive season means we're all too busy over December and January, so our next attempt will be an off-shore charter in February. Further details will be in February issue.



Season's Greeting to All,
Pete

St Matthew's Anglican Church Bruthen

Services every Sunday at 9.30am except the fifth Sunday.

A healing service is held on the third Saturday at 5pm.

Services also at St Columb's Swan Reach on the second and fourth Sundays at 11.15am, & at St Mary's Buchan on the third Sunday at 2.30pm.

ALL WELCOME!! Please come and you are most welcome to contact:

The Rev'd Brian Norris on 0418 633446

Bruthen Inn Hotel



Kitchen is open 7 days

Lunch 12-2pm (excl. Tues) Dinner 6-8pm

Tuesdays open from 5pm

Friday night raffles supporting local sporting clubs—10 draws.

Catering for private functions and community meetings

Courtesy bus operates Wed, Fri, Sat nights only

For enquires or bookings contact Bruthen Inn Hotel.
Cheers and beers, Stretch

Phone (03) 51575201

bullant
BREWERY
BRUTHEN



OPEN
Wednesday to
Sunday
10am to 5pm

Phone: (03) 5157 5307

The Bite @ Bullant Brewery food philosophy is simple:

- ★ Use local seasonal produce
- ★ Use sustainably harvested seafoods & responsibly stewarded meats
- ★ Introduce local flavours and ideas to produce tasty food

Our menus present a contemporary and seasonal approach to food that can be enjoyed with beer

- ★ Lunch Special \$20
- ★ Wednesday - Pasta.
- ★ Thursday - Schnitzel.
- ★ Friday - Fish & Chips.

If you haven't already tried Craft beer why not pop in and have a taste of one of ten beers on tap

Coming up on the BDNH calendar:

December

Thursday 8th
Bruthen Bookies
1pm–3pm Community Hub

Tuesday 13th
Bruthen Remembers
10.30am Community Hub

Thursday 15th
Writing & Colour Workshop
11am Writing; 1pm Colour
Creative Space

Wednesday Evenings
Young People's Project
4.30pm–6:30pm Creative Space
Enrolment required

Neighbourhood House
Closed
from Thursday 15 December
Reopen
Tuesday 17 January 2023

Community Hub
36 Main Street Bruthen
9am–1pm Monday (Men's Shed only)
10am–4pm Tuesday–Thursday
10am–1pm Friday

Creative Space
51 Main Street Bruthen (rear)
Thursday–Friday 10.30am
Ph: 03 4141 5302 (Community Hub)
Mobile: 0497 544 490
Email: info.bdnh@aussiebb.com.au
<https://www.facebook.com/bruthenhouse>
<https://bruthendistrict.org.au/bruthen-district-neighbourhood-house/>



Carols
by
Candlelight

18TH DECEMBER 6PM
THE VILLAGE GREEN, BRUTHEN
*Presented by St. Matthews Anglican Church
& Bruthen Lions Club*

CHURCH RAFFLE

\$2 per ticket, three prizes.

- 1: Hamper
- 2: Quilt
- 3: A Basket of Goodies.

Raffle will be drawn on the night.

Recent Basket Weaving Workshop

Last Saturday (3rd Nov) the Neighbourhood House hosted a great basket weaving workshop, in which participants learned a basic weave of a traditional indigenous method.

Further workshops are planned for next year (dates TBD): an intermediate session will teach a more advanced weave; and an advanced session will make use of local native plants—Flax and/or Lamandra.

Please get in touch if you would like to be put on a contact list.

Email: info.bdnh@aussiebb.com.au

Phone: 0497 544 490



Bruthen's Angus McMillan cairn – What do you think?

The Angus McMillan cairn in Bruthen is one of many that were erected to mark the path that McMillan took as he travelled through Gippsland.

How many people in the community are familiar with the cairn, its location and what it says?

With discussions about the Street Scape project in relation to the Art and Information Centre, the future of the cairn was raised. Should it stay or should it go?

A little about Angus McMillan

1. Angus McMillan's exploration of Gippsland looking for good grazing land contributed to the expansion of colonial settlement.
2. The plaque on the cairn only notes that he passed through Bruthen. He did not settle here. There is also one in Mossiface.
3. Since the cairn was erected in 1927 a lot more information has emerged showing McMillan to be a cruel man who was implicated in at least one massacre of the Gunaikurnai people. When his colleague Macalister was killed by an Aboriginal man, he retaliated by organising an armed assault on the Gunaikurnai people, leading to the massacre of between 60 and 150 Aboriginal people at Warrigal Creek. McMillan was also the leader of the "Highland Brigade", a group of Gaelic-speaking men who undertook reprisal raids on the Gunaikurnai people .

The question is:- **Do we want to keep the Angus McMillan cairn or not?** The BDCA is interested to know what the Bruthen community would like to do with it.

The BDCA agreed that his story is part of our history, like it or not, and should be noted, but his treatment and massacres of Indigenous people should also be told.

Some Ideas:-

1. Remove the cairn completely and replace it with some contemporary art work in consultation with community networks.
2. Remove the cairn as above but keep the plaque and mount it elsewhere.
3. Remove the cairn, erect a sign telling the wider story and put the McMillan plaque nearby.
4. Leave the cairn where it is and also erect an information sign.
5. Leave everything as it is.

You might have other ideas which we would appreciate hearing.

Have your say by emailing question2bdca@gmail.com or drop a line to the BDCA at PO Box 24, Bruthen, 3885. All suggestions will be considered at our March meeting.



Spotted in town on during November were members of Chrysler Valiant R & S Series car clubs from all over Australia. They were taking part in the Ninth National R & S Reunion celebrating 60 Years Downunder of these iconic cars.

B	B	M	E	T	D	R	C	L	T	L	M	H	Q	Y
D	U	Z	S	B	L	B	A	A	F	A	R	S	R	L
T	E	R	Q	T	J	N	T	R	G	W	O	U	K	L
W	F	N	R	C	S	C	C	E	D	L	O	R	V	E
Z	A	O	E	O	L	H	M	F	S	T	I	V	H	B
Z	F	X	R	T	W	E	L	U	S	I	V	E	M	T
R	M	D	A	E	A	I	W	O	L	L	E	Y	V	B
S	E	N	I	P	S	E	N	Z	A	B	S	X	O	R
M	D	T	G	Q	B	T	R	G	R	E	C	L	N	O
V	F	R	A	B	Q	L	F	H	I	B	D	K	W	W
A	E	O	E	Y	S	Z	N	C	T	C	Z	B	B	N
Y	H	D	X	U	N	D	E	R	G	R	O	U	N	D
A	Q	M	T	Z	I	P	T	Z	S	L	D	F	L	J
L	P	T	V	A	S	Q	F	R	Q	J	S	K	D	H
C	A	M	O	U	F	L	A	G	E	Y	L	P	B	A

- BELLY GREY BROWN SPECIES BURROWING SPINES
 CAMOUFLAGE SURVEY CAT THREATENED ELUSIVE THROAT
 FERAL UNDERGROUND FOREST WEBBED FOX YELLOW

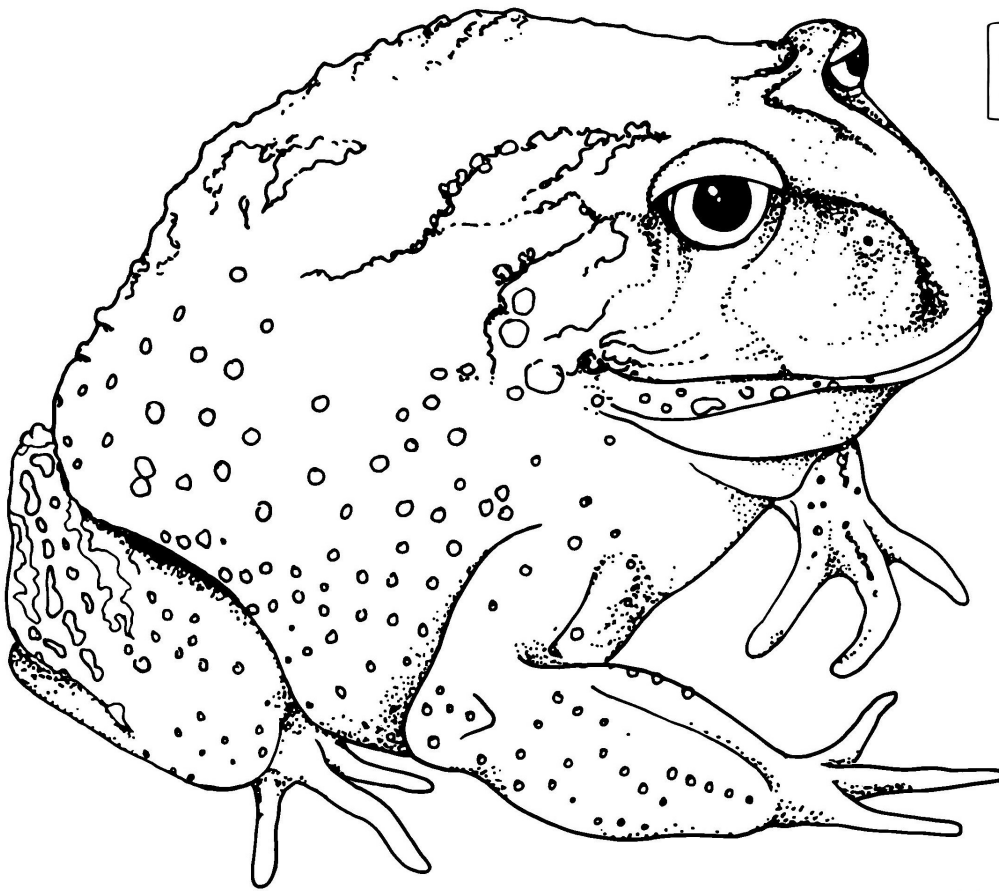
Target Words

N	V	O
A	E	I
T	L	E

How many words of at least Four letters can you make? Each word must include the centre letter. And there are at least two 9-letter words! No abbreviations, no capitalised nouns.



GIANT BURROWING FROG



Josephine Jakobi 2021

The giant burrowing frog is an elusive, large frog that grows up to 10cm. Its dark brown to grey body, with spotted yellow sides, makes them well camouflaged.

However, when turned over they have a distinctive white or bluish-white belly with a grey to pale pink throat.

These frogs aren't climbers like tree frogs, so they don't have discs on their toes. These frogs have unwebbed fingers and slightly webbed toes on their hind feet. This helps them walk over moss and leaf litter, as well as being used for burrowing. Males have large black spines on their fingers.

Threats to the giant burrowing frog are numerous including feral cat and foxes, land clearing, fuel reduction burning, grazing, timber harvesting and chytrid fungus; however, all require further investigation.

The giant burrowing frog is listed as Vulnerable in Victoria.

Records show that the giant burrowing frog occurs from Newcastle in NSW to Wahalla in Victoria. However, with no known records between Jervis Bay and Eden in NSW it is

proposed that there are in fact two different species.

Further research is underway to determine this theory. Due to their elusive nature and camouflage, very little is known about the giant burrowing frog. They spend most of their time underground, rarely emerging to call and breed at water bodies.

All Victoria records have been from within eucalypt forests below 1000m elevation, with no records from farm land around dams or other water bodies.

In 2015, nine males were recorded in the Mitchell River catchment. In 2018, audio of males calling was recorded in forests between Orbost and Cann River. They have been recorded in areas immediately post fire, which is really encouraging.

More surveys and reported sightings are required to gather population data about this frog.

PUBLIC NOTICES

Detox your Home is coming to Bairnsdale!

Saturday 10 December 2022
9.00am to 12.00pm
 East Gippsland Livestock Exchange
 11 Saleyard Road, Bairnsdale

Safely dispose of unwanted household chemicals at a free Detox your Home event, without harming your health or the environment.

Household chemicals such as bleach, pesticides, weed killers, cleaning products, cosmetics, and cooking oil should never be put in your rubbish bins or poured down the drain.

Detox your Home events are drive-through and contactless.

Why dispose of household chemicals?

Household chemicals can be dangerous. They may harm your family and pets, add extra fuel to a house fire, release toxic fumes and pollute the environment.

Disposing of these items responsibly will:

- reduce the risk of poisoning, keeping your family, friends and pets safe
- keep toxic chemicals out of waterways, and
- minimise environmental pollution and fire hazards.

What happens to the chemicals?

Qualified chemists sort the chemicals, placing them in sealed drums to be transported to a specialist waste treatment plant. The majority of chemicals collected at Detox your Home events are recycled or used for suitable purposes, such as producing energy. Any chemicals that cannot be repurposed are safely disposed of after being treated.



Detox your Home accepts:

- Acids and alkalis
- Aerosol cans
- Ammonia based cleaners
- Anti-freeze, coolant
- Brake fluid
- Car body filler
- Car care products and waxes
- Cooking oil
- Cosmetics, nail polish and remover
- Detergents, bleach, disinfectants and drain cleaner
- Fertilisers
- Fire extinguishers
- Floor-care products and waxes
- Fuels: petrol, diesel, kerosene, other
- Glues: water-based and solvents

- Hand sanitiser
- Herbicides and weed killers
- Insect spray and pesticides incl. rat poison
- Oven cleaner
- Pool chemicals
- Solvents
- Thinners, turps and paint stripper
- Transmission fluid
- Wood preservatives and finishes
- And other items found at home with these symbols:



For a full list of chemicals accepted, visit: www.sustainability.vic.gov.au/accepteditems

For safety reasons we can't accept containers of more than 20 litres or 20 kilograms. Please bring chemicals in their original packaging or in disposable containers that will not be returned to you.

Detox your Home does not accept:

- Ammunition or firearms
- Asbestos
- Batteries: car and household varieties
- Chemicals used by businesses
- Farm chemicals
- Fluorescent light bulbs, compact fluorescent lamps and tubes
- Gas bottles
- Motor oil
- Paint*

* Household paint can be dropped at no charge at any Paintback location. For details see Paintback.com.au/find-location

For information on where to dispose of the above products, contact your local council.



Bairnsdale Event

To register for this event, simply scan the QR code or visit sustainability.vic.gov.au/detoxyourhome

You can also call 1300 363 744.

Events are held at locations around Victoria.



EGCMA Community Boat Tours



Join the East Gippsland Catchment Management Authority on one of our boat tours.

Staff will be on board to talk about current projects, bushfire recovery and answer any of your questions.

<p>Tour 1: Thursday 8 December Nicho River Mouth to Mitchell River Mouth Tour 9.30am to 12.30pm Departing Nicholson River Jetty</p>	<p>Tour 2: Thursday 8 December Mitchell River Tour 2.00pm to 5.00pm Departing Paynesville Cruiser Club Jetty</p>	<p>Tour 3: Friday 9 December Tambo River Twilight Tour 5.30pm to 8.30pm Departing Johnsonville Jetty</p>
--	---	---

Spaces are limited and registration is essential
 Light refreshments provided

To Register see EventBrite's Website - each tour listed separately

For further information contact
reception@egcma.com.au



4 Day Course Natural Sequence Farming by Stuart Andrews

You will learn to.

1. Read the landscape
2. Rehydrate the landscape
3. Fully utilise your farm's natural resources
4. Locate, design and build landscape structures
5. Redesign your own property
6. Begin improving landscape function on your own farm
7. Lower your farm costs and boost profits

Date: 17th to 20th April 2023

Venue: Woodcote, Bengworden
 Full Cost: \$2,700 per person
 Subsidised Cost: \$1,900 per person

*need to be a TopSoils or Landcare member to qualify for the \$800 subsidy

if interested in attending please contact Emma Orgill

emma.orgill@fevl.org.au / 0400 467 921



This project is supported by East Gippsland Catchment Management Authority, through funding from the Australian Government's National Landcare Program.

Bruthen - Bairnsdale Bus Timetable Dysons Bus Lines Ph: 5152 1711

Bruthen to Bairnsdale Morning	Monday & Friday AM	Tues, Wed, Thurs AM
Bruthen (opp) General Store	08:10 am	09:50 am
Bairnsdale, Corner Main & Bailey St	08:30 am	10:20 am
Bairnsdale Train Station	08:35 am	10:30 am
Bairnsdale to Bruthen Afternoon	Mon to Thurs PM	Friday PM
Bairnsdale Train Station	1:25 pm	3:40 pm
Corner Chemist (Service & Main Street)	1:30 pm	3:45 pm
Bruthen, Station & Great Alpine Rd	2:00 pm	4:15 pm

Mobile Library December



M	T	W	T	F	S	S
			1	2	3	4
5	6	7	8	9	10	11
12	13	14	15	16	17	18
19	20	21	22	23	24	25
26	27	28	29	30	31	

Wed	<p>Tambo Upper** (near school) 9.00 am – 9.45 am</p> <p>Bruthen (Main Street) 10.00 am – 11.15 am</p> <p>Nowa Nowa (Mingling Waters C/park) 1.30 pm – 2.00 pm</p>
Thu	<p>Bruthen** (near kinder) 10.45 am – 11.15 am</p>

*Sites marked ** are not visited during school holidays*

Phone 51524225 or 1300 555 886
www.eastgippsland.vic.gov.au



OPEN: Mondays & Wednesdays from 8.00am to 12 midday

GP Clinic: Wednesday by appointment only. Call 5155 8300 and select option '1'. Please make sure you let our Customer Service team know you would like your appointment in Bruthen.

Community Health Nurse: Monday and Wednesday, \$12 per consult or \$6 concession. Note: services will not be denied if you are unable to pay. Call 5155 8300 and select option '1'.

Maternal & Child Health: Once a month on a Tuesday by appointment only. Call 5155 8300 and select option '4'.

Room & Bus Hire: all bookings are to be directed to our Customer Service team on 5155 8300.

Pathology collection: Monday and Wednesday from 8.00 to 11.00am. Nurse fees apply.

These services are for Bruthen and district residents. For more information about GLCH, our services and programs, please visit glch.org.au or find us on social media.



Group meetings
3rd Wednesday of the month
@ 7 pm

Bruthen & District
Neighbourhood House

New members welcome

For details contact
landcare.bruthen@gmail.com

EVENTS & NOTICES

Injured Wildlife Rescue

When you find injured wildlife please keep these details in case of emergency:

WILDLIFE SHELTERS

Jade Whittingham

Wombat Wisdom, (Bairnsdale), 0473 446 161

Holly Corbett

Holly's Wildlife Rescue (No bats) (530 Bairnsdale Dargo Rd Hillside 3875), 0432 539 408

Suzie

Waterholes Wildlife Shelter Clifton Creek Koala specialist, 0447 470 905.

Geoff Nicol

Treehouse Wildlife Refuge Metung, 0419 345 820
Birds, wombats, kangaroos, etc

Increased patronage is needed for the class to continue, so please think about trying it out. Any enquiries please call 0439 812 166.

Community Lunch

Did you know that the Bruthen and District Neighbourhood House provides free, freshly cooked meals, consisting of a main course and dessert, each Friday?

Lunch is served from 11:45 to 12:30. (House closes at 1pm)

These Friday get-togethers are relaxed and friendly Everyone is welcome. Please let the crew at Neighbourhood House know if you're coming. 03 4141 5302 or info.bdnh@aussiebb.com.au

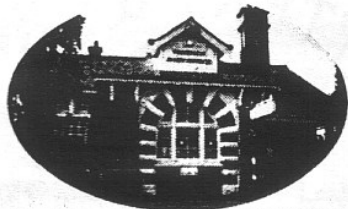
Tai Chi

For all those people wanting to spring in to summer, Tai Chi is a series of gentle movements to encourage flexibility and mindfulness. Yes, the space is heated, and classes are on Mondays from 10.30 to 11.30am in the Bruthen Mechanics Hall.

BRUTHEN LICENSED POST OFFICE

(Est.1893)

East
Link Toll
Passes



Photocopying
And
Facsimile
Service

**CBA, NAB, WestPac Banking,
Western Union Money Transfer,
Bill Payments, Post Bill Pay, Stationery,
Greeting Cards, Wrapping Paper, PostPak
& Australia Post Postal Services**

Howard & Jenny Young, Phone/Fax (03) 5157 5209

Election Matters

In last month's Victorian Election Tim Bull (Nationals) was re-elected to the seat of Gippsland with a convincing 63.37% of the primary vote.

Here in Bruthen a total of 481 votes were cast and distributed as such.

Tim Bull (Nationals)	283
Carl John Fechner (Family First)	9
Stephen Richardson (Labor)	68
Ricky Muir (Shooters Fishers & Farmers)	25
Nissa Ling (Greens)	50
Sally Court (Animal Justice)	2
Ed Barnes (Freedom Party)	13
Informal	31
Total	481

Votes in the Upper House for the Gippsland Region are still being counted at the time of publication.

In event of an emergency

Bruthen has 3 Heart Start Defibrillators

Located at

Bruthen General Store
6.30am – 6.15/7.15pm (7 days)

Bruthen Rec Reserve
for sports events / Caravan Park

Bruthen Police Station

Note: under 24/7 video surveillance



Darren Chester

Putting Locals First

#lovegippsland



NATIONALS for Gippsland

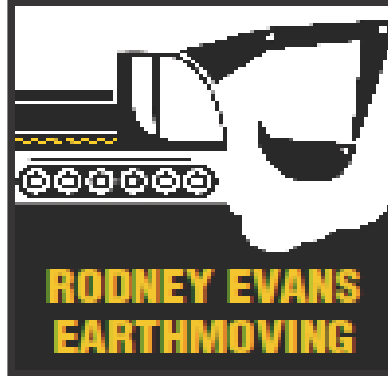
www.darrenchester.com.au

TRADES AND SERVICES

ALMON

ENGINEERING SERVICES
122 Omeo Highway Bruthen
Turning And Milling
Welding Aluminum & Steel
Cylinder Head Repair

Phone Andrew 5157-5486



12 Tonne
Excavator

Log Grab
Compaction Wheel
Augers

Phone Rodney
0403 671 896

RODNEY EVANS
EARTHMOVING

Chris Fella

Qualified Carpenter
Renovations, Decks Pergolas, New
Houses, Fencing
20 Year Experience

TFN 195 357 871

MB. 0412 9912 60 PH. 5157 5198

E. chrisfella@bigpond.com

ACG

KITCHENS & CABINETS

Adam & Carly Greenwood
Email – info@acgkitchens.com.au
Phone – 0402 137 148
Tambo Upper

Bruthen Electrical

ALL ELECTRICAL NEEDS

Data, Phone, Security Alarms

Craig Prior

Ph 5157 5104

0417 318 363

R.E.C. 16896

RIVIERA GAS SERVICES

Peter Weeks

Specialising in Gas Installations

Conversion and Maintenance

General Plumbing

Lic No 21065 Mobile: 0418 516 745



BP Bruthen

'Personal service with a smile'

UNDER NEW MANAGEMENT

OPEN 7 DAYS A
WEEK
6AM—7PM

70 Main Street, Bruthen
Ph: 5157 5262
bruthenstation@gmail.com

Bruthen Garden Supplies

NOW OFFERING WATER CARTAGE

- 13,000L WATER CARTAGE.
- DOMESTIC & GENERAL 7 DAYS

Tip-trucks 6m³ & 10m³, Bobcat, Excavator,
Post Hole Boring, Trenching, Slashing.
SUPPLIERS OF SAND, SOIL & MULCH



WE NOW SELL CHOOK PELLETS

ALL AREAS



76 Main St, Bruthen
M: 0429 944 297



C13151

TAMBO RAMBLER

Update on local Wildlife

Tambo Rambler Advertising Costs

BLACK AND WHITE Advert Options

- ⇒ 9 x 5 cm - **Cost \$10.00**
- ⇒ 9 x 8 cm - **Cost \$15.00**
- ⇒ 1/4 page - **Cost \$25.00**
- ⇒ 1/2 page - **Cost \$50.00**
- ⇒ Full page - **Cost \$100.00**

25% discount for BDCA Members,
(only applies to black and white adverts)

COLOUR Advert Option 1: Full Page

- ⇒ One full page, full colour feature / advert placed on the inside cover of the Tambo Rambler
- ⇒ Plus acknowledgement as the major sponsor for that month's edition of the Tambo Rambler
- ⇒ **Cost - \$165 per edition**

COLOUR Advert Option 2: Half Page

- ⇒ One half page, full colour feature / advert placed on the inside cover of the Tambo Rambler
- ⇒ Plus acknowledgement as the sponsor for that month's edition of the Tambo Rambler
- ⇒ **Cost - \$100 per edition**

COLOUR Advert Option 3: Quarter Page Full Colour Promotional Package

- ⇒ One quarter page, full colour feature / advert placed on the inside cover of the Tambo Rambler
- ⇒ Plus acknowledgement as the co-sponsor for that month's edition of the Tambo Rambler
- ⇒ **Cost - \$65 per edition**

Closing date for January issue is Dec 25.

Please send your articles by e-mail only to:
tamboramblerr@gmail.com
(Word, Publisher, JPG or PNG format with photos please
PDF format will no longer be accepted.)

Tambo Rambler is distributed across East Gippsland via email and on the web page at
<https://bruthendistrict.org.au/tambo-rambler/>

We also distribute to Government representatives, Bairnsdale Library, Victorian State Library, and local Historical Societies
Hard copies are available in Bruthen at the P.O, General Store, Oppe Shoppe, Bakery, Blue Bee, Hotel and Neighbourhood House for a gold coin donation.

The Tambo Rambler Committee and BDCA do not take responsibility for opinions expressed by contributors to the Tambo Rambler. The Editors reserve the right to reject articles and advertisements and to edit submissions if necessary

All submissions must carry the author's full name, address and phone number. They may be published anonymously if preferred.

In recent editions of the Tambo Rambler we have published articles highlighting our precious wildlife and their precarious existence.

We have become aware of a particular problem that has been occurring in Bruthen recently.

Numerous galahs have been rescued in locations adjacent to the Main Street, all of which have wounds consistent with being shot. Some have survived in specialised care, but others have had to be euthanised. Evidence is now mounting that they have been shot with a slingshot firing marbles at the birds while they are feeding.

This abhorrent practice is to be deplored as all native wildlife, including birds, are protected by law and there are heavy fines and possible jail sentences for wildlife cruelty.

Galahs are protected as are other parrots and Australia has the largest number of parrot species of any country in the world.

Galahs mate for life and share the nesting and parenting between both sexes.

They are commonly seen in pairs but also in large flocks and have quite complex social lives. They grieve on the loss of a mate or chick. This is particularly relevant as they can live for 30+ years in the wild.

Galahs do not need to have supplementary feeding by humans as they have a very wide diet from grasses, nuts, fruit, vegetables and insects.

Feeding by people can bring out the worst in galahs as they can become dependent and excessively territorial.

Galahs are the jokers of the bird world and to see them at play doing somersaults on wires and flying upside down is a joy to behold.

To think that a person could shoot such a beautiful animal is a shameful tragedy.

If you have any information that would lead to the prosecution of the offenders, please contact the local police or Crime Stoppers 1800 333 000.

Bruthen Seniors with their Christmas breakup lunch at the Bruthen Bowls Club



